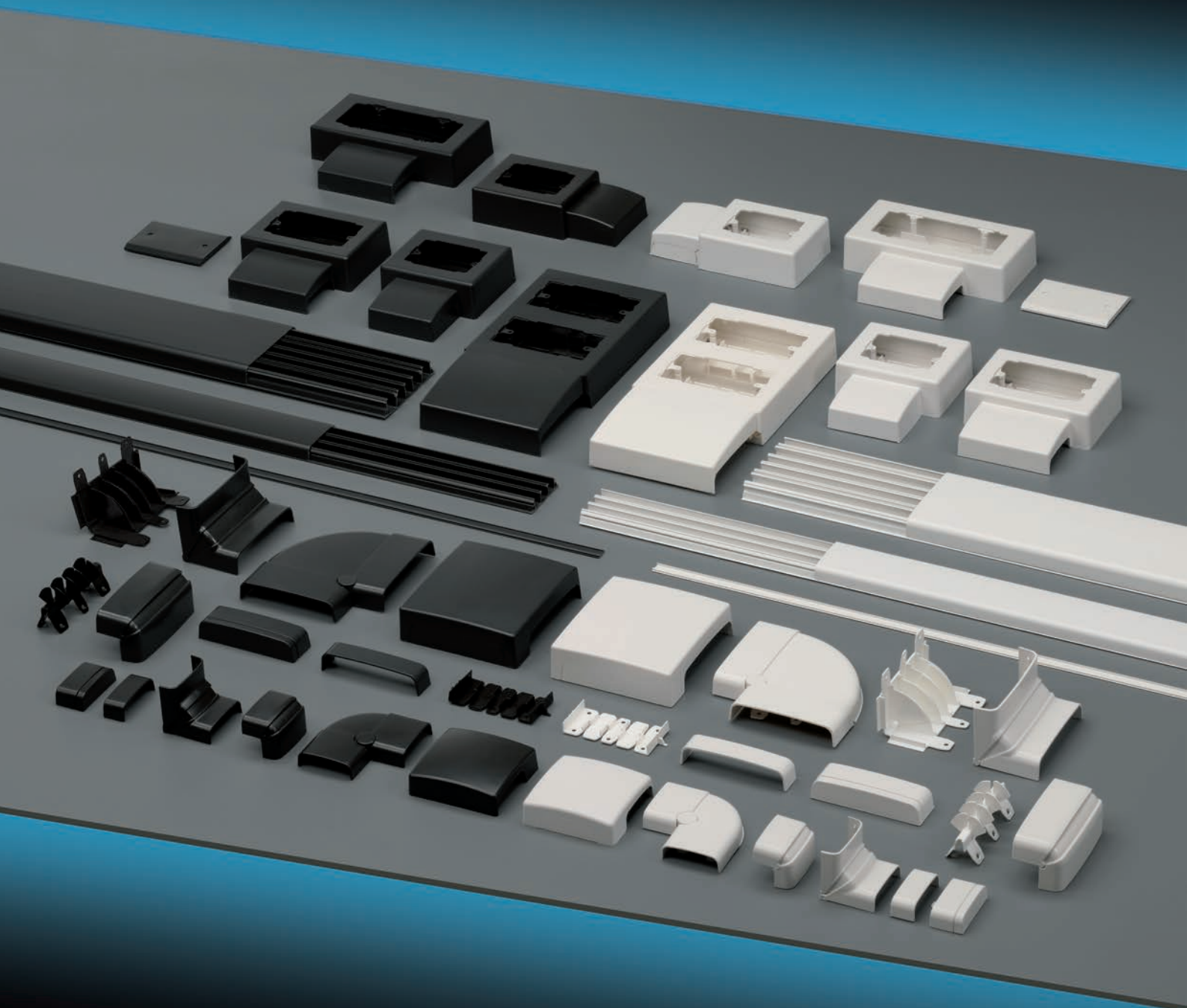


# SKIRTING BOARD AND WALL TRUNKING SYSTEM



## MAIN TECHNICAL FEATURES

Skirting board and wall trunking system with 3 or 5 compartments.

External dimensions: 70x20 or 130x28 mm.

Material: technopolymer on rigid PVC base, self-extinguishing V0 (UL94) and high resistant to UV rays.

Standard colours: white RAL 9001 and slate grey RAL 7021.

System protection degree: IP40.

Resistance to mechanical shocks IK 08 (shocks up to a 5 J).

Resistance to heat in continuous use: up to +70° C.

Resistance to abnormal heat: up to 650° C (Glow Wire Test, Reference Standard IEC 60695-2-11).

Insulation resistance > 100 MΩ. Dielectric voltage > 3.000 V~.

Application temperature: minimum -5° C, maximum +60° C.

Cover removal: by a proper tool only.

Perfectly integrating with the whole range of trunkings Series MC e MCA.

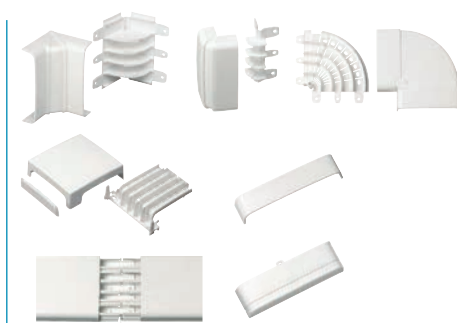
Reference standards: EN 50085-1, EN 50085-2-1.

Products meeting the essential requirements of L.V.D. 2014/35/UE.

Products in compliance with RoHS II - 2011/65/UE directive.



Skirting board and wall trunking 70x20 and 130x28 Series 20 SIMPLY System - MAXI System  
page 18



Accessories for trunking 70x20 and 130x28 Series 20 SIMPLY System - MAXI System  
page 19



Fittings for trunking 70x20 and 130x28 Series 20 SIMPLY System - MAXI System  
page 22

## MAIN TECHNICAL FEATURES

Perfectly symmetric trunking base: there isn't any top or bottom to pay attention to during the installation



Perforated bottom for a quicker and more precise installation

Wrap-around cover without edges; functional modern design



3 or 5 inner compartments for any distribution need

Cover is supplied with a transparent protective film



Wide inner space:  
3 compartments: 202 mm<sup>2</sup>  
5 compartments: 696 mm<sup>2</sup>

Compartment lid prevents the cables from falling out during the installation

Separate compartments preventing the wires of different circuits from getting mixed

The skirting board and wall trunkings Series 20 are available in 2 sizes: SIMPLY System 70x20mm with 3 compartments and MAXI System 130x28mm with 5 compartments; the two dimensions are complementary and can be combined together by specific couplings, with the great advantage of using the best dimension for any installation need.

They are made of technopolymer on rigid self-extinguishing PVC base and can be supplied in two

different colours, white RAL 9001 and slate-grey RAL 7021; they are characterized by the perfect symmetry of the inner compartments, they can be easily installed both on the wall and as skirting board along the doors.

Each compartment is big enough to allow the installer to put a considerable number of cables, fitting for the requested use.

The perfectly separated compartments permit to put, in the same trucking, the wires of

different electric circuits: power, phone, data transmission and other, without any risk of interferences or inappropriate overlapping, according to the Standard CEI 64-8.

The modern design cover without edges perfectly fits into the environment and can be removed only by a proper tool, in order to prevent from accidental opening. It is supplied with a protective plastic film preventing it from getting damaged during the transport or the installation.

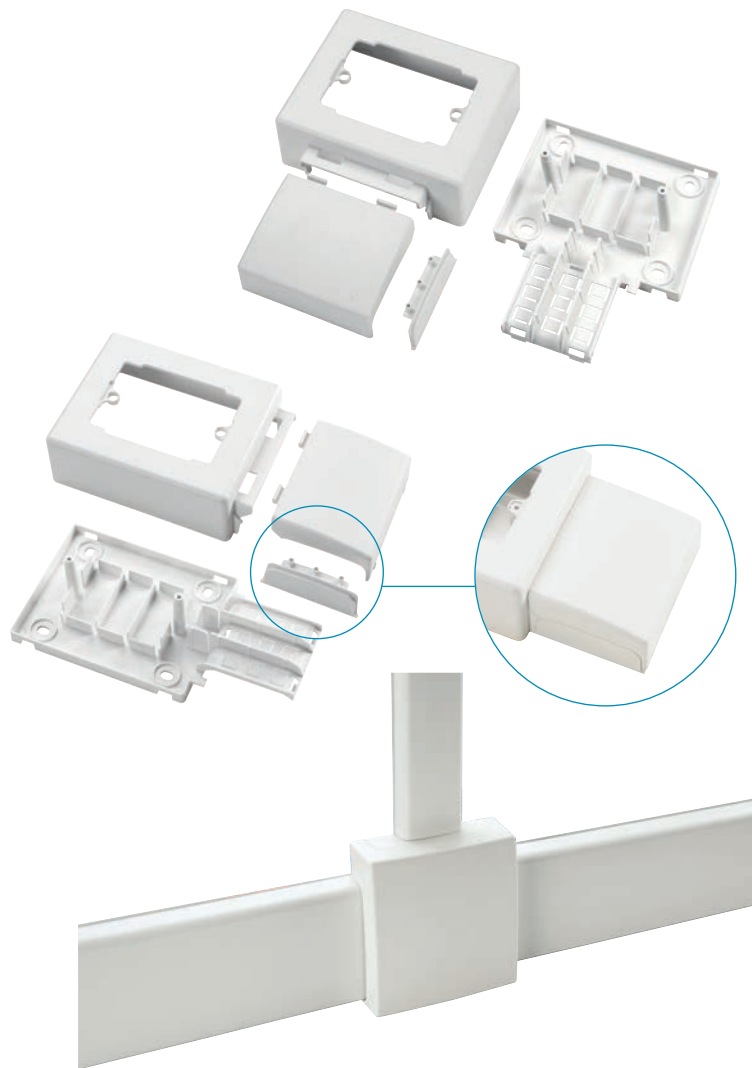
## MAIN TECHNICAL FEATURES

Tower and wall boxes for dimension 70x20

The boxes can be used with the trunking both passing through and stopping into the box

The boxes and the components of the system can be assembled by snap joints without using any screws

The smoothed design of the Series 20 perfectly fits in with any environment



Thanks to the exclusive ending system of the trunking which stops into the box there is no need for additional end caps

The boxes are big and deep enough to contain the modern domotic devices

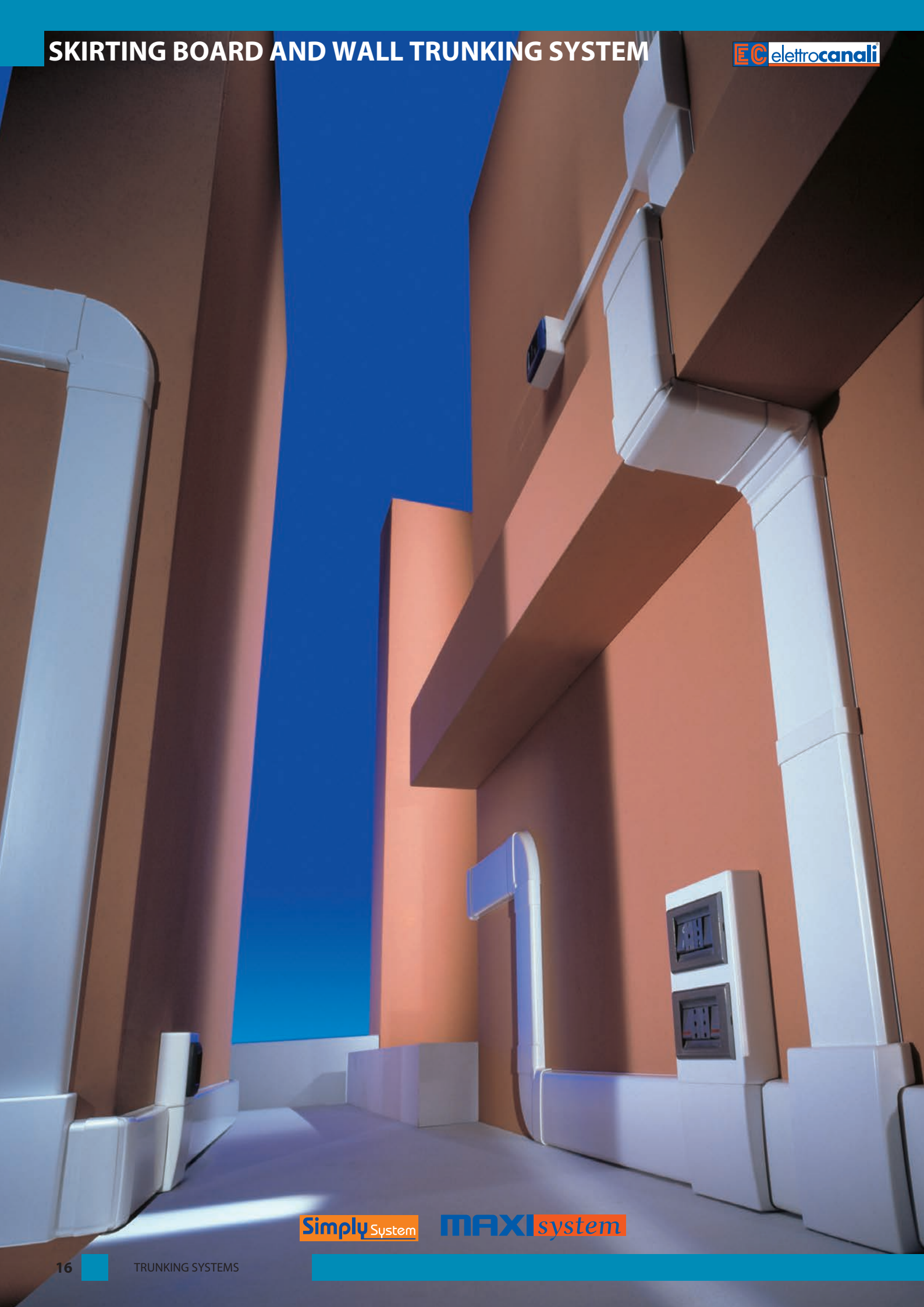
The end cap can be perfectly put into the joining cover

It is possible to join the two different sizes of the skirting board trunking by the derivation box EC20209/EC20309

From today it is no longer necessary to terminate the trunking track by the usual cap: the tower and wall boxes for the skirting board and wall trunking Simply System in the dimension 70x20mm have an integrated closing system which also allows to interrupt the trunking. That particular solution makes undoubtedly save time and money: in a single operation you can install the box and end the

trunking, all you need to mount the box is contained in the box package. Then there is no need to use further accessories like the end cap. Thanks to the perfectly symmetric trunking base (there isn't any top or bottom to pay attention to during the installation) the trunking track can be terminated indifferently on the right or on the left; in this

way it isn't necessary to have two different mirror caps as with the asymmetric trunkings. The device tower boxes, with the special channel termination system in the box, are available in different sizes for 3, 4 and 6 devices for the skirting board trunkings sizes 70x20 and 130x28, while the biggest skirting board trunking also has a tower box suitable for 8 devices.



Simply System

MAXI system

## mounting examples



## SKIRTING BOARD AND WALL TRUNKING SERIES 20

### MAIN TECHNICAL FEATURES:

- Made of self-extinguishing technopolymer on rigid PVC base.
- Perforated bottom for an easier installation.
- 3 or 5 mirror inner compartments.
- Wrap-around cover removable only by a proper tool.
- Standard length: 2mt-long bars.
- Cover supplied with a transparent protective film.
- Supplied in strong cardboard boxes to make both the transport and the storage easier.
- The first compartment near the floor can be used only for telecommunication circuits.

CE

WHITE RAL 9001

IP40

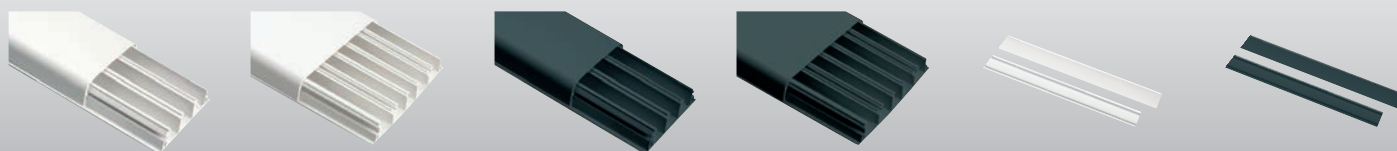
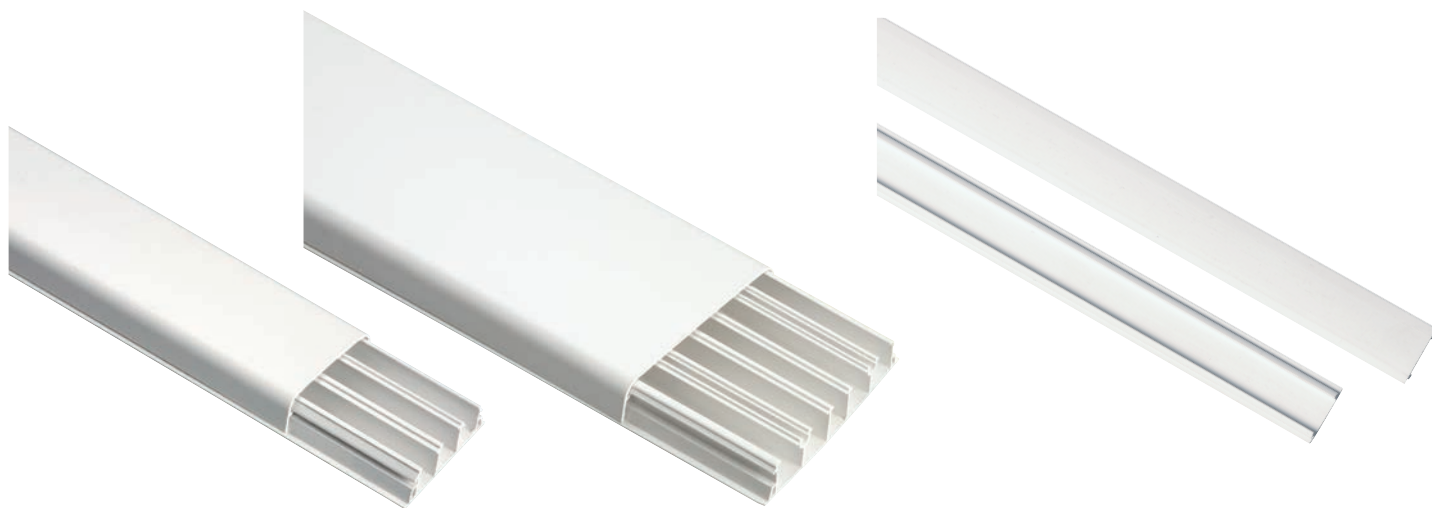
SLATE GREY RAL 7021

## Skirting board and wall trunking

ITEM	EXTERNAL DIMENSIONS W x H mm	COMPARTMENTS	COLOUR	PACKAGING m
EC20001	70x20	3	WHITE	24
EC20101	70x20	3	SLATE GREY	24
EC20201	130x28	5	WHITE	20
EC20301	130x28	5	SLATE GREY	20

## Compartment lid

ITEM	PROFILE WIDTH mm	COLOUR	PACKAGING m
EC20202	17	WHITE	100
EC20302	17	SLATE GREY	100



EC20001

EC20201

EC20101

EC20301

EC20202

EC20302

Simply System

MAXI system

## ACCESSORIES SERIES 20

### MAIN TECHNICAL FEATURES:

- They are composed of a flexible internal part, easy to install by screws and permitting the full isolation and separation of the cables in their compartments, and of a rigid cover with a variable angle which can be set directly on the trunking with a simple click.
- Since it is installed in places exposed to accidental hits, the external angle has rounded edges without in order to increase the impact surface..
- **Internal angle:** variable from 70° to 110°.
- **External angle:** variable from 60° to 120°.



**IP40**

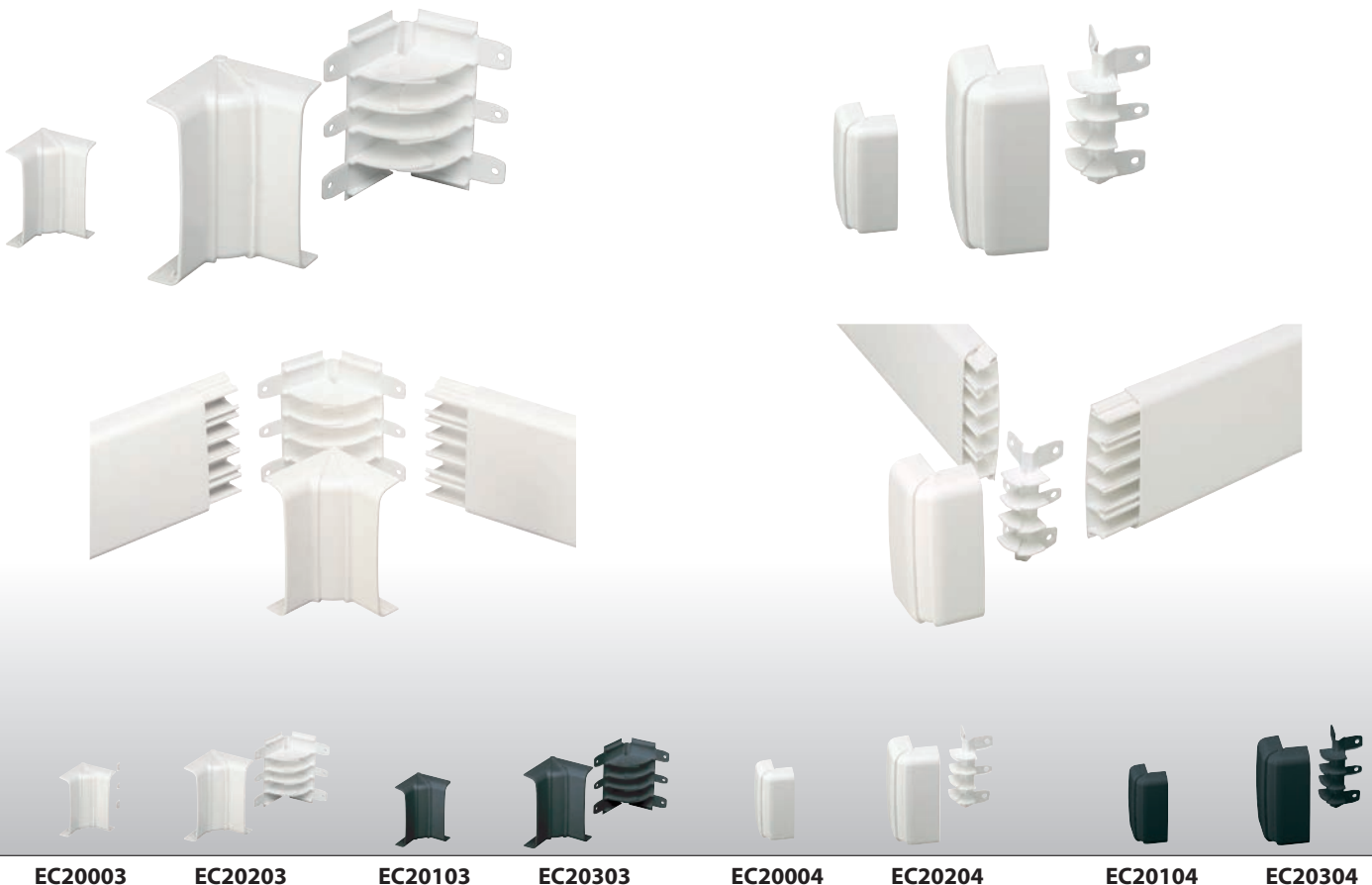


### Variable internal angle

ITEM	EXTERNAL DIMENSIONS W x H mm	COLOUR	PACKAGING PIECES
<b>EC20003</b>	70x20	WHITE	5/25
<b>EC20103</b>	70x20	SLATE GREY	5/25
<b>EC20203</b>	130x28	WHITE	5
<b>EC20303</b>	130x28	SLATE GREY	5

### Variable external angle

ITEM	EXTERNAL DIMENSIONS W x H mm	COLOUR	PACKAGING PIECES
<b>EC20004</b>	70x20	WHITE	5/25
<b>EC20104</b>	70x20	SLATE GREY	5/25
<b>EC20204</b>	130x28	WHITE	5
<b>EC20304</b>	130x28	SLATE GREY	5





## ACCESSORIES SERIES 20

### MAIN TECHNICAL FEATURES:

- **The variable flat angle** joins two straight trunking tracks installed on the same level with an intersection angle varying from 90° to 170°. It is composed by a lower part which can be sectioned according to the needed angle width and is to be fixed to the trunking by screws, and by a modular cover to be put on the trunking. Small hooks allow the angle to remain set to the trunking although in case of strong strikes.
- **The 3-way junction box** is absolutely necessary to get T-derivations from the straight trunking track. The inner pre-cutting, shaped for different dimensions, makes the installation easier and permits, besides a perfect design, to keep IP protection degree.

It is also used for derivations perpendicular to the trunking level or to join the floor trunking.

The internal grid, fixed to the wall by screws and to the trunking by a click, prevents from any contact or overlapping of the cables. For the reduction from 130x28 to 70x20 trunking use: EC20209 or EC20309.



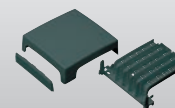
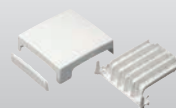
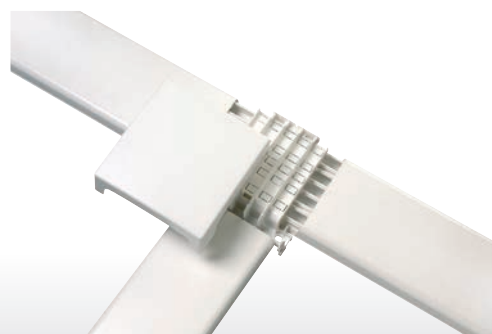
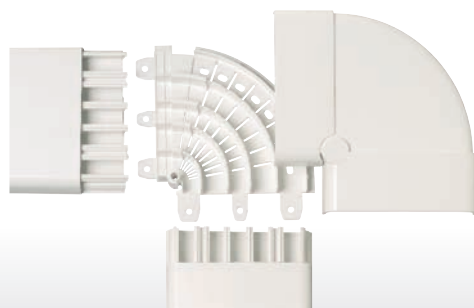
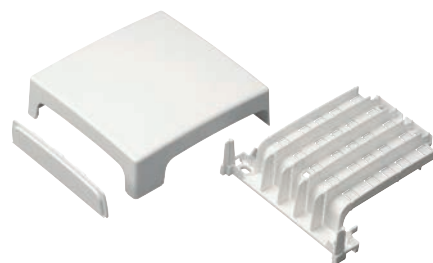
**IP40**

### Variable flat angle

ITEM	EXTERNAL DIMENSIONS W x H mm	COLOUR	PACKAGING PIECES
EC20005	70x20	WHITE	1/10
EC20105	70x20	SLATE GREY	1/10
EC20205	130x28	WHITE	1/5
EC20305	130x28	SLATE GREY	1/5

### 3-way junction box

ITEM	EXTERNAL DIMENSIONS W x H mm	COLOUR	PACKAGING PIECES
EC20009	70x20	WHITE	1/5
EC20109	70x20	SLATE GREY	1/5
EC20209	130x28	WHITE	1/5
EC20309	130x28	SLATE GREY	1/5



EC20005 EC20205

EC20105 EC20305

EC20009 EC20209

EC20109 EC20309

Simply System

MAXI system

## ACCESSORIES SERIES 20

### MAIN TECHNICAL FEATURES:

- **Bottom straight joint:** can be easily fixed to the trunking bottom by screws; installed inside the trunking it assures the perfect lining and the continuity of the internal compartments.
- **Cover straight joint:** can be used to cover the contact point of two covers, permits to keep the protection degree IP40 and gives the whole a nice design without any interruptions. The special hooking system to the trunking bottom assures a very good hold in case of a casual hit. .
- **End cap:** entirely closes the trunkings and avoids accessing the internal compartments.

WHITE RAL 9001

**IP40**

SLATE GREY RAL 7021

### Cover straight joint

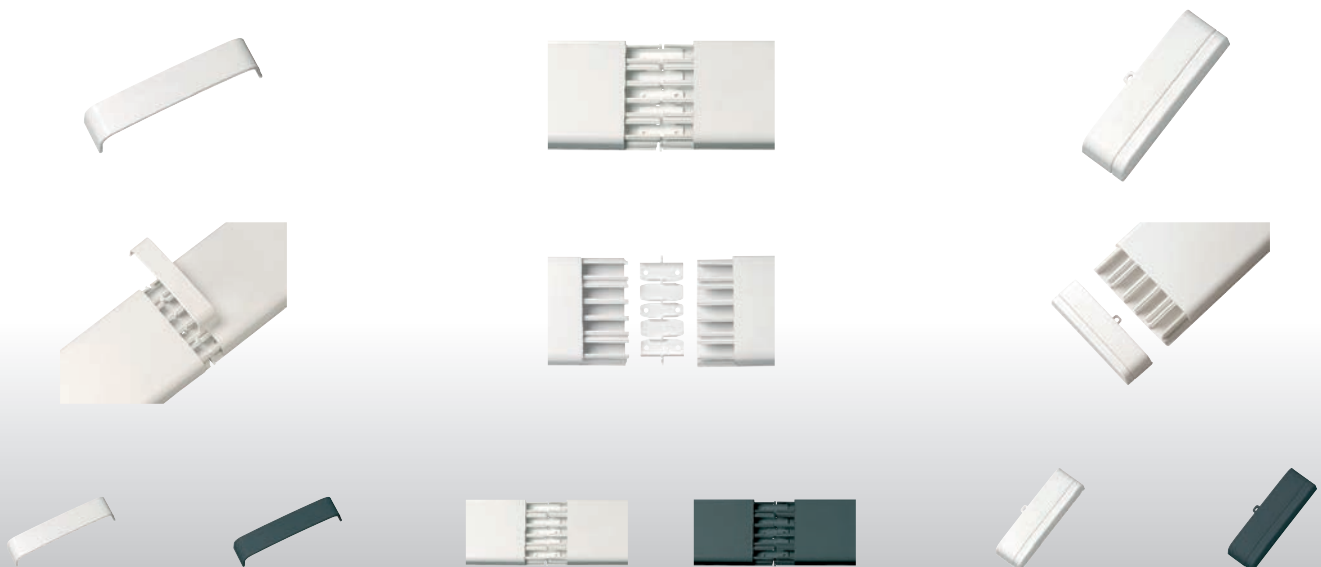
ITEM	EXTERNAL DIMENSIONS W x H mm	COLOUR	PACKAGING PIECES
EC20006	70x20	WHITE	5/25
EC20106	70x20	SLATE GREY	5/25
EC20206	130x28	WHITE	5/20
EC20306	130x28	SLATE GREY	5/20

### Bottom straight joint

ITEM	EXTERNAL DIMENSIONS W x H mm	COLOUR	PACKAGING PIECES
EC20207	130x28	WHITE	5/20
EC20307	130x28	SLATE GREY	5/20

### End cap

ITEM	EXTERNAL DIMENSIONS W x H mm	COLOUR	PACKAGING PIECES
EC20008	70x20	WHITE	5/25
EC20108	70x20	SLATE GREY	5/25
EC20208	130x28	WHITE	5/20
EC20308	130x28	SLATE GREY	5/20



EC20006 EC20206

EC20106 EC20306

EC20207

EC20307

EC20008 EC20208

EC20108 EC20308

## ACCESSORIES SERIES 20

### MAIN TECHNICAL FEATURES:

- The device box hole centre distance 83,5mm – 3 modules – can be used to install the electrical devices, up to 3 Italian standard devices. with the blank cover it can be employed as derivation box.
- This item is composed of 4 parts:
- the bottom, to be fixed to the trunking with a simple click and to the wall by 4 screws; it also serves insulating base and grid keeping the different electrical circuits separated.
- the upper part properly shaped to house the device frames.
- the trunking covering piece which not only has a protective function but also gives the whole box an elegant harmonic design.
- the integrated end cap permits to interrupt the trunking without using an additional end cap.

CE

WHITE RAL 9001

IP40

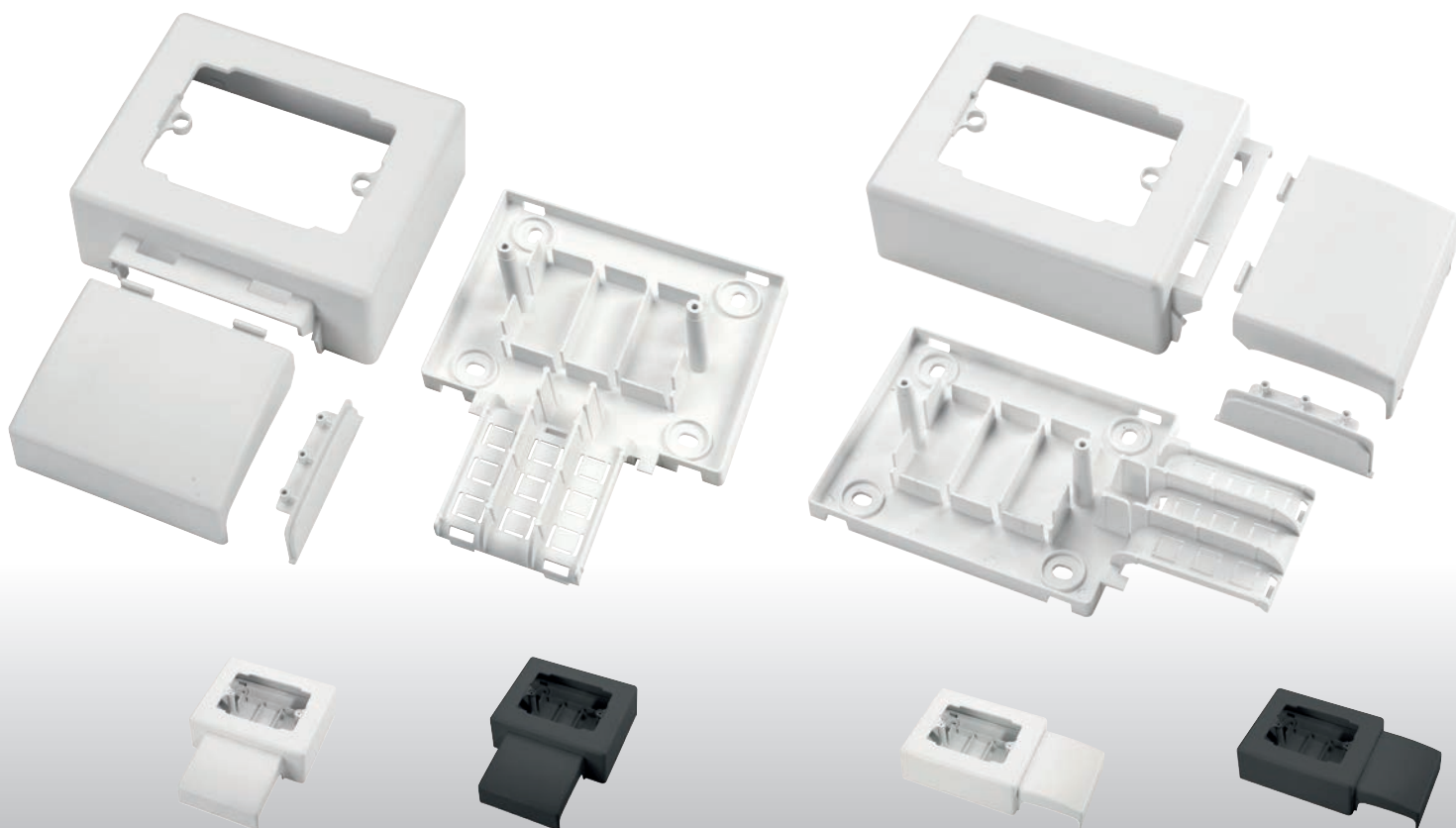
SLATE GREY RAL 7021

## Tower device box – hole centre distance 83,5 mm – 3 modules – trunking 70x20

ITEM	TRUNKING	DIMENSIONS W x H x D mm	COLOUR	PACKAGING PIECES
EC20010	70x20	140x185x50	WHITE	1/10
EC20110	70x20	140x185x50	SLATE GREY	1/10

## Wall device box – hole centre distance 83,5 mm – 3 modules – trunking 70x20

ITEM	TRUNKING	DIMENSIONS W x H x D mm	COLOUR	PACKAGING PIECES
EC20011	70x20	212x112x50	WHITE	1/10
EC20111	70x20	212x112x50	SLATE GREY	1/10



EC20010

EC20110

EC20011

EC20111

Simply System

## ACCESSORIES SERIES 20

### MAIN TECHNICAL FEATURES:

- **The device boxes hole centre distance 108,5-100 mm – 4 or 6 modules** - can be used to install the electrical devices, up to 4-6 Italian standard devices or 2-3 multistandard sockets. It is possible to install any device thanks to the big inner volume.
- This items are composed of 3 parts:
  - the bottom, to be fixed to the trunking with a simple click and to the wall by 4 screws; it also serves insulating base and grid keeping the different electrical circuits separated.
  - the upper part properly shaped to house the device frames.
  - the trunking covering piece which not only has a protective function but also gives the whole box an elegant harmonic design.

CE

WHITE RAL 9001

IP40

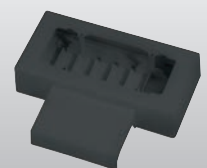
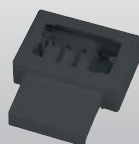
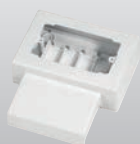
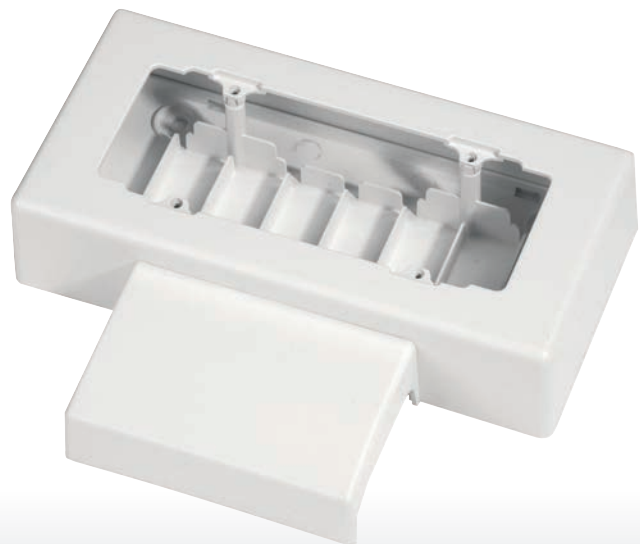
SLATE GREY RAL 7021

## Tower device box – hole centre distance 108,5 mm – 4 modules – trunking 70x20

ITEM	TRUNKING	DIMENSIONS W x H x D mm	COLOUR	PACKAGING PIECES
EC20015	70x20	165x185x50	WHITE	1/10
EC20115	70x20	165x185x50	SLATE GREY	1/10

## Tower device box – hole centre distance 100 mm – 6 modules – trunking 70x20

ITEM	TRUNKING	DIMENSIONS W x H x D mm	COLOUR	PACKAGING PIECES
EC20016	70x20	225x185x50	WHITE	1/8
EC20116	70x20	225x185x50	SLATE GREY	1/8



EC20015

EC20115

EC20016

EC20116

## ACCESSORIES SERIES 20

### MAIN TECHNICAL FEATURES:

- **The device boxes hole centre distance 83,5-108,5 mm** – 3, 4 or 6 modules - can be used to install the electrical devices, from 3 to 8 Italian standard devices or 2, 3 or 4 multistandard sockets. It is possible to install any device thanks to the big inner volume.
- In a 8-module box (2x4-module rows), 1 row (only 1) can be changed into a 3-module row by using the accessories supplied with the box. This items are composed of 3 parts:
  - the bottom, to be fixed to the trunking with a simple click and to the wall by 4 screws; it also serves insulating base and grid keeping the different electrical circuits separated.
  - the upper part properly shaped to house the device frames.
  - the trunking covering piece which not only has a protective function but also gives the whole box an elegant harmonic design.



**IP40**



### Tower device box – hole centre distance 83,5 mm – 3 modules – trunking 130x28

ITEM	TRUNKING	DIMENSIONS W x H x D mm	COLOUR	PACKAGING PIECES
<b>EC20210</b>	130x28	140x230x50	WHITE	1/6
<b>EC20310</b>	130x28	140x230x50	SLATE GREY	1/6

### Tower device box – hole centre distance 108,5 mm – 4 modules – trunking 130x28

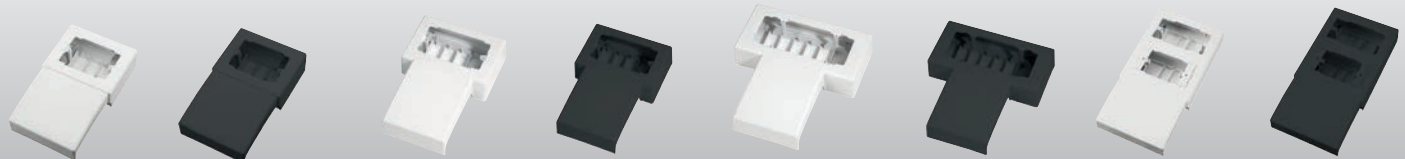
ITEM	TRUNKING	DIMENSIONS W x H x D mm	COLOUR	PACKAGING PIECES
<b>EC20215</b>	130x28	165x240x50	WHITE	1/10
<b>EC20315</b>			SLATE GREY	

### Tower box – hole centre distance 100 mm – 6 modules – trunking 130x28

ITEM	TRUNKING	DIMENSIONS W x H x D mm	COLOUR	PACKAGING PIECES
<b>EC20216</b>	130x28	225x240x50	WHITE	1/10
<b>EC20316</b>	130x28	165x240x50	SLATE GREY	1/10

### Tower box – hole centre distance 108,5 mm – 8 modules – trunking 130x28

ITEM	TRUNKING	DIMENSIONS W x H x D mm	COLOUR	PACKAGING PIECES
<b>EC20211</b>	130x28	170x340x50	WHITE	1/4
<b>EC20311</b>	130x28	170x340x50	SLATE GREY	1/4



EC20210

EC20310

EC20215

EC20315

EC20216

EC20316

EC20211

EC20311

## ACCESSORIES SERIES 20

### MAIN TECHNICAL FEATURES:

- **Box lids.**
- The lid can be used to temporarily close the installed 3-4-6 module boxes, to make the boxes serve as derivation/junction boxes or to have them ready for a future use.
- Screws included in the box.

CE

WHITE RAL 9001

IP40

SLATE GREY RAL 7021

### 3-module box cover – hole centre distance 83,5 mm – with screws

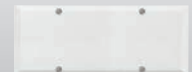
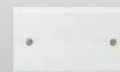
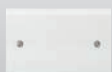
ITEM	DIMENSIONS W x H x D mm	COLOUR	PACKAGING PIECES
EC20212	117x80x5	WHITE	1/50
EC20312	117x80x5	SLATE GREY	1/50

### 4-module box cover – hole centre distance 108,5 mm – with screws

ITEM	DIMENSIONS W x H x D mm	COLOUR	PACKAGING PIECES
EC20213	136x80x5	WHITE	1/50

### 6-module box cover – hole centre distance 100 mm – with screws

ITEM	DIMENSIONS W x H x D mm	COLOUR	PACKAGING PIECES
EC20214	203x80x5	WHITE	1/50



EC20212

EC20312

EC20213

EC20214



## CHOICE TABLE FOR SKIRTING BOARD AND WALL TRUNKING SERIES 20

DIMENSION 70x20 mm - 3 COMPARTMENTS

COLOUR	TRUNKING AND COVER	COMPARTMENT LID	VARIABLE INTERNAL ANGLE	VARIABLE EXTERNAL ANGLE	VARIABLE FLAT ANGLE	STRAIGHT JOINT	END CAP
WHITE	EC20001	EC20202	EC20003	EC20004	EC20005	EC20006	EC20008
SLATE GREY	EC20101	EC20302	EC20103	EC20104	EC20105	EC20106	EC20108

COLOUR	3-WAY JUNCTION BOX	3-MODULE TOWER DEVICE BOX	3-MODULE WALL DEVICE BOX	4-MODULE TOWER DEVICE BOX	6-MODULE TOWER DEVICE BOX	3-MODULE BOX LID	4-MODULE BOX LID	6-MODULE BOX LID
WHITE	EC20009	EC20010	EC20011	EC20015	EC20016	EC20212	EC20213	EC20214
SLATE GREY	EC20109	EC20110	EC20111	EC20115	EC20116	EC20312		

## MAXIMUM CABLE CAPACITY – DIMENSION 70x20 mm 3 COMPARTMENTS

	COMPARTMENT	SECTION COMPARTMENT mm <sup>2</sup>	CABLE 1,5 mm <sup>2</sup> N°	CABLE 2,5 mm <sup>2</sup> N°	CABLE 4 mm <sup>2</sup> N°	CABLE 6 mm <sup>2</sup> N°
	A	223	16	10	8	4
	B	250	18	11	9	5
	C	223	16	10	8	4

Cable H07V-K. Max cable size which can be installed is 14mm. If electrical circuits are installed the reference Standard CEI 64/8 provides that the trunking can be filled max up to 50% of its capacity. The first compartment near the floor is to be used only for telecommunication networks. The skirting board trunkings are supplied in the standard length of 2 mt ± 5 mm.

COLOUR	TRUNKING AND COVER	COMPARTMENT LID	VARIABLE INTERNAL ANGLE	VARIABLE EXTERNAL ANGLE	VARIABLE FLAT ANGLE	STRAIGHT JOINT	BOTTOM STRAIGHT JOINT	END CAP	
	WHITE	EC20201	EC20202	EC20203	EC20204	EC20205	EC20206	EC20207	EC20208
	SLATE GREY	EC20301	EC20302	EC20303	EC20304	EC20305	EC20306	EC20307	EC20308

COLOUR	3-WAY JUNCTION BOX	3-MODULE TOWER DEVICE BOX	4-MODULE TOWER DEVICE BOX	6-MODULE TOWER DEVICE BOX	8-MODULE TOWER DEVICE BOX	3-MODULE BOX LID	4-MODULE BOX LID	6-MODULE BOX LID	
	WHITE	EC20209	EC20210	EC20215	EC20216	EC20211	EC20212	EC20213	EC20214
	SLATE GREY	EC20309	EC20310	EC20315	EC20316	EC20311	EC20312		

## MAXIMUM CABLE CAPACITY – DIMENSION 130x28 mm 5 COMPARTMENTS

	COMPARTMENT	SECTION COMPARTMENT mm <sup>2</sup>	CABLE 1,5 mm <sup>2</sup> N°	CABLE 2,5 mm <sup>2</sup> N°	CABLE 4 mm <sup>2</sup> N°	CABLE 6 mm <sup>2</sup> N°
	A	408	30	19	15	8
	B	418	31	21	16	9
	C	360	27	18	13	8
	D	418	31	21	16	9
	E	408	30	19	15	8

Cable H07V-K. Max cable size which can be installed is 14mm. If electrical circuits are installed the reference Standard CEI 64/8 provides that the trunking can be filled max up to 50% of its capacity. The first compartment near the floor is to be used only for telecommunication networks. The skirting board trunkings are supplied in the standard length of 2 mt ± 5 mm.