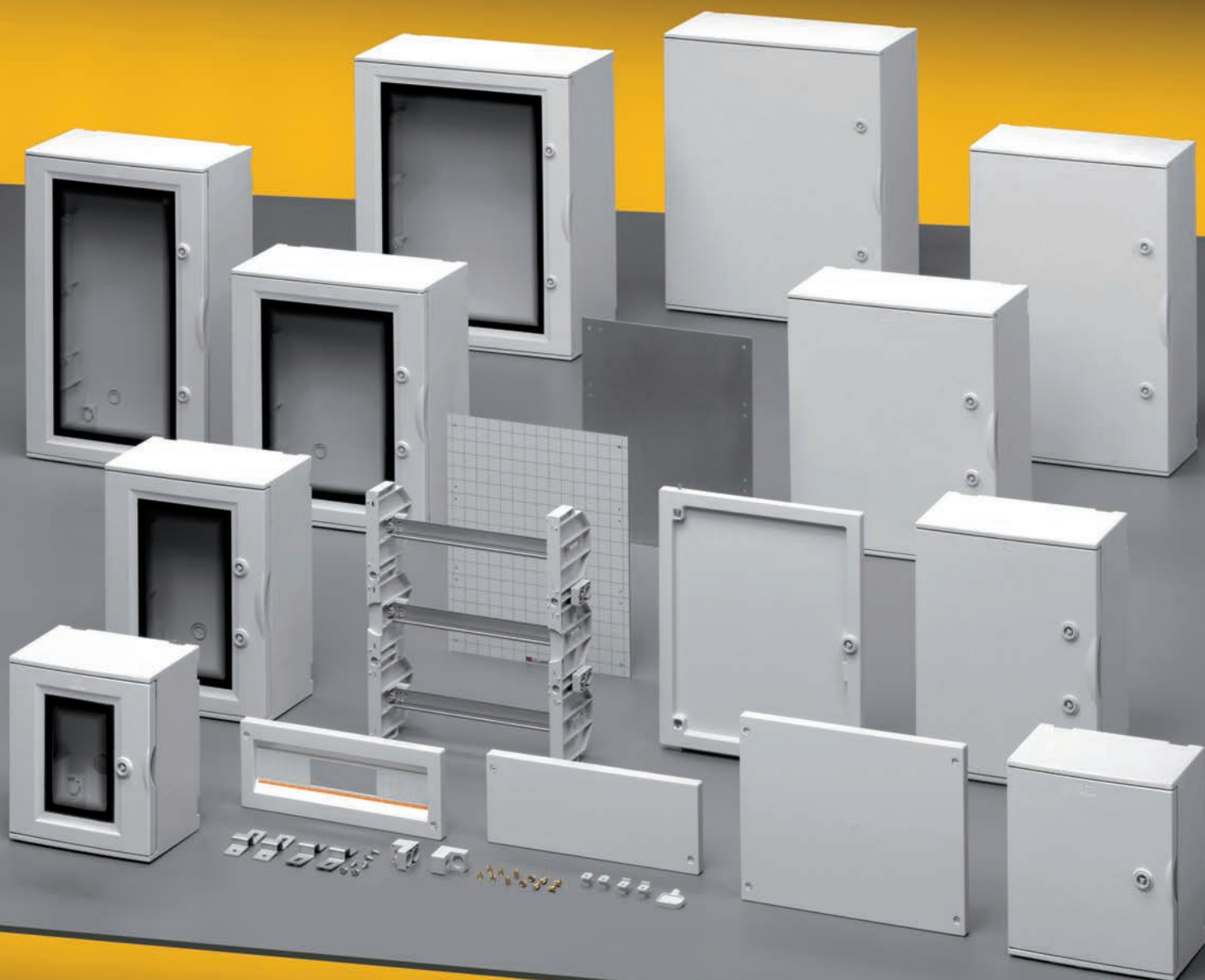



mounting examples



SURFACE MOUNTING POLYESTER BOARDS



MAIN TECHNICAL FEATURES

Material: made of halogen free reinforced fiberglass polyester, self-extinguishing HB degree to UL94.
 High resistant to UV rays.
 Standard colours: grey RAL 7035.
 Resistance to mechanical shocks IK 10 (schocks up to a 20 J), reference standard EN 62262.
 Resistance to abnormal heat (Glow Wire Test according to IEC 60695-2-11 standard)- board with blank door up to 960° C - board with transparent window up to 650° C.
 Application temperature: minimum -25°, maximum +70°.
 IP65 protection degree.
 Nominal application voltage 1000VAC, 1500VDC, suitable far photovoltaic plants.
 Double insulation. 
 Possibility to mount 48-75mm high switches or 102mm high switches starting from the board with dimensions 435x505x215.
 Right or left reversible door with stainless steel pins - it can be opened at 180°.
 Power loss in compliance with Standard EN 60670-24.
 Reference Standards: EN 60670-1, EN 60670-24, EN 60439.
 Products meeting the essential requirements of L.V.D. 2014/35/UE.
 Products in compliance with RoHS II - 2011/65/UE directive.



IP65 polyester boards - blank door page 234



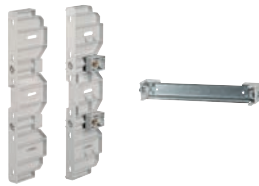
IP65 polyester boards - transparent window page 234



Polyester counterdoor, metal back plate and insulating back plate page 234



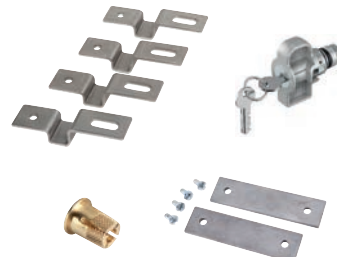
Cover module with window and blank page 234



Up rights for panels module and rails DIN page 234



Assembly accessories for polyester boards page 234



MAIN TECHNICAL FEATURES

Blank or with window door, opening angle greater than 180°

Counter-door with ergonomic handle and triangular key

Accessories fixing through brass expansion inserts

Bottom of the boards in one piece



Galvanized or stainless steel fixing brackets

Plain and smooth headboard for easy opening and conduit inlet

Door and counter-door are hinged with rapid fixing through stainless steel spring pins

Counter door can be installed at two different heights

Metal or insulation back plates, can be placed at different heights

Screw cover caps to keep IP-protection and double insulation

ELETTROCANALI presents the new range of distribution boards QUBESYSTEM series, made of monobloc polyester reinforced with 25% glass fiber, thermosetting, heat-resistant, UV-resistant, self-extinguishing HB according to UL94 standard and halogen-free, in gray color 7035.

The peculiar characteristic of the new polyester panels is the high resistance to corrosion and air pollution, which make them particularly suitable for installation in outdoor, industrial and process environments such

as, for example, in tourist ports, washing, construction sites, chemical factories, paper mills, food, petrochemical, telecommunications, energy, photovoltaics, railways, etc., etc. The IP65 protection rating and the double insulation system guarantee the protection of the installed equipment, while the high impact resistance (IK10 grade) ensures the necessary strength for outdoor and industrial applications.

Available in two versions with a blank door or with a transparent

window, the boards are fitted with reversible doors that can be opened at an angle of more than 180 ° to flush with the wall to avoid creating an obstacle or danger once opened and for easy wiring in the workshop. The doors are also easily separable from the bottom, to be subsequently installed more easily.

The closure is made with a triangular insert with the supplied key, but which can be replaced by the kit with a coded safety key when the installation conditions require it.

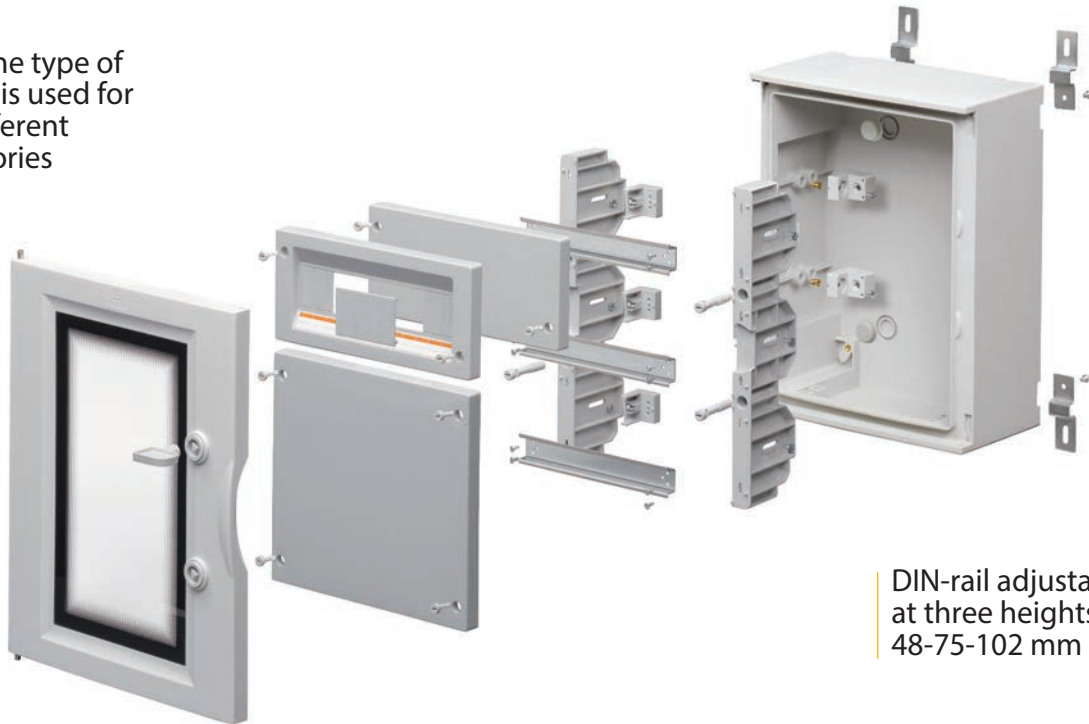
MAIN TECHNICAL FEATURES

Modular blank plate

Distance between the DIN rails:
36 modules: 125 mm
54/72/96/140 modules: 150 mm

Accessories fixing through brass expansion inserts

Only one type of screws is used for the different accessories



DIN-rail adjustable at three heights:
48-75-102 mm

Impact and UV resistant polycarbonate window

Single/double blank panels

Fixing of the panels through a 1/4 turn screws

Modular frame to wire in the workshop with the uprights, the DIN rails and panels

The boards have an installation temperature between -25 ° C and + 70 ° C, while the temperature resistance of the material ranges from -40 ° C to + 110 ° C.

6 sizes are available, from the smallest of 270x305x170 mm up to the largest measuring 620x810x320 mm. All accessories can be equipped with the installation accessories for the realization of the different configurations: starting from the bottom plates, metal or insulating, which can be installed directly on the bottom or adjusted on different heights, to the internal counterdoors, also they are made in polyester,

hinged on two different heights for maximum flexibility in installation of non-modular equipment and control or signaling elements.

The counterdoors are equipped with quick-locking, reversible metal pins, with a comfortable ergonomic handle and a triangle lock supplied.

The installation of switches is realized through the modular frame complete with DIN rails, which is designed to be wired in workshop and subsequently inserted into the panel in place, to speed up the wiring and

maintenance operations. Possibility to install switches with standard heights of 48, 75 and 102 mm.

The frame is completed by the choice of panels that allow the installation of a minimum of 36 modules up to a maximum of 140 modules. Blank panels with single and double module modules are also available, with which the combinations most suited to the distribution or automation system installed in the boards are realized.

Do not miss the support brackets galvanized or stainless steel and pole support.

MAIN TECHNICAL FEATURES



Through galvanized or stainless steel brackets, bolted to the proper fixed inserts, with the maintenance of IP-protection degree and double insulation



The brackets can be put horizontally or vertically according to the needs. Through threaded rods M6 for the mounting on different supports (for instance pole support)



The door has an opening angle greater than 180° so that it remains against the wall and doesn't create any obstacle or danger



The door can be hinged with either left or right opening. In order to change the opening release the stainless steel pin spring



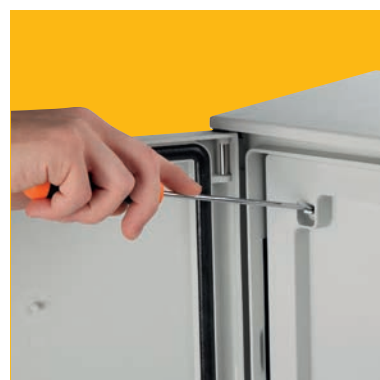
The back plates can be installed in the lowest part simply by fastening them to the fixed inserts through M6 screws



Back plates can be placed at different heights by the proper adjusting kit



The counter-doors are characterized by a rapid fixing through stainless steel spring pins, equipped with ergonomic handle and standard lock system with triangular key



The counter-doors are mounted on the bushings and the lock pins which must be set in their proper seats at the bottom of the board

MAIN TECHNICAL FEATURES



The DIN rails, height 15 mm, are always supplied separately.
Distance between the DIN rails: 36 modules: 125 mm
54/72/96/140 modules: 150 mm



Mount the DIN rail and the support on the uprights at the desired height according to the installed devices, and fix everything by the proper screws



The modular frame can be composed with the number of guides required and positioned at different heights, easily wired in the workshop and later inserted into the board in place



It is also possible to install 25-40mm high slotted trunkings behind the frame to make the wiring easier



The frame is supported by the case and the installer can perform the wiring / maintenance with both hands free



The final fixing of the complete frame is made with insulating screws: maximum speed and ease of installation and maintenance



Single/double blank panels. Fixing of the panels through a 1/4 turn insulating screws



The frame installed in the highest position ensures the IP20 protection degree also with the open door

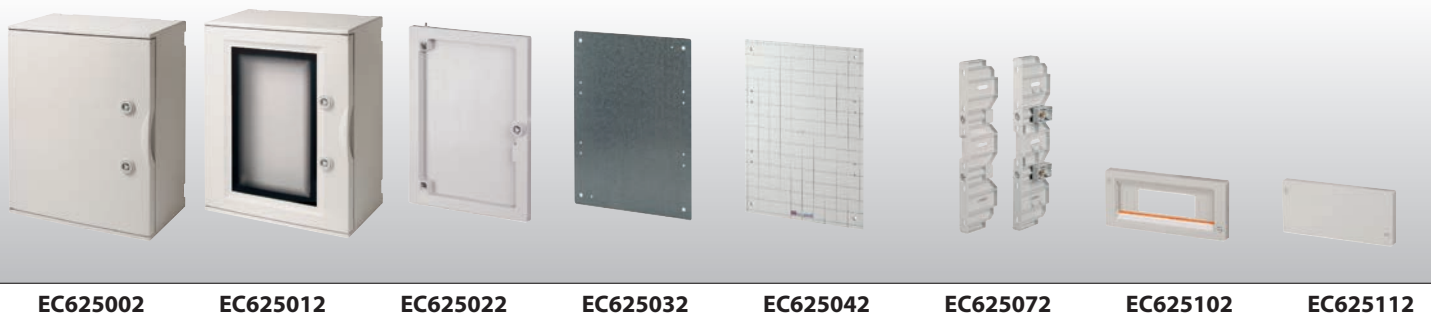
POLYESTER BOARDS

MAIN TECHNICAL FEATURES:

- Polyester thermosetting boards, self-extinguishing HB according to UL94 standard, Halogen Free, UV-resistant, high resistance to corrosion, pollution, and chemical.
- Blank or with window door, opening angle greater than 180°, UV-resistant.
- Resistance to mechanical shocks IK 10 (shocks up to a 20 J).
- Back plates are made up to metal or insulating material, removable frames with DIN rails.
- Counterdoor can be installed at two different heights, equipped with triangular key.
- One-Screw-System: only one type of screws is used for the different accessories in order to permit a simple and easy assembly.
- Power loss and dimensions: page 381.



Dimensions mm WxHxD Modules Distance mm	Polyester board blank door	Polyester board transparent window	Polyester Hinged counterdoor	Metal back plate (direct fixing on the bottom)	Insulating back plate (direct fixing on the bottom)	Pair of up rights	Cover module with window Without rail DIN)	Blank module cover	
PACKAGING	1 piece	1 piece	1 piece	1 piece	1 piece	1 pair	1 piece	1 piece	
I° 270x305x170	EC625001	EC625011	---	EC625031	EC625041	---	---	---	
II° 325x430x185 36M (3x12) 125 mm	EC625002	EC625012	EC625022	EC625032	EC625042	EC625072	EC625102 12 Modules	EC625112	
III° 435x505x215 54M (3x18) 150 mm	EC625003	EC625013	EC625023	EC625033	EC625043	EC625073	EC625103 18 Modules	EC625113	
IV° 435x655x215 72M (4x18) 150 mm	EC625004	EC625014	EC625024	EC625034	EC625044	EC625074	EC625103 18 Modules	EC625113	
V° 545x655x265 96M (4x24) 150 mm	EC625005	EC625015	EC625025	EC625035	EC625045	EC625074	EC625105 24 Modules	EC625115	
VI° 620x810x320 140M (5x28) 150 mm	EC625006	EC625016	EC625026	EC625036	EC625046	EC625076	EC625106 28 Modules	EC625116	



EC625002

EC625012

EC625022

EC625032

EC625042

EC625072

EC625102

EC625112



MAIN TECHNICAL FEATURES:

- Fixing center distance, overall dimensions, combinations of the various system accessories and distances between the various system elements, see page 381.
- The pair of uprights can be installed to fix the panels even without DIN rails.
- DIN rails must always be used with a pair of uprights.
- It is possible to install the bottom plates in the highest position, the uprights with the DIN rails and the counterdoors in the highest positions without panels.
- Depth adjustment of the counterdoors and bottom plates are independent and compatible.
- The keys are unified and open all locks.



IP65

GREY RAL 7035

Double blank cover module	DIN rail with supports	Deep adjustment back plate kit	Set of 4 steel brackets galvanized	Set of 4 stainless steel brackets	Modular blank plate (4,5 modules)	Safety lock with 2 keys	Spare brass inserts kit (10 pieces)	Joint kit
1 piece	1 piece	1 piece	1 kit	1 kit	25 pieces	1 kit	1 kit	1 kit
---	---	---	EC625SZ	EC625SI	---	EC625SC	---	EC625GI
EC625122	EC625132 12 Modules	EC625REG (2 kit x plate)	EC625SZ	EC625SI	EC600TC	EC625SC	EC625IO	EC625GI
EC625123	EC625133 18 Modules	EC625REG (2 kit x plate)	EC625SZ	EC625SI	EC600TC	EC625SC	EC625IO	EC625GI
EC625123	EC625133 18 Modules	EC625REG (3 kit x plate)	EC625SZ	EC625SI	EC600TC	EC625SC	EC625IO	EC625GI
EC625125	EC625135 24 Modules	EC625REG (3 kit x plate)	EC625SZ	EC625SI	EC600TC	EC600SC	EC625IO	EC625GI
EC625126	EC625136 28 Modules	EC625REG (4 kit x plate)	EC625SZ	EC625SI	EC600TC	EC600SC	EC625IO	EC625GI



EC625122



EC625132



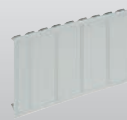
EC6250REG



EC625SZ



EC6250SI



EC600TC



EC625SC



EC625IO



EC625GI

SPARE DOORS AND ACCESSORIES

MAIN TECHNICAL FEATURES:

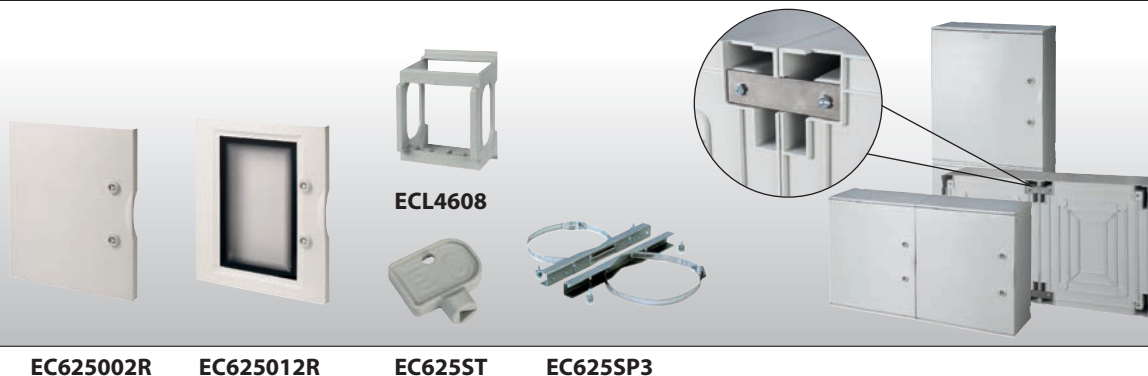
- Polyester thermosetting boards, self-extinguishing HB according to UL94 standard, Halogen Free, UV-resistant, high resistance to corrosion, pollution, and chemical.
- Blank or with window door, opening angle greater than 180°, UV-resistant.
- Resistance to mechanical shocks IK 10 (shocks up to a 20 J).
- Back plates are made up to metal or insulating material, removable frames with DIN rails.
- Pole support kit in galvanized steel and adjustable stainless steel band (length 1 mt), max load 100 Kg.
- One-Screw-System: only one type of screws is used for the different accessories in order to permit a simple and easy assembly.



IP65

GREY RAL 7035

Dimensions mm WxHxD Modules Distance mm	Polyester board blank door	Polyester board transparent window	Blank spare door	Transparent spare door	Triangular spare key	Pole support (ø max 25 cm)	DIN rail adapter for 2 «MyLIFE» devices
PACKAGING	1 piece	1 piece	1 piece	1 piece	10 pieces	1 piece	40 pieces
I° 270x305x170	EC625001	EC625011	EC625001R	EC625011R	EC625ST	EC625SP1	---
II° 325x430x185 36M (3x12) 125 mm	EC625002	EC625012	EC625002R	EC625012R	EC6250ST	EC625SP1	ECL4608
III° 435x505x215 54M (3x18) 150 mm	EC625003	EC625013	EC625003R	EC625013R	EC6250ST	EC625SP3	ECL4608
IV° 435x655x215 72M (4x18) 150 mm	EC625004	EC625014	EC625004R	EC625014R	EC6250ST	EC625SP3	ECL4608
V° 545x655x265 96M (4x24) 150 mm	EC625005	EC625015	EC625005R	EC625015R	EC6250ST	EC625SP5	ECL4608
VI° 620x810x320 140M (5x28) 150 mm	EC625006	EC625016	EC625006R	EC625016R	EC6250ST	EC625SP5	ECL4608



To get boards larger than 620x810 mm, you can put two or more boards with the same base or height together by using the joining kit EC625GI and the connecting devices series EC625XX.

