

# DISTRIBUTION BOARDS



panel system

board system

2

## MAIN TECHNICAL FEATURES

Material: made of halogen free and shock resistant technopolymer on ABS base with resistance to UV rays.

Standard colour: grey RAL 7035.

Resistance to mechanical shocks IK 08 - IK 10 (shocks up to 6-20 J).

Resistance to abnormal heat: up to 650° C (Glow Wire Test, Reference Standard IEC 60695-2-11).

Installation temperature range: minimum -15° C, maximum +60° C.

Smoked scratch-proof doors with safety key.

Door can be blocked while opened to easily access to the switches.

Galvanized steel mounting DIN rail Suitable for installation of MCB and RCD protection devices from 48 to 75 mm depth.

90° openable hinged door with holding position device to make maintenance operations easier.

Pre-cuts for conduit or cable inlet of different sizes.

Screw caps for double insulation included.

Power loss in compliance with Standard EN 60670-24.

Reference Standards: EN 60670, EN 50102.

Products meeting the essential requirements of L.V.D. 2014/35/UE.

Products in compliance with RoHS II - 2011/65/UE directive.



Blank, pre-cut or flanged empty distribution boards for EN 60309 sockets  
page 164



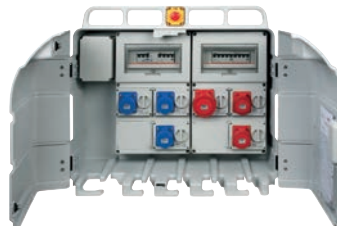
Assembled distribution boards DBO type, wall fixed installation  
page 172



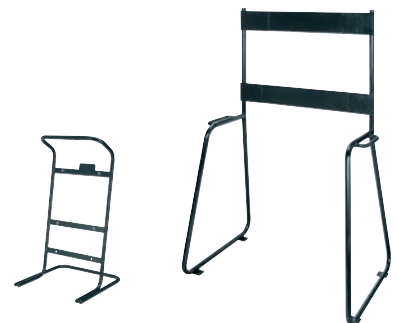
Assembled distribution boards ASC type, mobile installation  
page 179



Construction site empty distribution boards  
page 194



Construction site assembled distribution boards, mobile installation  
page 195

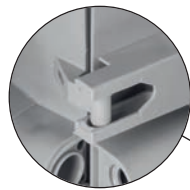


Metallic support for distribution boards and construction site distribution boards  
page 191/204

board system

## MAIN TECHNICAL FEATURES

The 8, 12 and 19 modules boards are equipped with internal hinges to support the lid during wiring operations



Possibility to mount 48-75 mm high modules

Snap-on scratch-proof door with a triangle safety key

Self-adhesive circuit labels

Flanged version for sockets with fixing hole centre distance 60x60 mm

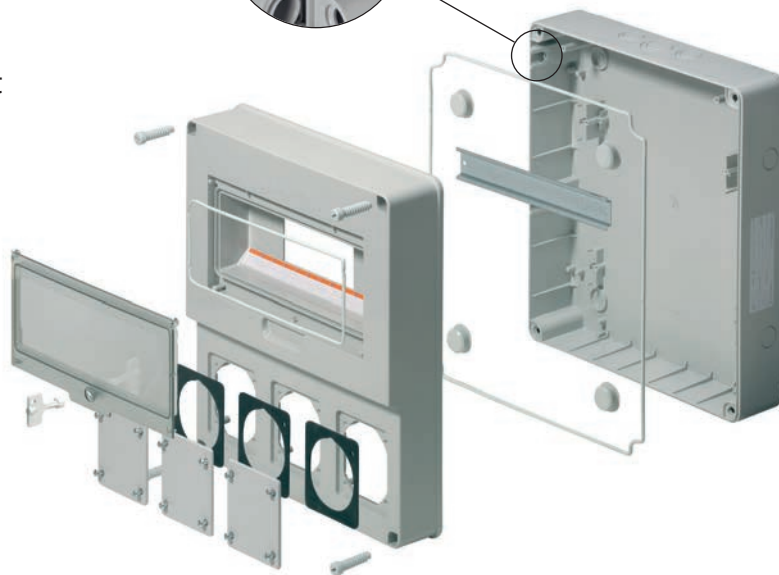
Wall fixing bracket plastic to keep IP-protection and double insulation

Blank plate for unused switches

Screw caps to gain double insulation

Cable inlet through IP55 plastic stepped glands, IP44/IP65/IP67 conduit fittings and IP68 cable glands

Protection degree IP65: suitable for heavy uses



The distribution boards "Board System Series 690" are characterized by being very strong so they can be safely used for temporary installations such as construction sites, markets, fairs, etc.

They are entirely made up of UV-resistant halogen-free technopolymer on ABS-base, they are particularly suitable for outdoor use, thanks to the high impact resistance. The distribution boards, with

accessories, fit different use configurations: fixed on a wall, movable with a handle or on a metal support.

Each dimension of the distribution boards Series 690 is available in 3 different versions: BLANK - fully closed board with inner reticular structure to mount sockets or other equipments by self-tapping screws.

PRE-CUT - board with standard holes to mount industrial sockets

EN 60309 type of any brand and model up to 32A and inner reticular structure for a fixing by self-tapping screws.

FLANGED - board suitable to house our 16A industrial sockets or sockets with mounting flange with screw hole centre distance 60x60 mm.

The flanged boards allow the housing of our interlocked sockets: vertical, horizontal, with or without fuse holder.



## DISTRIBUTION BOARD SERIES 690

### MAIN TECHNICAL FEATURES:

- Distribution boards completely made of shock resistant technopolymer on ABS base.
- Protection degree IP65 with closed door.
- Galvanized steel mounted DIN rail, fixed to the bottom and adjustable in depth.
- Pre-cuts for conduit or cable inlet of different sizes.
- Screw caps for double insulation included.
- Reference Standards: EN 60670-1, EN 60670-24.
- Single package in strong cardboard boxes suitable for transport and storage.
- Blank flanges with screws and gaskets included.

IP65

GREY RAL 7035

## Distribution boards for 2 vertical sockets - 4 modules

ITEM	TYPE	EXTERNAL DIMENSIONS W x H x D mm	POWER LOSS (Watt) EN 60670-24	PACKAGING PIECES
<b>EC69001</b>	BLANK	105x337x95	9	1/15
<b>EC69011</b>	PRE-CUT	105x337x95	9	1/15
* <b>EC69021</b>	FLANGED	105x337x95	9	1/15

## Distribution boards for 3 vertical sockets - 4 modules

ITEM	TYPE	EXTERNAL DIMENSIONS W x H x D mm	POWER LOSS (Watt) EN 60670-24	PACKAGING PIECES
<b>EC69002</b>	BLANK	105x430x95	9	1/13
<b>EC69012</b>	PRE-CUT	105x430x95	9	1/13
* <b>EC69022</b>	FLANGED	105x430x95	9	1/13

\*Flanged version for ELETTROCANALI 16A sockets and similar with 60x60 mm hole centre distance



EC69001

EC69011

EC69021

EC69002

EC69012

EC69022

## DISTRIBUTION BOARD SERIES 690

### MAIN TECHNICAL FEATURES:

- Distribution boards completely made of shock resistant technopolymer on ABS base.
- Protection degree IP65 with closed door.
- 90° openable hinged door with holding position device to make maintenance operations easier.
- Galvanized steel mounted DIN rail, fixed to the bottom and adjustable in depth.
- Pre-cuts for conduit or cable inlet of different sizes.
- Screw caps for double insulation included.
- Reference Standards: EN 60670-1, EN 60670-24.
- Single package in strong cardboard boxes suitable for transport and storage.
- Blank flanges with screws and gaskets included.

CE



IP65



GREY RAL 7035

## Distribution boards for 4 sockets - 8 modules

ITEM	TYPE	EXTERNAL DIMENSIONS W x H x D mm	POWER LOSS (Watt) EN 60670-24	PACKAGING PIECES
<b>EC69003</b>	BLANK	200x430x95	13	1
<b>EC69013</b>	PRE-CUT	200x430x95	13	1
* <b>EC69023</b>	FLANGED	200x430x95	13	1

\*Flanged version for ELETTROCANTALI 16A sockets and similar with 60x60 mm hole centre distance



EC69003

EC69013

EC69023



## DISTRIBUTION BOARD SERIES 690

### MAIN TECHNICAL FEATURES:

- Distribution boards completely made of shock resistant technopolymer on ABS base.
- Protection degree IP65 with closed door.
- 90° openable hinged door with holding position device to make maintenance operations easier.
- Galvanized steel mounted DIN rail, fixed to the bottom and adjustable in depth.
- Pre-cuts for conduit or cable inlet of different sizes.
- Screw caps for double insulation included.
- Reference Standards: EN 60670-1, EN 60670-24.
- Single package in strong cardboard boxes suitable for transport and storage.
- Blank flanges with screws and gaskets included. (except 69045).

CE

IP65

GREY RAL 7035

## Distribution boards for 3 horizontal sockets - 12 modules

ITEM	TYPE	EXTERNAL DIMENSIONS W x H x D mm	POWER LOSS (Watt) EN 60670-24	PACKAGING PIECES
<b>EC69004</b>	BLANK	320x360x135	24	1
<b>EC69014</b>	PRE-CUT	320x360x135	24	1
* <b>EC69024</b>	FLANGED	320x360x135	24	1
<b>EC69034</b>	FLANGED FOR 2 INTERLOCKED HORIZONTAL SOCKETS 16/32A WITHOUT FUSE HOLDER	320x360x135	24	1

## Distribution boards for 6 sockets - 12 modules

ITEM	TYPE	EXTERNAL DIMENSIONS W x H x D mm	POWER LOSS (Watt) EN 60670-24	PACKAGING PIECES
<b>EC69005</b>	BLANK	320x510x135	24	1
<b>EC69015</b>	PRE-CUT	320x510x135	24	1
* <b>EC69025</b>	FLANGED	320x510x135	24	1
<b>EC69035</b>	FLANGED FOR 4 INTERLOCKED HORIZONTAL SOCKETS 16/32A WITHOUT FUSE HOLDER	320x510x135	24	1
<b>EC69045</b>	FLANGED FOR 2 INTERLOCKED VERTICAL SOCKETS 16/32/63A	320x510x135	24	1

\*Flanged version for ELETTRICANALI 16A sockets and similar with 60x60 mm hole centre distance



EC69004

EC69014

EC69024

EC69034

EC69005

EC69015

EC69025

EC69035

EC69045

board system

## DISTRIBUTION BOARD SERIES 690

### MAIN TECHNICAL FEATURES:

- Distribution boards completely made of shock resistant technopolymer on ABS base.
- Protection degree IP65 with closed door.
- 90° openable hinged door with holding position device to make maintenance operations easier.
- Galvanized steel mounted DIN rail, fixed to the bottom and adjustable in depth.
- Pre-cuts for conduit or cable inlet of different sizes.
- Screw caps for double insulation included.
- Reference Standards: EN 60670-1, EN 60670-24.
- Single package in strong cardboard boxes suitable for transport and storage.
- Blank flanges with screws and gaskets included. (only 69026).

GREY RAL 7035

## Distribution boards for 8 sockets - 19 modules

ITEM	TYPE	EXTERNAL DIMENSIONS W x H x D mm	POWER LOSS (Watt) EN 60670-24	PACKAGING PIECES
<b>EC69006</b>	BLANK	400x525x135	30	1
<b>EC69016</b>	PRE-CUT	400x525x135	30	1
* <b>EC69026</b>	FLANGED	400x525x135	30	1
<b>EC69036</b>	FLANGED FOR 4 INTERLOCKED HORIZONTAL SOCKETS 16/32A WITH FUSE HOLDER	400x525x135	30	1
<b>EC69046</b>	FLANGED FOR 3 INTERLOCKED VERTICAL SOCKETS 16/32/63A	400x525x135	30	1

\*Flanged version for ELETTROCANTALI 16A sockets and similar with 60x60 mm hole centre distance



EC69006



EC69016



EC69026



EC69036



EC69046





## ACCESSORIES FOR DISTRIBUTION BOARDS **SERIES 690**

### MAIN TECHNICAL FEATURES:

- Material: shock resistant technopolymer on ABS base for flanges.
- Material: rigid 6.6 Nylon for handles and connecting devices.
- Material : made of shock resistant technopolymer on PC base, resistance to abnormal heat: up to 960° C (Glow Wire Test, Reference Standard IEC 60695-2-11) for terminal blok supports.
- Possibility to install up to 4 terminal blocks.
- For available terminal blocks, see enclosures section.

CE

GREY RAL 7035

## Connecting devices to get combinations of modular enclosures and boards

ITEM	TYPE	INTERNAL Ø mm	HOLE Ø mm	FERRULE Ø mm	LENGHT mm	PACKAGING PIECES
<b>EC52121</b>	PG21	21,6	29,0	38,0	23,0	10/50
<b>EC52129</b>	PG29	27,7	37,5	44,2	23,0	10/50
<b>EC52136</b>	PG36	34,9	47,5	52,6	24,5	10/50

## Handles with insulated screws

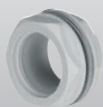
ITEM	COLOUR	DIMENSIONS W x H x D mm	PACKAGING PIECES
<b>EC690MA</b>	■	134 x43 x 26,5	1/10

## Spare flanges with screws and gaskets for flanged boards

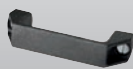
ITEM	DIMENSIONS mm	FOR BOARD	PACKAGING PIECES
<b>EC690F1</b>	85x74	69021-22-23-24-25-26-690F4	10
<b>EC690F2</b>	153x104	69034-69035	10
<b>EC690F3</b>	120x280	69045-69046	10
<b>EC690F5</b>	197x149	69036	10

## Flange for wall mounting bases for 2 industrial sockets 16/32A or schuko sockets

ITEM	DIMENSIONS mm	FOR BOARD	PACKAGING PIECES
<b>EC690F4</b>	120x280	Flange for 2 panel mounting sockets 16/32A or schuko sockets on support on boards 69045-46	1/10



EC52129



EC690MA



EC690F1



EC690F2/F5



EC690F3



EC690F4

board system

## ACCESSORIES FOR DISTRIBUTION BOARDS **SERIES 690**

### MAIN TECHNICAL FEATURES:

- Material: shock resistant technopolymer on ABS base for flanges.
- Material: rigid 6.6 Nylon for handles and connecting devices.
- Material : made of shock resistant technopolymer on PC base, resistance to abnormal heat: up to 960° C (Glow Wire Test, Reference Standard IEC 60695-2-11) for terminal blok supports.
- Possibility to install up to 4 terminal blocks.
- For available terminal blocks, see enclosures section.

GREY RAL 7035

## Modular blank plates for distribution boards and enclosures, 4,5 modules

ITEM	DIMENSIONS mm	COLOUR	PACKAGING PIECES
<b>EC600TC</b>	4,5 modules DIN EN 50022 - 52x82	GREY RAL 7035	25

## Plastic supports for brass terminal blocks

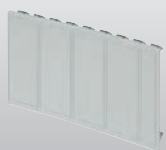
ITEM	FOR BOARDS	COLOUR	PACKAGING PIECES
<b>EC67004</b>	8 modules boards	GREY RAL 7035	-/10
<b>EC67012</b>	12 and 19 modules boards	GREY RAL 7035	-/10

## Plastic bracket to keep IP-protection and double insulation

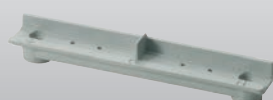
ITEM	DIMENSIONS mm	COLOUR	PACKAGING PIECES
<b>EC600SF</b>	20x13x59	GREY RAL 7035	50

## DIN rail adapter for 2 «MyLIFE» devices

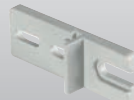
ITEM	DIMENSIONS mm	COLOUR	PACKAGING PIECES
<b>ECL4608</b>	50 x 45 x 57	GREY RAL 7035	40



**EC600TC**



**EC67004**



**EC600SF**



**ECL4608**

## MAIN TECHNICAL FEATURES

### SAMPLE OF CONFIGURATION "ASC"

The 8, 12 and 19 modules boards are equipped with internal hinges to support the lid during wiring operation

Carrying handle

Self-adhesive circuit labels

Blank plate for unused switches

Snap-on scratch-proof door with a triangle safety key

Wall fixing bracket plastic to keep IP-protection and double insulation

16 A sockets EN60309 or protected schuko/ bivalent sockets

Screw caps to gain double insulation

Combined circuit breaker which can be mounted together with the emergency button (on request)

Inlet through power cable by cable gland and industrial socket

The distribution boards Board System Series 690 are one of the most flexible and adaptable solution thanks to the several combinations: inclined 16A industrial sockets EN 60309 from 2 to 8 seats, horizontal 16/32A interlocked sockets without fuse holder from 2 to 4 seats, horizontal 16/32A interlocked sockets without fuse holder with 4 seats, vertical 16/32A interlocked sockets with fuse holder from 2 to 3 seats, vertical 16/32A interlocked sockets with fuse holder with 4 seats, the possibility to install also Schuko / bivalent sockets.

The distribution boards comply with the requirements of the Reference Standard EN 61439 "Low-voltage switchgear and controlgear assemblies", are supplied complete with wiring diagram, conformity declaration and label with relevant data. They are available in 2 different versions:  
**ASSEMBLED BOARD TYPE BDO:** board equipped with protective devices and intended for installation in places accessible to unskilled personnel untrained to the specific use. Usually used for fixed installation.

**ASSEMBLED BOARD TYPE ASC:** board equipped with protective devices and intended for use on construction sites, or at least in places of temporary work, which is only accessed by authorized and qualified personnel. Typically used for mobile installations because it is suitable for being moved frequently and supplied with carrying handle and power cable with industrial plug. Each cabled distribution board is supplied complete with wiring diagram and declaration of conformity.





## ASSEMBLED DISTRIBUTION BOARDS DBO TYPE **SERIES 690**

### MAIN TECHNICAL FEATURES:

- Reference standard CEI EN 61439-1, CEI EN 61439-3.
- Suggested application: wall fixed installation.
- Distribution boards intended to be operated by ordinary persons.
- Supplied with: inclined EN 60309 sockets or Italian standard/schuko sockets, MCB 6kA, 16A protection devices, screw caps for double insulation.
- Each piece packed in strong cardboard boxes suitable for transport and storage.
- **Different combination supplied on request.**



GREY RAL 7035

## Assembled distribution board DBO type - 2 vertical sockets - 16A

ITEM	INSTALLED SOCKETS				IP PROTECTION DEGREE	MCB PROTECTION DEVICE	MAXIMUM SUPPLIABLE POWER	PACKAGING PIECES
	EN 309 2P+⊕	EN 309 3P+⊕	EN 309 3P+N+⊕	SCHUKO ITALIAN				
<b>EC6902120</b>	1	1	-	-	44	1x4P 16A	10,5 kW	1
<b>EC6902121</b>	2	-	-	-	44	1x2P 16A	3,6 kW	1
<b>EC6902122</b>	1	-	-	1	44	1x2P 16A	3,6 kW	1
<b>EC6902123</b>	-	-	-	2	44	1x2P 16A	3,6 kW	1
<b>EC6902124</b>	-	2	-	-	44	1x3P 16A	10,5 kW	1
<b>EC6902130</b>	1	1	-	-	65	1x4P 16A	10,5 kW	1
<b>EC6902131</b>	2	-	-	-	65	1x2P 16A	3,6 kW	1
<b>EC6902132</b>	-	2	-	-	65	1x3P 16A	10,5 kW	1

## Assembled distribution board DBO type - 3 vertical sockets - 16A

ITEM	INSTALLED SOCKETS				IP PROTECTION DEGREE	MCB PROTECTION DEVICE	MAXIMUM SUPPLIABLE POWER	PACKAGING PIECES
	EN 309 2P+⊕	EN 309 3P+⊕	EN 309 3P+N+⊕	SCHUKO ITALIAN				
<b>EC6902220</b>	2	1	-	-	44	1x4P 16A	10,5 kW	1
<b>EC6902221</b>	1	1	1	-	44	1x4P 16A	10,5 kW	1
<b>EC6902222</b>	2	-	-	1	44	1x2P 16A	3,6 kW	1
<b>EC6902223</b>	1	2	-	-	44	1x4P 16A	10,5 kW	1
<b>EC6902224</b>	1	1	-	1	44	1x4P 16A	10,5 kW	1
<b>EC6902225</b>	3	-	-	-	44	1x2P 16A	3,6 kW	1
<b>EC6902226</b>	-	-	-	3	44	1x2P 16A	3,6 kW	1
<b>EC6902227</b>	-	3	-	-	44	1x3P 16A	10,5 kW	1
<b>EC6902230</b>	2	1	-	-	65	1x4P 16A	10,5 kW	1
<b>EC6902231</b>	1	2	-	-	65	1x4P 16A	10,5 kW	1
<b>EC6902232</b>	1	1	1	-	65	1x4P 16A	10,5 kW	1
<b>EC6902233</b>	3	-	-	-	65	1x2P 16A	3,6 kW	1
<b>EC6902234</b>	-	3	-	-	65	1x3P 16A	10,5 kW	1

Dimensions W x H x D: 105x337x95 mm



Dimensions W x H x D: 105x430x95 mm



## ASSEMBLED DISTRIBUTION BOARDS DBO TYPE **SERIES 690**

### MAIN TECHNICAL FEATURES:

- Reference standard CEI EN 61439-1, CEI EN 61439-3.
- Suggested application: wall fixed installation.
- Distribution boards intended to be operated by ordinary persons.
- Supplied with: inclined EN 60309 sockets or Italian standard/schuko sockets, MCB 6kA, 16A protection devices, screw caps for double insulation.
- Each piece packed in strong cardboard boxes suitable for transport and storage.
- **Different combination supplied on request.**



GREY RAL 7035

## Assembled distribution board DBO type - 4 sockets - 16A

ITEM	INSTALLED SOCKETS				IP PROTECTION DEGREE	MCB PROTECTION DEVICE	MAXIMUM SUPPLIABLE POWER	PACKAGING PIECES
	EN 309 2P+⊕	EN 309 3P+⊕	EN 309 3P+N+⊕	SCHUKO ITALIAN				
<b>EC6902320</b>	2	2	-	-	44	1x4P 16A	10,5 kW	1
<b>EC6902321</b>	2	1	1	-	44	1x4P 16A	10,5 kW	1
<b>EC6902322</b>	1	1	1	1	44	1x4P 16A	10,5 kW	1
<b>EC6902323</b>	2	-	-	2	44	1x2P 16A	3,6 kW	1
<b>EC6902324</b>	4	-	-	-	44	1x2P 16A	3,6 kW	1
<b>EC6902325</b>	-	4	-	-	44	1x3P 16A	10,5 kW	1
<b>EC6902326</b>	3	1	-	-	44	1x4P 16A	10,5 kW	1
<b>EC6902330</b>	2	2	-	-	65	1x4P 16A	10,5 kW	1
<b>EC6902331</b>	2	1	1	-	65	1x4P 16A	10,5 kW	1
<b>EC6902332</b>	1	2	1	-	65	1x4P 16A	10,5 kW	1
<b>EC6902333</b>	4	-	-	-	65	1x2P 16A	3,6 kW	1
<b>EC6902334</b>	-	4	-	-	65	1x3P 16A	10,5 kW	1
<b>EC6902336</b>	3	1	-	-	65	1x4P 16A	10,5 kW	1

Dimensions B x H x P: 200x430x95 mm



## ASSEMBLED DISTRIBUTION BOARDS DBO TYPE **SERIES 690**

### MAIN TECHNICAL FEATURES:

- Reference standard CEI EN 61439-1, CEI EN 61439-3.
- Suggested application: wall fixed installation.
- Distribution boards intended to be operated by ordinary persons.
- Distribution boards 3 sockets supplied with: inclined EN 60309 sockets or Italian standard/schuko sockets, MCB 6kA, 16A protection devices, screw caps for double insulation.
- Distribution boards 2 interlocked sockets 16/32A supplied with: inclined interlocked EN 60309 sockets, MCB 6kA, 16/32A protection devices, screw caps for double insulation.
- Each piece packed in strong cardboard boxes suitable for transport and storage.
- **Different combinations supplied on request.**



GREY RAL 7035

## Assembled distribution board DBO type - 3 horizontal sockets - 16A

ITEM	INSTALLED SOCKETS				IP PROTECTION DEGREE	MCB PROTECTION DEVICE	MAXIMUM SUPPLIABLE POWER	PACKAGING PIECES
	EN 309 2P+⊕	EN 309 3P+⊕	EN 309 3P+N+⊕	SCHUKO ITALIAN				
EC6902420	2	1	-	-	44	1x4P 16A	10,5 kW	1
EC6902421	1	2	-	-	44	1x4P 16A	10,5 kW	1
EC6902422	1	1	1	-	44	1x4P 16A	10,5 kW	1
EC6902423	1	1	-	1	44	1x4P 16A	10,5 kW	1
EC6902424	3	-	-	-	44	1x2P 16A	3,6 kW	1
EC6902425	-	3	-	-	44	1x3P 16A	10,5 kW	1
EC6902430	2	1	-	-	65	1x4P 16A	10,5 kW	1
EC6902431	1	2	-	-	65	1x4P 16A	10,5 kW	1
EC6902432	1	1	1	-	65	1x4P 16A	10,5 kW	1
EC6902433	3	-	-	-	65	1x2P 16A	3,6 kW	1
EC6902434	-	3	-	-	65	1x3P 16A	10,5 kW	1

## Assembled distribution board DBO type - 2 horizontal interlocked sockets without fuse holder - 16/32A

ITEM	INSTALLED SOCKETS			IP PROTECTION DEGREE	MCB PROTECTION DEVICE	MAXIMUM SUPPLIABLE POWER	PACKAGING PIECES
	EN 309 2P+⊕	EN 309 3P+⊕	EN 309 3P+N+⊕				
EC6902460	2x16A	-	-	44	1x2P 16A	3,6 kW	1
EC6902461	-	2x16A	-	44	1x3P 16A	10,5 kW	1
EC6902462	1x16A	1x16A	-	44	1x4P 16A	10,5 kW	1
EC6902463	1x16A	-	1x16A	44	1x4P 16A	10,5 kW	1
EC6902464	1x16A	1x32A	-	44	1x2P16A + 1x3P 32A	24,5 kW	1
EC6902465	1x16A	-	1x32A	44	1x2P16A + 1x4P 32A	24,5 kW	1
EC6902470	2x16A	-	-	65	1x2P 16A	3,6 kW	1
EC6902471	-	2x16A	-	65	1x3P 16A	10,5 kW	1
EC6902472	1x16A	1x16A	-	65	1x4P 16A	10,5 kW	1
EC6902473	1x16A	-	1x16A	65	1x4P 16A	10,5 kW	1
EC6902474	1x16A	1x32A	-	65	1x2P16A + 1x3P 32A	24,5 kW	1
EC6902475	1x16A	-	1x32A	65	1x2P16A + 1x4P 32A	24,5 kW	1

Dimensions W x H x D: 360x320x135 mm



## ASSEMBLED DISTRIBUTION BOARDS DBO TYPE **SERIES 690**

### MAIN TECHNICAL FEATURES:

- Reference standard CEI EN 61439-1, CEI EN 61439-3.
- Suggested application: wall fixed installation.
- Distribution boards intended to be operated by ordinary persons.
- Distribution boards 6 sockets supplied with: inclined EN 60309 sockets or Italian standard/schuko sockets, MCB 6kA, 16A protection devices, screw caps for double insulation.
- Distribution boards 4 interlocked sockets 16/32A supplied with: inclined interlocked EN 60309 sockets, MCB 6kA, 16/32A protection devices, screw caps for double insulation.
- Each piece packed in strong cardboard boxes suitable for transport and storage.
- **Different combinations supplied on request.**



GREY RAL 7035

## Assembled distribution board DBO type - 6 sockets - 16A

ITEM	INSTALLED SOCKETS				IP PROTECTION DEGREE	MCB PROTECTION DEVICE	MAXIMUM SUPPLIABLE POWER	PACKAGING PIECES
	EN 309 2P+⊕	EN 309 3P+⊕	EN 309 3P+N+⊕	SCHUKO ITALIAN				
EC6902520	3	3	-	-	44	1x2P 16A + 1x3P 16A	14,1 kW	1
EC6902521	2	2	2	-	44	1x2P 16A + 1x4P 16A	14,1 kW	1
EC6902522	2	2	1	1	44	1x2P 16A + 1x4P 16A	14,1 kW	1
EC6902523	2	1	1	2	44	1x2P 16A + 1x4P 16A	14,1 kW	1
EC6902524	6	-	-	-	44	2x2P 16A	7,2 kW	1
EC6902525	-	6	-	-	44	2x3P 16A	21,0 kW	1
EC6902530	3	3	-	-	65	1x2P 16A + 1x3P 16A	14,1 kW	1
EC6902531	2	2	2	-	65	1x2P 16A + 1x4P 16A	14,1 kW	1
EC6902532	3	2	1	-	65	1x2P 16A + 1x4P 16A	14,1 kW	1
EC6902533	6	-	-	-	65	2x2P 16A	7,2 kW	1
EC6902534	-	6	-	-	65	2x3P 16A	21,0 kW	1
EC6902535	4	2	-	-	65	2x2P 16A + 1x3P 16A	17,7 kW	1

## Assembled distribution board DBO type - 4 horizontal interlocked sockets without fuse holder - 16/32A

ITEM	INSTALLED SOCKETS			IP PROTECTION DEGREE	MCB PROTECTION DEVICE	MAXIMUM SUPPLIABLE POWER	PACKAGING PIECES
	EN 309 2P+⊕	EN 309 3P+⊕	EN 309 3P+N+⊕				
EC6902560	2x16A	2x16A	-	44	1x2P 16A + 1x3P 16A	14,1 kW	1
EC6902561	2x16A	1x16A	1x16A	44	1x2P 16A + 1x4P 16A	14,1 kW	1
EC6902562	4x16A	-	-	44	2x2P 16A	7,2 kW	1
EC6902563	-	4x16A	-	44	2x3P 16A	21,0 kW	1
EC6902564	2x16A	1x16A	-	44	1x2P 16A + 1x3P 16A	34,7 kW	1
EC6902565	-	1x32A	-		+1x3P 32A		
EC6902565	2x16A	1x16A	1x32A	44	1x2P 16A + 1x3P 16A	34,7 kW	1
EC6902565					+1x4P 32A		
EC6902570	2x16A	2x16A	-	65	1x2P 16A + 1x3P 16A	14,1 kW	1
EC6902571	2x16A	1x16A	1x16A	65	1x2P 16A + 1x4P 16A	14,1 kW	1
EC6902572	4x16A	-	-	65	2x2P 16A	7,2 kW	1
EC6902573	-	4x16A	-	65	2x3P 16A	21,0 kW	1
EC6902574	2x16A	1x16A	-	65	1x2P 16A + 1x3P 16A	34,7 kW	1
EC6902574	-	1x32A	-		+1x3P 32A		
EC6902575	2x16A	1x16A	1x32A	65	1x2P 16A + 1x3P 16A	34,7 kW	1
EC6902575					+1x4P 32A		



Dimensions W x H x D: 320x510x135 mm





## ASSEMBLED DISTRIBUTION BOARDS DBO TYPE **SERIES 690**

### MAIN TECHNICAL FEATURES:

- Reference standard CEI EN 61439-1, CEI EN 61439-3.
- Suggested application: wall fixed installation.
- Distribution boards intended to be operated by ordinary persons.
- Distribution boards 8 sockets supplied with: inclined EN 60309 sockets or Italian standard/schuko sockets, MCB 6kA, 16A protection devices, screw caps for double insulation.
- Each piece packed in strong cardboard boxes suitable for transport and storage.
- **Different combinations supplied on request.**



GREY RAL 7035

## Assembled distribution board DBO type - 8 sockets - 16A

ITEM	INSTALLED SOCKETS			IP PROTECTION DEGRE	MCB PROTECTION DEVICE	MAXIMUM SUPPLIABLE POWER	PACKAGING PIECES
	EN 309 2P+⊕	EN 309 3P+⊕	EN 309 3P+N+⊕				
<b>EC6902620</b>	8	-	-	44	4x2P 16A	14,1 kW	1
<b>EC6902621</b>	4	4	-	44	1x2P 16A + 1x3P 16A	13,8 kW	1
<b>EC6902622</b>	4	-	4	44	1x2P 16A + 1x4P 16A	13,8 kW	1
<b>EC6902623</b>	4	2	2	44	1x2P 16A + 1x4P 16A	13,8 kW	1
<b>EC6902630</b>	8	-	-	65	4x2P 16A	14,1 kW	1
<b>EC6902631</b>	4	4	-	65	1x2P 16A + 1x3P 16A	13,2 kW	1
<b>EC6902632</b>	4	-	4	65	1x2P 16A + 1x4P 16A	13,2 kW	1
<b>EC6902633</b>	4	2	2	65	1x2P 16A + 1x4P 16A	13,2 kW	1

Dimensions W x H x D: 400x525x135 mm



## ASSEMBLED DISTRIBUTION BOARDS DBO TYPE SERIES 690

### MAIN TECHNICAL FEATURES:

- Reference standard CEI EN 61439-1, CEI EN 61439-3.
- Suggested application: wall fixed installation.
- Distribution boards intended to be operated by ordinary persons.
- Supplied with interlocked sockets 16/32A with fuse holder gG 10,3x38 mm type (not included) and LED light indicator for blown fuse, MCB 6kA, 16/32A protection devices, screw caps for double insulation.
- Each piece packed in strong cardboard boxes suitable for transport and storage.
- **Different combinations supplied on request.**

LED light indicator  
for blown fuse



CE

GREY RAL 7035

## Assembled distribution board DBO type - 2 interlocked vertical sockets with fuse holder - 16/32A

ITEM	INSTALLED SOCKETS			IP PROTECTION DEGREE	MCB PROTECTION DEVICE	MAXIMUM SUPPLIABLE POWER	PACKAGING PIECES
	EN 309 2P+⊕	EN 309 3P+⊕	EN 309 3P+N+⊕				
EC6904540	2x16A	-	-	44	1x2P 16A	3,6 kW	1
EC6904541	-	2x16A	-	44	1x3P 16A	10,5 kW	1
EC6904542	-	-	2x16A	44	1x4P 16A	10,5 kW	1
EC6904543	1x16A	1x16A	-	44	1x4P 16A	10,5 kW	1
EC6904544	1x16A	-	1x16A	44	1x4P 16A	10,5 kW	1
EC6904545	-	1x16A	1x16A	44	1x4P 16A	10,5 kW	1
EC6904546	2x32A	-	-	44	1x2P 32A	7,0 kW	1
EC6904547	-	2x32A	-	44	1x3P 32A	21,0 kW	1
EC6904548	-	-	2x32A	44	1x4P 32A	21,0 kW	1
EC6904549	1x16A	1x32A	-	44	1x4P 32A	21,0 kW	1
EC6904550	1x16A	-	1x32A	44	1x4P 32A	21,0 kW	1
EC6904551	-	1x32A	1x32A	44	1x4P 32A	21,0 kW	1
EC6904560	2x16A	-	-	65	1x2P 16A	3,6 kW	1
EC6904561	-	2x16A	-	65	1x3P 16A	10,5 kW	1
EC6904562	-	-	2x16A	65	1x4P 16A	10,5 kW	1
EC6904563	1x16A	1x16A	-	65	1x4P 16A	10,5 kW	1
EC6904564	1x16A	-	1x16A	65	1x4P 16A	10,5 kW	1
EC6904565	-	1x16A	1x16A	65	1x4P 16A	10,5 kW	1
EC6904566	2x32A	-	-	65	1x2P 32A	7,0 kW	1
EC6904567	-	2x32A	-	65	1x3P 32A	21,0 kW	1
EC6904568	-	-	2x32A	65	1x4P 32A	21,0 kW	1
EC6904569	1x16A	1x32A	-	65	1x4P 32A	21,0 kW	1
EC6904570	1x16A	-	1x32A	65	1x4P 32A	21,0 kW	1
EC6904571	-	1x32A	1x32A	65	1x4P 32A	21,0 kW	1

On request the sockets can be supplied without fuse holder

Dimensions W x H x D: 320x510x135 mm



## ASSEMBLED DISTRIBUTION BOARDS DBO TYPE SERIES 690

### MAIN TECHNICAL FEATURES:

- Reference standard CEI EN 61439-1, CEI EN 61439-3.
- Suggested application: wall fixed installation.
- Distribution boards intended to be operated by ordinary persons.
- Supplied with interlocked sockets 16/32A with fuse holder gG 10,3x38 mm type (not included) and LED light indicator for blown fuse, MCB 6kA, 16/32A protection devices, screw caps for double insulation.
- Each piece packed in strong cardboard boxes suitable for transport and storage.
- **Different combinations supplied on request.**

LED light indicator  
for blown fuse



CE

GREY RAL 7035

## Assembled distribution board DBO type - 4 horizontal interlocked sockets with fuse holder - 16/32A

ITEM	INSTALLED SOCKETS			IP PROTECTION DEGREE	MCB PROTECTION DEVICE	MAXIMUM SUPPLIABLE POWER	PACKAGING PIECES
	EN 309 2P+	EN 309 3P+	EN 309 3P+N+				
<b>EC6903620</b>	2x16A	2x16A	-	44	1x2P 16A + 1x3P 16A	14,1 kW	1
<b>EC6903621</b>	2x16A	-	2x16A	44	1x2P 16A + 1x4P 16A	14,1 kW	1
<b>EC6903622</b>	2x16A	2x32A	-	44	1x2P 16A + 1x3P 32A	24,5 kW	1
<b>EC6903623</b>	2x16A	-	2x32A	44	1x2P 16A + 1x4P 32A	24,5 kW	1
<b>EC6903630</b>	2x16A	2x16A	-	65	1x2P 16A + 1x3P 16A	14,1 kW	1
<b>EC6903631</b>	2x16A	-	2x16A	65	1x2P 16A + 1x4P 16A	14,1 kW	1
<b>EC6903632</b>	2x16A	2x32A	-	65	1x2P 16A + 1x3P 32A	24,5 kW	1
<b>EC6903633</b>	2x16A	-	2x32A	65	1x2P 16A + 1x4P 32A	24,5 kW	1

## Assembled distribution board DBO type - 3 vertical interlocked sockets with fuse holder - 16/32A

ITEM	INSTALLED SOCKETS			IP PROTECTION DEGREE	MCB PROTECTION DEVICE	MAXIMUM SUPPLIABLE POWER	PACKAGING PIECES
	EN 309 2P+	EN 309 3P+	EN 309 3P+N+				
<b>EC6904620</b>	2x16A	1x16A	-	44	1x2P 16A + 1x3P 16A	14,1 kW	1
<b>EC6904621</b>	1x16A	-	2x16A	44	1x2P 16A + 1x4P 16A	14,1 kW	1
<b>EC6904622</b>	2x16A	1x32A	-	44	1x2P 16A + 1x3P 32A	24,5 kW	1
<b>EC6904623</b>	2x16A	-	1x32A	44	1x2P 16A + 1x4P 32A	24,5 kW	1
<b>EC6904630</b>	2x16A	1x16A	-	65	1x2P 16A + 1x3P 16A	14,1 kW	1
<b>EC6904631</b>	1x16A	-	2x16A	65	1x2P 16A + 1x4P 16A	14,1 kW	1
<b>EC6904632</b>	2x16A	1x32A	-	65	1x2P 16A + 1x3P 32A	24,5 kW	1
<b>EC6904633</b>	2x16A	-	1x32A	65	1x2P 16A + 1x4P 32A	24,5 kW	1

Dimensions W x H x D: 400x525x135 mm



On request the vertical sockets can be supplied without fuse holder

## ASSEMBLED DISTRIBUTION BOARDS ASC TYPE SERIES 690

### MAIN TECHNICAL FEATURES:

- Reference standard CEI EN 61439-1, CEI EN 61439-4.
- Suggested application: mobile installation.
- Suggested use: construction sites or temporary installations, where only trained people are allowed.
- Supplied with inclined EN 60309 sockets or Italian standard/schuko sockets, MCB 16A protection devices 6kA, RCCB or RCBO 40A 30mA, screw caps for double insulation, 4 mt cable H07RN-F with EN 60309 16A plug.
- Each piece packed in strong cardboard boxes suitable for transport and storage.
- **Different combinations supplied on request.**



GREY RAL 7035

## Assembled distribution board ASC type - 2 vertical sockets - 16A

ITEM	INSTALLED SOCKETS				IP PROTECTION DEGREE	RCBO PROTECTION DEVICE	MAXIMUM SUPPLIABLE POWER	PACKAGING PIECES
	EN 309 2P+⊕	EN 309 3P+⊕	EN 309 3P+N+⊕	SCHUKO ITALIAN				
<b>EC6902100</b>	1	1	-	-	44	1x4P 16A - 30mA	10,5 kW	1
<b>EC6902101</b>	1	-	-	1	44	1x2P 16A - 30mA	3,6 kW	1
<b>EC6902102</b>	2	-	-	-	44	1x2P 16A - 30mA	3,6 kW	1
<b>EC6902103</b>	-	-	-	2	44	1x2P 16A - 30mA	3,6 kW	1
<b>EC6902104</b>	-	2	-	-	44	1x4P 16A - 30mA	10,5 kW	1
<b>EC6902110</b>	1	1	-	-	65	1x4P 16A - 30mA	10,5 kW	1
<b>EC6902111</b>	2	-	-	-	65	1x2P 16A - 30mA	3,6 kW	1
<b>EC6902112</b>	-	2	-	-	65	1x4P 16A - 30mA	10,5 kW	1

• Available on request with cabled emergency push-button, item code ...-E

## Assembled distribution board ASC type - 3 vertical sockets - 16A

ITEM	INSTALLED SOCKETS				IP PROTECTION DEGREE	RCBO PROTECTION DEVICE	MAXIMUM SUPPLIABLE POWER	PACKAGING PIECES
	EN 309 2P+⊕	EN 309 3P+⊕	EN 309 3P+N+⊕	SCHUKO ITALIAN				
<b>EC6902200</b>	2	1	-	-	44	1x4P 16A - 30mA	10,5 kW	1
<b>EC6902201</b>	1	1	1	-	44	1x4P 16A - 30mA	10,5 kW	1
<b>EC6902202</b>	2	-	-	1	44	1x2P 16A - 30mA	3,6 kW	1
<b>EC6902203</b>	1	2	-	-	44	1x4P 16A - 30mA	10,5 kW	1
<b>EC6902204</b>	1	1	-	1	44	1x4P 16A - 30mA	10,5 kW	1
<b>EC6902205</b>	3	-	-	-	44	1x2P 16A - 30mA	3,6 kW	1
<b>EC6902206</b>	-	3	-	-	44	1x4P 16A - 30mA	10,5 kW	1
<b>EC6902207</b>	-	-	-	3	44	1x2P 16A - 30mA	3,6 kW	1
<b>EC6902210</b>	2	1	-	-	65	1x4P 16A - 30mA	10,5 kW	1
<b>EC6902211</b>	1	2	-	-	65	1x4P 16A - 30mA	10,5 kW	1
<b>EC6902212</b>	1	1	1	-	65	1x4P 16A - 30mA	10,5 kW	1
<b>EC6902213</b>	3	-	-	-	65	1x2P 16A - 30mA	3,6 kW	1
<b>EC6902214</b>	-	3	-	-	65	1x4P 16A - 30mA	10,5 kW	1

• Available on request with cabled emergency push-button, item code ...-E.

Dimensioni W x H x D:  
105x337x95 mm



Dimensioni W x H x D:  
105x430x95 mm



## ASSEMBLED DISTRIBUTION BOARDS ASC TYPE **SERIES 690**

### MAIN TECHNICAL FEATURES:

- Reference standard CEI EN 61439-1, CEI EN 61439-4.
- Suggested application: mobile installation.
- Suggested use: construction sites or temporary installations, where only trained people are allowed.
- Supplied with inclined EN 60309 sockets or Italian standard/schuko sockets, MCB 16A protection devices 6kA, RCCB or RCBO 40A 30mA, screw caps for double insulation, 4 mt cable H07RN-F with EN 60309 16A plug.
- Each piece packed in strong cardboard boxes suitable for transport and storage.
- **Different combinations supplied on request.**



GREY RAL 7035

## Assembled distribution board ASC type - 4 sockets - 16A

ITEM	INSTALLED SOCKETS				IP PROTECTION DEGREE	RCBO PROTECTION DEVICE	MAXIMUM SUPPLIABLE POWER	PACKAGING PIECES
	EN 309 2P+⊕	EN 309 3P+⊕	EN 309 3P+N+⊕	SCHUKO ITALIAN				
<b>EC6902300</b>	2	2	-	-	44	1x4P 16A - 30mA	10,5 kW	1
<b>EC6902301</b>	2	1	1	-	44	1x4P 16A - 30mA	10,5 kW	1
<b>EC6902302</b>	1	1	1	1	44	1x4P 16A - 30mA	10,5 kW	1
<b>EC6902303</b>	2	-	-	2	44	1x2P 16A - 30mA	3,6 kW	1
<b>EC6902304</b>	4	-	-	-	44	1x2P 16A - 30mA	3,6 kW	1
<b>EC6902305</b>	-	4	-	-	44	1x4P 16A - 30mA	10,5 kW	1
<b>EC6902308</b>	3	1	-	-	44	1x4P 16A - 30mA	10,5 kW	1
<b>EC6902310</b>	2	2	-	-	65	1x4P 16A - 30mA	10,5 kW	1
<b>EC6902311</b>	2	1	1	-	65	1x4P 16A - 30mA	10,5 kW	1
<b>EC6902312</b>	1	2	1	-	65	1x4P 16A - 30mA	10,5 kW	1
<b>EC6902313</b>	4	-	-	-	65	1x2P 16A - 30mA	3,6 kW	1
<b>EC6902314</b>	-	4	-	-	65	1x4P 16A - 30mA	10,5 kW	1
<b>EC6902318</b>	3	1	-	-	65	1x4P 16A - 30mA	10,5 kW	1

• Available on request with cabled emergency push-button, item code ...-E

## Assembled distribution board ASC type - 4 sockets - 16A - with support

ITEM	INSTALLED SOCKETS				IP PROTECTION DEGREE	RCBO PROTECTION DEVICE	MAXIMUM SUPPLIABLE POWER	PACKAGING PIECES
	EN 309 2P+⊕	EN 309 3P+⊕	EN 309 3P+N+⊕	SCHUKO ITALIAN				
<b>EC6902300C</b>	2	2	-	-	44	1x4P 16A - 30mA	10,5 kW	1
<b>EC6902303C</b>	2	-	-	2	44	1x2P 16A - 30mA	3,6 kW	1
<b>EC6902304C</b>	4	-	-	-	44	1x2P 16A - 30mA	3,6 kW	1
<b>EC6902310C</b>	2	2	-	-	65	1x4P 16A - 30mA	10,5 kW	1
<b>EC6902313C</b>	4	-	-	-	65	1x2P 16A - 30mA	3,6 kW	1

• Available on request with cabled emergency push-button, item code ...-E.



Dimensions W x H x D: 200x430x95 mm



## ASSEMBLED DISTRIBUTION BOARDS ASC TYPE **SERIES 690**

### MAIN TECHNICAL FEATURES:

- Reference standard CEI EN 61439-1, CEI EN 61439-4.
- Suggested application: mobile installation.
- Suggested use: construction sites or temporary installations, where only trained people are allowed.
- Supplied with inclined EN 60309 sockets or Italian standard/schuko sockets, MCB 16A protection devices 6kA, RCCB or RCBO 40A 30mA, screw caps for double insulation, 4 mt cable H07RN-F with EN 60309 16A plug.
- Each piece packed in strong cardboard boxes suitable for transport and storage.
- **Different combinations supplied on request.**



GREY RAL 7035

## Assembled distribution board ASC type - 4 sockets - 16A - with support and protection

ITEM	INSTALLED SOCKETS				IP PROTECTION DEGREE	RCBO PROTECTION DEVICE	MAXIMUM SUPPLIABLE POWER	PACKAGING PIECES
	EN 309 2P+⊕	EN 309 3P+⊕	EN 309 3P+N+⊕	SCHUKO ITALIAN				
<b>EC6902300T</b>	2	2	-	-	44	1x4P 16A - 30mA	10,5 kW	1
<b>EC6902301T</b>	2	1	1	-	44	1x4P 16A - 30mA	10,5 kW	1
<b>EC6902302T</b>	1	1	1	1	44	1x4P 16A - 30mA	10,5 kW	1
<b>EC6902303T</b>	2	-	-	2	44	1x2P 16A - 30mA	3,6 kW	1
<b>EC6902304T</b>	4	-	-	-	44	1x2P 16A - 30mA	3,6 kW	1
<b>EC6902305T</b>	-	4	-	-	44	1x4P 16A - 30mA	10,5 kW	1
<b>EC6902310T</b>	2	2	-	-	65	1x4P 16A - 30mA	10,5 kW	1
<b>EC6902311T</b>	2	1	1	-	65	1x4P 16A - 30mA	10,5 kW	1
<b>EC6902312T</b>	1	2	1	-	65	1x4P 16A - 30mA	10,5 kW	1
<b>EC6902313T</b>	4	-	-	-	65	1x2P 16A - 30mA	3,6 kW	1
<b>EC6902314T</b>	-	4	-	-	65	1x4P 16A - 30mA	10,5 kW	1

- Available on request with cabled emergency push-button, item code ...-E.

Dimensions W x H x D: 200x430x95 mm



## ASSEMBLED DISTRIBUTION BOARDS ASC TYPE SERIES 690

### MAIN TECHNICAL FEATURES:

- Reference standard CEI EN 61439-1, CEI EN 61439-4. Suggested application: mobile installation.
- Suggested use: construction sites or temporary installations, where only trained people are allowed.
- Distribution boards ASC type supplied with 3 inclined EN 60309 sockets 16A or Italian standard/schuko sockets, MCB 16A protection devices 6kA, RCCB or RCBO 40A 30mA, screw caps for double insulation, handle, 4 mt cable H07RN-F with EN 60309 16A plug.
- Distribution boards ASC type supplied with 2 inclined interlocked EN 60309 sockets 16/32A, MCB 16/32A protection devices 6kA, RCCB or RCBO 40A 30mA, screw caps for double insulation, handle, 4 mt cable H07RN-F with EN 60309 16/32A plug.
- Each piece packed in strong cardboard boxes suitable for transport and storage.
- **Different combinations supplied on request.**



GREY RAL 7035

## Assembled distribution board ASC type - 3 horizontal sockets - 16A

ITEM	INSTALLED SOCKETS				IP PROTECTION DEGREE	RCBO PROTECTION DEVICE	MAXIMUM SUPPLIABLE POWER	PACKAGING PIECES
	EN 309 2P+⊕	EN 309 3P+⊕	EN 309 3P+N+⊕	SCHUKO ITALIAN				
EC6902400	2	1	-	-	44	1x4P 16A - 30mA	10,5 kW	1
EC6902401	1	2	-	-	44	1x4P 16A - 30mA	10,5 kW	1
EC6902402	1	1	1	-	44	1x4P 16A - 30mA	10,5 kW	1
EC6902403	1	1	-	1	44	1x4P 16A - 30mA	10,5 kW	1
EC6902404	3	-	-	-	44	1x2P 16A - 30mA	3,6 kW	1
EC6902405	-	3	-	-	44	1x4P 16A - 30mA	10,5 kW	1
EC6902410	2	1	-	-	65	1x4P 16A - 30mA	10,5 kW	1
EC6902411	1	2	-	-	65	1x4P 16A - 30mA	10,5 kW	1
EC6902412	1	1	1	-	65	1x4P 16A - 30mA	10,5 kW	1
EC6902413	3	-	-	-	65	1x2P 16A - 30mA	3,6 kW	1
EC6902414	-	3	-	-	65	1x4P 16A - 30mA	10,5 kW	1

• Available on request with cabled emergency push-button, item code ...-E.

## Assembled distribution board ASC type - 2 horizontal interlocked sockets without fuse holder - 16/32A

ITEM	INSTALLED SOCKETS			PLUG	IP PROTECTION DEGREE	RCBO OR RCCB PROTECTION DEVICE 30mA	MAXIMUM SUPPLIABLE POWER	PACKAGING PIECES
	EN 309 2P+⊕	EN 309 3P+⊕	EN 309 3P+N+⊕					
EC6902440	2x16A	-	-	16A	44	1x2P 16A - 30mA	3,6 kW	1
EC6902441	-	2x16A	-	16A	44	1x4P 16A - 30mA	10,5 kW	1
EC6902442	1x16A	1x16A	-	16A	44	1x4P 16A - 30mA	10,5 kW	1
EC6902443	1x16A	-	1x16A	16A	44	1x4P 16A - 30mA	10,5 kW	1
EC6902444	1x16A	1x32A	-	32A	44	1x2P 16A + 1x3P 32A RCCB 40A	21,0 kW	1
EC6902445	1x16A	-	1x32A	32A	44	1x2P 16A + 1x4P 32A RCCB 40A	21,0 kW	1
EC6902450	2x16A	-	-	16A	65	1x2P 16A - 30mA	3,6 kW	1
EC6902451	-	2x16A	-	16A	65	1x4P 16A - 30mA	10,5 kW	1
EC6902452	1x16A	1x16A	-	16A	65	1x4P 16A - 30mA	10,5 kW	1
EC6902453	1x16A	-	1x16A	16A	65	1x4P 16A - 30mA	10,5 kW	1
EC6902454	1x16A	1x32A	-	32A	65	1x2P 16A + 1x3P 32A RCCB 40A	21,0 kW	1
EC6902455	1x16A	-	1x32A	32A	65	1x2P 16A + 1x4P 32A RCCB 40A	21,0 kW	1

• Available on request with cabled emergency push-button, item code ...-E.



Dimensions W x H x D: 320x360x135 mm



board system

## ASSEMBLED DISTRIBUTION BOARDS ASC TYPE **SERIES 690**

### MAIN TECHNICAL FEATURES:

- Reference standard CEI EN 61439-1, CEI EN 61439-4.
- Suggested application: mobile installation.
- Suggested use: construction sites or temporary installations, where only trained people are allowed.
- Distribution boards ASC type supplied with inclined EN 60309 sockets 16A or Italian standard/schuko sockets, MCB 16A protection devices 6kA, RCCB or RCBO 40A 30mA, screw caps for double insulation, handle, 4 mt cable H07RN-F with EN 60309 16A plug.
- Each piece packed in strong cardboard boxes suitable for transport and storage.
- **Different combinations supplied on request.**



GREY RAL 7035

## Assembled distribution board ASD type - 6 sockets - 16A

ITEM	INSTALLED SOCKETS				IP PROTECTION DEGREE	PROTECTION DEVICE		MAXIMUM SUPPLIABLE POWER	PACKAGING PIECES
	EN 309 2P+⊕	EN 309 3P+⊕	EN 309 3P+N+⊕	SCHUKO ITALIAN		MCB 16A	RCCB 30mA		
<b>EC6902500</b>	3	3	-	-	44	1x2P+1x3P	1x4P 40A	10,5 kW	1
<b>EC6902501</b>	2	2	2	-	44	1x2P+1x4P	1x4P 40A	10,5 kW	1
<b>EC6902502</b>	2	2	1	1	44	1x2P+1x4P	1x4P 40A	10,5 kW	1
<b>EC6902503</b>	2	1	1	2	44	2x2P+1x4P	1x4P 40A	10,5 kW	1
<b>EC6902504</b>	6	-	-	-	44	2x2P	1x2P 40A	3,6 kW	1
<b>EC6902505</b>	-	6	-	-	44	2x3P	1x4P 40A	10,5 kW	1
<b>EC6902510</b>	3	3	-	-	65	1x2P+1x3P	1x4P 40A	10,5 kW	1
<b>EC6902511</b>	2	2	2	-	65	1x2P+1x4P	1x4P 40A	10,5 kW	1
<b>EC6902512</b>	3	2	1	-	65	1x2P+1x4P	1x4P 40A	10,5 kW	1
<b>EC6902513</b>	6	-	-	-	65	2x2P	1x2P 40A	3,6 kW	1
<b>EC6902514</b>	-	6	-	-	65	2x3P	1x4P 40A	10,5 kW	1
<b>EC6902515</b>	4	2	-	-	65	2x2P+1x3P	1x4P 40A	10,5 kW	1

- Available on request with cabled emergency push-button, item code ...-E.

Dimensions B x H x P: 320x510x135 mm





## ASSEMBLED DISTRIBUTION BOARDS ASC TYPE SERIES 690

### MAIN TECHNICAL FEATURES:

- Reference standard CEI EN 61439-1, CEI EN 61439-4.
- Suggested application: mobile installation.
- Suggested use: construction sites or temporary installations, where only trained people are allowed.
- Distribution boards ASC type supplied with inclined EN 60309 sockets 16A or Italian standard/schuko sockets, MCB 16A protection devices 6kA, RCCB or RCBO 40A 30mA, screw caps for double insulation, handle, 4 mt cable H07RN-F with EN 60309 16A plug.
- Each piece packed in strong cardboard boxes suitable for transport and storage.
- **Different combinations supplied on request.**



GREY RAL 7035

## Assembled distribution board ASC type - 6 sockets - 16A - with support

ITEM	INSTALLED SOCKETS				IP PROTECTION DEGREE	PROTECTION DEVICE		MAXIMUM SUPPLIABLE POWER	PACKAGING PIECES
	EN 309 2P+⊕	EN 309 3P+⊕	EN 309 3P+N+⊕	SCHUKO ITALIAN		MCB 16A	RCCB 30mA		
<b>EC6902500C</b>	3	3	-	-	44	1x2P+1x3P	1x4P 40A	10,5 kW	1
<b>EC6902501C</b>	2	2	2	-	44	1x2P+1x4P	1x4P 40A	10,5 kW	1
<b>EC6902502C</b>	2	2	1	1	44	1x2P+1x4P	1x4P 40A	10,5 kW	1
<b>EC6902503C</b>	2	1	1	2	44	2x2P+1x4P	1x4P 40A	10,5 kW	1
<b>EC6902504C</b>	6	-	-	-	44	2x2P	1x2P 40A	3,6 kW	1
<b>EC6902505C</b>	-	6	-	-	44	3x3P	1x4P 40A	10,5 kW	1
<b>EC6902510C</b>	3	3	-	-	65	1x2P+1x3P	1x4P 40A	10,5 kW	1
<b>EC6902511C</b>	2	2	2	-	65	1x2P+1x4P	1x4P 40A	10,5 kW	1
<b>EC6902512C</b>	3	2	1	-	65	1x2P+1x4P	1x4P 40A	10,5 kW	1
<b>EC6902513C</b>	6	-	-	-	65	2x2P	1x2P 40A	3,6kW	1
<b>EC6902514C</b>	-	6	-	-	65	2x3P	1x4P 40A	10,5 kW	1
<b>EC6902515C</b>	4	2	-	-	65	2x2P+1x3P	1x4P 40A	10,5 kW	1

- Available on request with cabled emergency push-button, item code ...-E.

Dimensions W x H x D: 320x510x135 mm



## ASSEMBLED DISTRIBUTION BOARDS ASC TYPE **SERIES 690**

### MAIN TECHNICAL FEATURES:

- Reference standard CEI EN 61439-1, CEI EN 61439-4.
- Suggested application: mobile installation.
- Suggested use: construction sites or temporary installations, where only trained people are allowed.
- Distribution boards ASC type supplied with inclined EN 60309 sockets 16A or Italian standard/schuko sockets, MCB 16A protection devices 6kA, RCCB or RCBO 40A 30mA, screw caps for double insulation, handle, 4 mt cable H07RN-F with EN 60309 16A plug.
- Each piece packed in strong cardboard boxes suitable for transport and storage.
- **Different combinations supplied on request.**



GREY RAL 7035

## Assembled distribution board ASC type - 6 sockets - 16A - with support and protection

ITEM	INSTALLED SOCKETS				IP PROTECTION DEGREE	PROTECTION DEVICE		MAXIMUM SUPPLIABLE POWER	PACKAGING PIECES
	EN 309 2P+⊕	EN 309 3P+⊕	EN 309 3P+N+⊕	SCHUKO ITALIAN		MCB 16A	RCCB 30mA		
<b>EC6902500T</b>	3	3	-	-	44	1x2P+1x3P	1x4P 40A	10,5 kW	1
<b>EC6902501T</b>	2	2	2	-	44	1x2P+1x4P	1x4P 40A	10,5 kW	1
<b>EC6902502T</b>	2	2	1	1	44	1x2P+1x4P	1x4P 40A	10,5 kW	1
<b>EC6902503T</b>	2	1	1	2	44	2x2P+1x4P	1x4P 40A	10,5 kW	1
<b>EC6902504T</b>	6	-	-	-	44	2x2P	1x2P 40A	3,6 kW	1
<b>EC6902505T</b>	-	6	-	-	44	2x3P	1x4P 40A	10,5 kW	1
<b>EC6902510T</b>	3	3	-	-	65	1x2P+1x3P	1x4P 40A	10,5 kW	1
<b>EC6902511T</b>	2	2	2	-	65	1x2P+1x4P	1x4P 40A	10,5 kW	1
<b>EC6902512T</b>	3	2	1	-	65	1x2P+1x4P	1x4P 40A	10,5 kW	1
<b>EC6902513T</b>	6	-	-	-	65	2x2P	1x2P 40A	3,6 kW	1
<b>EC6902514T</b>	-	6	-	-	65	2x3P	1x4P 40A	10,5 kW	1
<b>EC6902515T</b>	4	2	-	-	65	2x2P+1x3P	1x4P 40A	10,5 kW	1

- Available on request with cabled emergency push-button, item code ...-E.

Dimensions B x H x P: 320x510x135 mm



## ASSEMBLED DISTRIBUTION BOARDS ASC TYPE SERIES 690

### MAIN TECHNICAL FEATURES:

- Reference standard CEI EN 61439-1, CEI EN 61439-4.
- Suggested application: mobile installation.
- Suggested use: construction sites or temporary installations, where only trained people are allowed.
- Distribution boards supplied with interlocked inclined EN 60309 sockets 16/32A, MCB 16/32A protection devices 6kA, RCCB 40A 30mA, screw caps for double insulation, handle, 4 mt cable H07RN-F with EN 60309 16/32A plug.
- Each piece packed in strong cardboard boxes suitable for transport and storage.
- **Different combinations supplied on request.**



GREY RAL 7035

## Assembled distribution board ASC type - 4 interlocked sockets without fuse holder - 16/32A

ITEM	INSTALLED SOCKETS			PLUG	IP PROTECTION DEGREE	PROTECTION DEVICE		MAXIMUM SUPPLIABLE POWER	PACKAGING PIECES
	EN 309 2P+⊕	EN 309 3P+⊕	EN 309 3P+N+⊕			MCB	RCCB 30mA		
<b>EC6902540</b>	2x16A	2x16A	-	16A	44	1x2P 16A + 1x3P 16A	1x4P 40A	10,5 kW	1
<b>EC6902541</b>	2x16A	1x16A	1x16A	16A	44	1x2P 16A + 1x4P 16A	1x4P 40A	10,5 kW	1
<b>EC6902542</b>	4x16A	-	-	16A	44	2x2P 16A	1x2P 40A	3,6 kW	1
<b>EC6902543</b>	-	4x16A	-	16A	44	2x3P 16A	1x4P 40A	10,5 kW	1
<b>EC6902544</b>	2x16A	1x16A	-	32A	44	1x2P 16A + 1x3P 16	1x4P 40A	21,0 kW	1
	-	1x32A	-			+1x3P 32A			
<b>EC6902545</b>	2x16A	1x16A	1x32A	32A	44	1x2P 16A + 1x3P 16	1x4P 40A	21,0 kW	1
	-	-	-			+1x4P 32A			
<b>EC6902550</b>	2x16A	2x16A	-	16A	65	1x2P 16A + 1x3P 16A	1x4P 40A	10,5 kW	1
<b>EC6902551</b>	2x16A	1x16A	1x16A	16A	65	1x2P 16A + 1x4P 16A	1x4P 40A	10,5 kW	1
<b>EC6902552</b>	4x16A	-	-	16A	65	2x2P 16A	1x2P 40A	3,6 kW	1
<b>EC6902553</b>	-	4x16A	-	16A	65	2x3P 16A	1x4P 40A	10,5 kW	1
<b>EC6902554</b>	2x16A	1x16A	-	32A	65	1x2P 16A + 1x3P 16	1x4P 40A	21,0 kW	1
	-	1x32A	-			+1x3P 32A			
<b>EC6902555</b>	2x16A	1x16A	1x32A	32A	65	1x2P 16A + 1x3P 16	1x4P 40A	21,0 kW	1
	-	-	-			+1x4P 32A			

• Available on request with cabled emergency push-button, item code ...-E.

Dimensions W x H x D: 320x510x135 mm



## ASSEMBLED DISTRIBUTION BOARDS ASC TYPE SERIES 690

### MAIN TECHNICAL FEATURES:

- Reference standard CEI EN 61439-1, CEI EN 61439-4.
- Suggested application: mobile installation.
- Suggested use: construction sites or temporary installations, where only trained people are allowed.
- Distribution boards ASC type supplied with inclined EN 60309 sockets 16A or Italian standard/schuko sockets, MCB 16A protection devices 6kA, RCCB or RCBO 40A 30mA, screw caps for double insulation, handle, 4 mt cable H07RN-F with EN 60309 16A plug.
- Each piece packed in strong cardboard boxes suitable for transport and storage.
- **Different combinations supplied on request.**



GREY RAL 7035

## Assembled distribution board ASC type - 8 sockets - 16A

ITEM	INSTALLED SOCKETS			IP PROTECTION DEGREE	PROTECTION DEVICE		MAXIMUM SUPPLIABLE POWER	PACKAGING PIECES
	EN 309 2P+⊕	EN 309 3P+⊕	EN 309 3P+N+⊕		MCB	RCCB 30mA		
<b>EC6902600</b>	8	-	-	44	4x2P 16A	1x4P 40A	14,1 kW	1
<b>EC6902601</b>	4	4	-	44	1x2P 16A + 1x3P 16A	1x4P 40A	13,8 kW	1
<b>EC6902602</b>	4	-	4	44	1x2P 16A + 1x4P 16A	1x4P 40A	13,8 kW	1
<b>EC6902603</b>	4	2	2	44	1x2P 16A + 1x4P 16A	1x4P 40A	13,8 kW	1
<b>EC6902610</b>	8	-	-	65	4x2P 16A	1x4P 40A	14,1 kW	1
<b>EC6902611</b>	4	4	-	65	1x2P 16A + 1x3P 16A	1x4P 40A	13,8 kW	1
<b>EC6902612</b>	4	-	4	65	1x2P 16A + 1x4P 16A	1x4P 40A	13,8 kW	1
<b>EC6902613</b>	4	2	2	65	1x2P 16A + 1x4P 16A	1x4P 40A	13,8 kW	1

- Available on request with cabled emergency push-button, item code ...-E.

Dimensions W x H x D: 400x525x135 mm



## ASSEMBLED DISTRIBUTION BOARDS ASC TYPE SERIES 690

### MAIN TECHNICAL FEATURES:

- Reference standard CEI EN 61439-1, CEI EN 61439-4.
- Suggested application: mobile installation.
- Suggested use: construction sites or temporary installations, where only trained people are allowed.
- Supplied with interlocked sockets 16/32A with fuse holder gG 10,3x38 mm type (not included) and LED light indicator for blown fuse, RCCB 40A 30mA, screw caps for double insulation, handle, 4 mt cable H07RN-F with EN 60309 16/32A plug.
- Each piece packed in strong cardboard boxes suitable for transport and storage.
- **Different combinations supplied on request.**

LED light indicator  
for blown fuse



GREY RAL 7035

## Assembled distribution board ASC type - 2 vertical interlocked sockets with fuse holder - 16/32A

ITEM	INSTALLED SOCKETS			PLUG EN 60309	IP PROTECTION DEGREE	RCCB PROTECTION DEVICE	MAXIMUM SUPPLIABLE POWER	PACKAGING PIECES	
	EN 309 2P+⊕	EN 309 3P+⊕	EN 309 3P+N+⊕						
EC6904500	2x16A	-	-	2P+⊕	16A	44	1x2P 40A - 30mA	3,6 kW	1
EC6904501	-	2x16A	-	3P+N+⊕	16A	44	1x4P 40A - 30mA	10,5 kW	1
EC6904502	-	-	2x16A	3P+N+⊕	16A	44	1x4P 40A - 30mA	10,5 kW	1
EC6904503	1x16A	1x16A	-	3P+N+⊕	16A	44	1x4P 40A - 30mA	10,5 kW	1
EC6904504	1x16A	-	1x16A	3P+N+⊕	16A	44	1x4P 40A - 30mA	10,5 kW	1
EC6904505	-	1x16A	1x16A	3P+N+⊕	16A	44	1x4P 40A - 30mA	10,5 kW	1
EC6904506	2x32A	-	-	2P+⊕	32A	44	1x2P 40A - 30mA	7,0 kW	1
EC6904507	-	2x32A	-	3P+N+⊕	32A	44	1x4P 40A - 30mA	21,0 kW	1
EC6904508	-	-	2x32A	3P+N+⊕	32A	44	1x4P 40A - 30mA	21,0 kW	1
EC6904509	1x16A	1x32A	-	3P+N+⊕	32A	44	1x4P 40A - 30mA	21,0 kW	1
EC6904510	1x16A	-	1x32A	3P+N+⊕	32A	44	1x4P 40A - 30mA	21,0 kW	1
EC6904511	-	1x32A	1x32A	3P+N+⊕	32A	44	1x4P 40A - 30mA	21,0 kW	1
EC6904520	2x16A	-	-	2P+⊕	16A	65	1x2P 40A - 30mA	3,6 kW	1
EC6904521	-	2x16A	-	3P+N+⊕	16A	65	1x4P 40A - 30mA	10,5 kW	1
EC6904522	-	-	2x16A	3P+N+⊕	16A	65	1x4P 40A - 30mA	10,5 kW	1
EC6904523	1x16A	1x16A	-	3P+N+⊕	16A	65	1x4P 40A - 30mA	10,5 kW	1
EC6904524	1x16A	-	1x16A	3P+N+⊕	16A	65	1x4P 40A - 30mA	10,5 kW	1
EC6904525	-	1x16A	1x16A	3P+N+⊕	16A	65	1x4P 40A - 30mA	10,5 kW	1
EC6904526	2x32A	-	-	2P+⊕	32A	65	1x2P 40A - 30mA	7,0 kW	1
EC6904527	-	2x32A	-	3P+N+⊕	32A	65	1x4P 40A - 30mA	21,0 kW	1
EC6904528	-	-	2x32A	3P+N+⊕	32A	65	1x4P 40A - 30mA	21,0 kW	1
EC6904529	1x16A	1x32A	-	3P+N+⊕	32A	65	1x4P 40A - 30mA	21,0 kW	1
EC6904530	1x16A	-	1x32A	3P+N+⊕	32A	65	1x4P 40A - 30mA	21,0 kW	1
EC6904531	-	1x32A	1x32A	3P+N+⊕	32A	65	1x4P 40A - 30mA	21,0 kW	1

- Available on request with cabled emergency push-button, item code ...-E.
- On request the vertical sockets can be supplied without fuse holder.

Dimensions W x H x D: 320x510x135 mm



## ASSEMBLED DISTRIBUTION BOARDS ASC TYPE SERIES 690

### MAIN TECHNICAL FEATURES:

- Reference standard CEI EN 61439-1, CEI EN 61439-4.
- Suggested application: mobile installation.
- Suggested use: construction sites or temporary installations, where only trained people are allowed.
- Supplied with interlocked sockets 16/32A with fuse holder gG 10,3x38 mm type (not included) and LED light indicator for blown fuse, RCCB 40A 30mA, screw caps for double insulation, handle, 4 mt cable H07RN-F with EN 60309 16/32A plug.
- Each piece packed in strong cardboard boxes suitable for transport and storage.
- **Different combinations supplied on request.**

LED light indicator  
for blown fuse



CE

GREY RAL 7035

## Assembled distribution board ASC type - 4 horizontal interlocked sockets with fuse holder - 16/32A

ITEM	INSTALLED SOCKETS			PLUG	IP PROTECTION DEGREE	PROTECTION DEVICE		MAXIMUM SUPPLIABLE POWER	PACKAGING PIECES
	EN 309 2P+⊕	EN 309 3P+⊕	EN 309 3P+N+⊕			MCB	RCCB 30mA		
<b>EC6903600</b>	2x16A	2x16A	-	16A	44	1x2P 16A + 1x3P 16A	1x4P 40A	10,5 kW	1
<b>EC6903601</b>	2x16A	-	2x16A	16A	44	1x2P 16A + 1x4P 16A	1x4P 40A	10,5 kW	1
<b>EC6903602</b>	2x16A	2x32A	-	32A	44	1x2P 16A + 1x3P 32A	1x4P 40A	21,0 kW	1
<b>EC6903603</b>	2x16A	-	2x32A	32A	44	1x2P 16A + 1x4P 32A	1x4P 40A	21,0 kW	1
<b>EC6903610</b>	2x16A	2x16A	-	16A	65	1x2P 16A + 1x3P 16A	1x4P 40A	10,5 kW	1
<b>EC6903611</b>	2x16A	-	2x16A	16A	65	1x2P 16A + 1x4P 16A	1x4P 40A	10,5 kW	1
<b>EC6903612</b>	2x16A	2x32A	-	32A	65	1x2P 16A + 1x3P 32A	1x4P 40A	21,0 kW	1
<b>EC6903613</b>	2x16A	-	2x32A	32A	65	1x2P 16A + 1x4P 32A	1x4P 40A	21,0 kW	1

## Assembled distribution board ASC type - 3 vertical interlocked sockets with fuse holder - 16/32A

ITEM	INSTALLED SOCKETS			PLUG	IP PROTECTION DEGREE	PROTECTION DEVICE		MAXIMUM SUPPLIABLE POWER	PACKAGING PIECES
	EN 309 2P+⊕	EN 309 3P+⊕	EN 309 3P+N+⊕			MCB	RCCB 30mA		
<b>EC6904600</b>	2x16A	1x16A	-	16A	44	1x2P 16A + 1x3P 16A	1x4P - 40A	10,5 kW	1
<b>EC6904601</b>	1x16A	-	2x16A	16A	44	1x2P 16A + 1x4P 16A	1x4P - 40A	10,5 kW	1
<b>EC6904602</b>	2x16A	1x32A	-	32A	44	1x2P 16A + 1x3P 32A	1x4P - 40A	21,0 kW	1
<b>EC6904603</b>	2x16A	-	1x32A	32A	44	1x2P 16A + 1x4P 32A	1x4P - 40A	21,0 kW	1
<b>EC6904610</b>	2x16A	1x16A	-	16A	65	1x2P 16A + 1x3P 16A	1x4P - 40A	10,5 kW	1
<b>EC6904611</b>	1x16A	-	2x16A	16A	65	1x2P 16A + 1x4P 16A	1x4P - 40A	10,5 kW	1
<b>EC6904612</b>	2x16A	1x32A	-	32A	65	1x2P 16A + 1x3P 32A	1x4P - 40A	21,0 kW	1
<b>EC6904613</b>	2x16A	-	1x32A	32A	65	1x2P 16A + 1x4P 32A	1x4P - 40A	21,0 kW	1

- Available on request with cabled emergency push-button, item code ...-E.



Dimensions W x H x D: 400x525x135 mm



On request the vertical sockets can be supplied without fuse holder.

## ASSEMBLED DISTRIBUTION BOARDS FOR PARTICULAR USES **SERIES 690**

### MAIN TECHNICAL FEATURES:

- Reference standard CEI EN 61439-1, CEI EN 61439-4.
- Suggested application: mobile installation.
- Suggested use: construction sites or temporary installations, where only trained people are allowed.
- Each piece packed in strong cardboard boxes suitable for transport and storage.
- **Different combinations supplied on request.**

CE

GREY RAL 7035

## Assembled distribution board ASC type for scaffolds - with twilight device, 24V sockets, 150VA

ITEM	INSTALLED SOCKETS  EN 60309 2P	NOTE	IP PROTECTION DEGREE	MCB PROTECTION DEVICE	PACKAGING PIECES
------	---	------	----------------------	-----------------------	------------------


<b>EC6902306</b>	2	with twilight device	44	MT 16A 1x2P FUSE 1P-6A	1
------------------	---	----------------------	----	------------------------	---

<b>EC6902307</b>	2	-	44	MT 16A 1x2P FUSE 1P-6A	1
------------------	---	---	----	------------------------	---

- Toroidal transformer 150VA - 220 / 24V ~ secondary protection with fuse 6A type Gg 10,3x38 mm, fuse not included.
- Supplied with EN 60309 sockets, 16A MCB protection devices 6kA, screw caps for double insulation, handle, 4 mt cable H07RN-F with EN 60308 plug 2P+E 16A.

## Assembled distribution board ASC type docking station for e-bike



ITEM	INSTALLED SOCKETS  SCHUKO /ITALIAN	MAXIMUM SUPPLIABLE POWER EACH PLUG	IP PROTECTION DEGREE	RCCB PROTECTION DEVICE	PACKAGING PIECES
------	---	------------------------------------	----------------------	------------------------	------------------

<b>EC6902113</b>	2 x P17/30	1,3 kW	55	2x2P - 6A 30 mA	1
------------------	------------	--------	----	-----------------	---

<b>EC6902319</b>	4 x P17/30	1,3 kW	55	4x2P - 6A 30 mA	1
------------------	------------	--------	----	-----------------	---



EC6902306



EC6902113



EC6902319

board system

## ACCESSORIES FOR DISTRIBUTION BOARDS **SERIES 690**

### MAIN TECHNICAL FEATURES:

- Material: made of powder painted galvanized steel.
- Support for distribution boards series 690.
- Standard colour: black.
- Made of high-resistant metallic tube.
- Equipped with support for wrapping the cable.



### Metallic supports for ASC distribution boards with 8, 12 and 19 modules

ITEM	EXTERNAL DIMENSIONS W x H x D mm	FOR BOARD TYPE	PACKAGING PIECES
<b>EC69040</b>	290x650x390	4 Sockets - 8 Modules	1
<b>EC69041</b>	410x740x390	3/6/8 Sockets - 12/19 Modules 2/3/4 interlocked - 12/19 Modules	1

### Metallic supports with protection for ASC distribution boards with 8 and 12 modules

ITEM	EXTERNAL DIMENSIONS W x H x D mm	FOR BOARD TYPE	PACKAGING PIECES
<b>EC69040T</b>	300x650x360	4 Sockets - 8 Modules	1
<b>EC69041T</b>	460x750x380	3/6 Sockets - 12 Modules 2/4 interlocked - 12 Modules	1

### Cabled emergency push-button for ASC boards

ITEM	DESCRIPTION	DIMENSIONS mm	PACKAGING PIECES
<b>-E</b>	Emergency push-button - Twist to release	Ø 40	1

Add code: -E. to board item. The board will be delivered complete with a wired emergency button and the accessories necessary to carry out the tripping of the protections and the release of the main switch.



EC69040



EC69041



EC69040T



EC69041T



-E



## MAIN TECHNICAL FEATURES

Construction site distribution board

Wall fixing through brackets or on a metallic support

Doors with two metallic locks with standard key

Carrying and lifting handle

Possibility to install an inner pocket for documents and schemes

Doors can be opened up to 180°



Possibility to install up to 8 horizontal interlocked sockets.

Possibility to install sockets up to 63A

Inlet through IP68 cable gland or fixed plugs from 32/63A up to 125A

Resistance to mechanical shocks IK10 (shocks up to 20 j) suitable for heavy duty

System of integrated cable clamps: safety against accidental tears

The construction site distribution boards Board System Series 690, made of two-component technopolymer are specifically designed for mobile installations. Characterized by a high degree of impact resistance (IK10), these boards can absorb the impact energy up to 20J so that they successfully protect the internal equipments.

The emergency button is integrated in the carrying and lifting handle.

The construction site distribution boards can be equipped with our boards for horizontal vertical

interlocked sockets or they can be supplied already pre-wired and assembled, such as ready for use. They permit several different assembling combinations: 5/6 16, 32 and 63A, vertical interlocked sockets with fuse holder or up to 6/8 16 or 32A horizontal interlocked sockets without fuse holder.

The range is completed by the versions with up to 16 industrial socket 16/32/63A IP67 and italian/Schuko sockets with magnetothermal protection.

The power is given to the board through a cable put in a protected terminal block or a fixed 32/63 or 125A plug.

ELETTROCANALI offers a full range of construction site ASC type distribution boards suitable to be installed on a support or on brackets fixed to the wall, designed to meet the needs of power distribution on a construction site with the maximum flexibility and safety. Each cabled distribution board is supplied complete with wiring diagram and declaration of conformity.

mounting examples

**panel** system



## CONSTRUCTION SITE EMPTY DISTRIBUTION BOARD SERIES 690

### MAIN TECHNICAL FEATURES:

- Enclosures made of reinforced high-density technopolymer , self-extinguishing HB according to the Standard UL94.
- Protection degree IP65 for the contained distribution boards.
- System of integrated cable clamps with automatic anchorage.
- Carrying and lifting handle can be used as base for further accessories like beacons.
- Doors with two hinges can be opened up to 180° with two metallic locks with standard key.
- Ready for inlet through M40 cable gland or 63/125A fixed plug.
- Resistance to mechanical shocks IK10 (shocks up to 20 j).
- Ready for our assembled distribution boards and junction boxes.
- High resistance to chemical or atmospheric agents.

CE

GREY RAL 7011

## Construction site empty distribution board

ITEM	EXTERNAL DIMENSIONS W x H x D mm	EQUIPMENT	PACKAGING PIECES
<b>EC69008</b>	870x720x375	Construction site empty distribution board with: emergency push-button, M40 cable gland, two metallic locks with standard key and instruction sheet	1
<b>EC690081</b>	870x720x375	Construction site empty distribution board suitable for 19+19 modules for 6 vertical interlocked sockets with fuse holder or 12 industrial sockets 16/32A with flange 690F4 (not included), emergency push-button, M40 cable gland, two metallic locks with standard key and instruction sheet	1
<b>EC690082</b>	870x720x375	Construction site empty distribution board prepared 19+19 modules for 8 interlocked horizontal sockets with fuse holder, emergency push-button, M40 cable gland, two metallic locks with standard key and instruction sheet.	1



EC69008

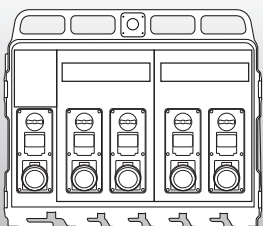


EC690081

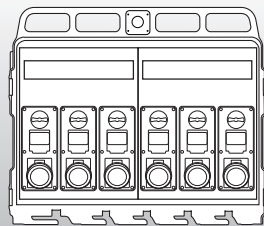


EC690082

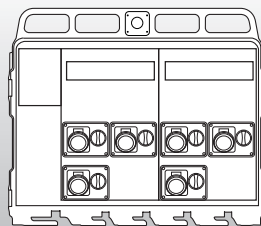
Examples of possible combinations with distribution boards "BOARD System"



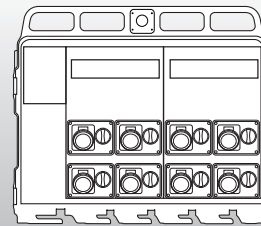
5 vertical sockets



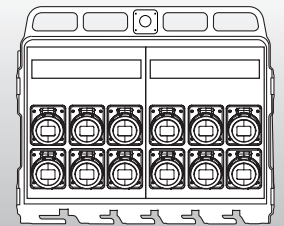
6 vertical sockets



6 horizontal sockets



8 horizontal sockets



12 industrial sockets



## CONSTRUCTION SITE ASSEMBLED DISTRIBUTION BOARD SERIES 690

LED light indicator  
for blown fuse



### MAIN TECHNICAL FEATURES:

- Reference standard: CEI EN 61439-1, CEI EN 61439-4.
- Suggested application: mobile installation.
- Suggested use: construction sites or temporary installations, where only trained people are allowed.
- Supplied with EN 60309 interlocked sockets 16/32/63A with fuse holder (not included), protection device MCB 6/10 kA, rated current 63/80/100/125A, RCCB protection device 30 mA, or RCBO protection device, cabled emergency push-button, terminal block 4x35 mmq.
- Each piece packed in strong cardboard boxes suitable for transport and storage.
- **Different combinations supplied on request.**

CE

GREY RAL 7011

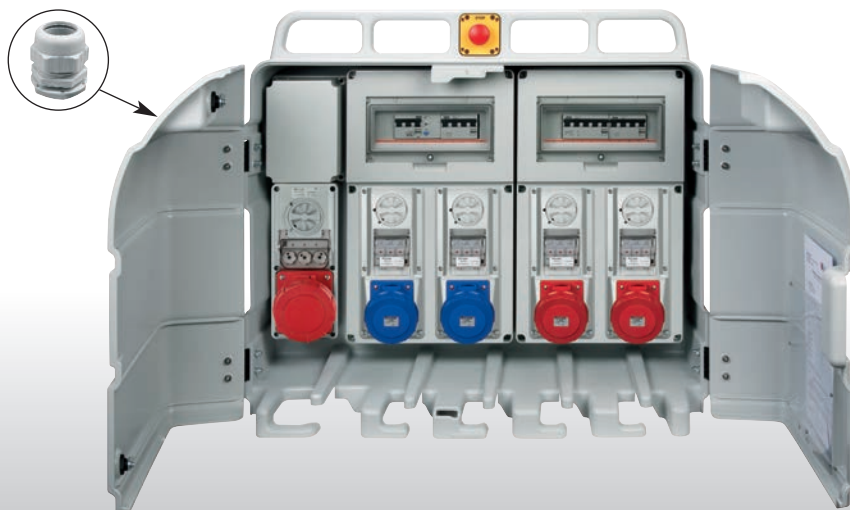
IP65

### \*Protection with MCB 1x2P 16A.

63A sockets without differential protection, on request additional protection 63A - 30mA.

## Construction site assembled distribution boards ASC type - 5 vertical interlocked sockets with fuse holder 16/32/63A - Terminal block

ITEM	SCHUKO ITALIAN 16A	EN 60309 INTERLOCKED SOCKETS WITH FUSE HOLDER								MCB MAIN PROTECTION DEVICE	RCCB 30 mA	MAXIMUM SUPPLIABLE POWER	PACKAGING PIECES	
		16A		32A		63A								
		2P+⊕	2P+⊕	3P+⊕	3P+N+⊕	2P+⊕	3P+⊕	3P+N+⊕	3P+⊕	3P+N+⊕				
EC6900800	-	1	1	-	-	3	-	-	-	-	4P 100A	4P 100A	63 kW	1
EC6900801	-	1	1	-	-	-	3	-	-	-	4P 100A	4P 100A	63 kW	1
EC6900802	-	1	2	-	-	2	-	-	-	-	4P 80A	4P 80A	52 kW	1
EC6900803	-	2	3	-	-	-	-	-	-	-	4P 63A	RCBO	41 kW	1
EC6900804	-	2	-	-	-	3	-	-	-	-	4P 80A	4P 80A	50 kW	1
EC6900805	-	2	1	-	-	2	-	-	-	-	4P 80A	4P 80A	50 kW	1
EC6900806	-	2	1	1	-	-	1	-	-	-	4P 63A	RCBO	41 kW	1
EC6900807	-	3	-	-	-	2	-	-	-	-	4P 63A	RCBO	41 kW	1
EC6900808	-	3	-	1	-	-	1	-	-	-	4P 80A	4P 80A	41 kW	1
EC6900809	-	-	4	-	-	1	-	-	-	-	4P 80A	4P 80A	50 kW	1
EC6900810	-	-	-	-	2	-	3	-	-	-	4P 125A	4P 2x63A	66 kW	1
EC6900811	-	1	2	-	-	1	-	1	-	-	4P 125A	4P 80A	73 kW	1
EC6900812	-	2	1	-	-	1	-	1	-	-	4P 100A	4P 80A	63 kW	1
EC6900813	-	2	1	-	-	-	1	1	-	-	4P 100A	4P 80A	63 kW	1
EC6900814	-	1	2	-	-	1	-	-	1	-	4P 100A	4P 80A	63 kW	1
EC6900815	-	2	-	1	-	-	1	-	1	-	4P 100A	4P 80A	63 kW	1
EC6900816	-	3	-	-	-	-	1	-	1	-	4P 100A	4P 63A	63 kW	1
EC6900817	2*	2	-	-	-	1	-	1	-	-	4P 100A	4P 80A	63 kW	1



5 vertical sockets - terminal block

panel system

## CONSTRUCTION SITE ASSEMBLED DISTRIBUTION BOARD SERIES 690

### MAIN TECHNICAL FEATURES:

- Reference standard: CEI EN 61439-1, CEI EN 61439-4.
- Suggested application: mobile installation.
- Suggested use: construction sites or temporary installations, where only trained people are allowed - ASC Type.
- Supplied with EN 60309 interlocked sockets with fuse holder (not included), protection device MCB 6/10 kA, rated current 63/80/100/125A, RCCB protection device 30 mA, or RCBO protection device, cabled emergency push-button, plug power.
- Each piece packed in strong cardboard boxes suitable for transport and storage.
- **Different combinations supplied on request.**

LED light indicator  
for blown fuse



CE

GREY RAL 7011

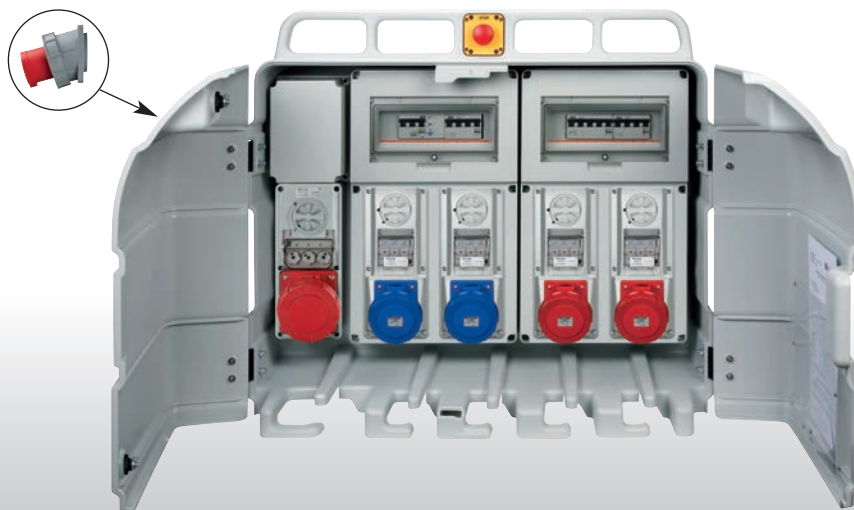
IP65

### \*Protection with MCB 1x2P 16A.

63A sockets without differential protection, on request additional protection 63A - 30mA.

## Construction site assembled distribution boards ASC type - 5 vertical interlocked sockets with fuse holder 16/32/63A - Plug power

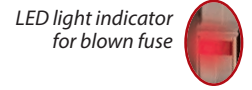
ITEM	SCHUKO ITALIAN 16A	EN 60309 INTERLOCKED SOCKETS WITH FUSE HOLDER								PLUG	MCB MAIN PROTECTION DEVICE	RCCB 30 mA	MAXIMUM SUPPLIABLE POWER	PACKAGING PIECES
		16A		32A		63A								
	2P+⊕	2P+⊕	3P+⊕	3P+N+⊕	2P+⊕	3P+⊕	3P+N+⊕	3P+⊕	3P+N+⊕	3P+N+⊕				
EC6900820	-	1	1	-	-	3	-	-	-	125A	4P 100A	4P 100A	63 kW	1
EC6900821	-	1	1	-	-	-	3	-	-	125A	4P 100A	4P 100A	63 kW	1
EC6900822	-	1	2	-	-	2	-	-	-	125A	4P 80A	4P 80A	52 kW	1
EC6900823	-	2	-	-	-	3	-	-	-	125A	4P 80A	4P 80A	52 kW	1
EC6900824	-	2	1	-	-	2	-	-	-	125A	4P 80A	4P 80A	52 kW	1
EC6900825	-	2	1	1	-	-	1	-	-	63A	4P 63A	RCBO	41 kW	1
EC6900826	-	2	2	-	-	-	1	-	-	63A	4P 63A	RCBO	41 kW	1
EC6900827	-	3	-	-	-	2	-	-	-	63A	4P 63A	RCBO	41 kW	1
EC6900828	-	1	2	-	-	1	-	1	-	125A	4P 125A	4P 80A	73 kW	1
EC6900829	-	2	1	-	-	1	-	1	-	125A	4P 100A	4P 80A	63 kW	1
EC6900830	-	1	2	-	-	-	1	-	1	125A	4P 125A	4P 80A	73 kW	1
EC6900831	-	2	1	-	-	-	1	-	1	125A	4P 100A	4P 80A	63 kW	1
EC6900832	2*	1	1	-	-	-	1	-	1	125A	4P 100A	4P 80A	63 kW	1



5 vertical sockets - plug

panel system

**CONSTRUCTION SITE ASSEMBLED DISTRIBUTION BOARD SERIES 690**



**MAIN TECHNICAL FEATURES:**

- Reference standard: CEI EN 61439-1, CEI EN 61439-4.
- Suggested application: mobile installation.
- Suggested use: construction sites or temporary installations, where only trained people are allowed - ASC Type.
- Supplied with EN 60309 interlocked sockets with fuse holder (not included), protection device MCB 10 kA, rated current 80/100/125A, RCCB protection device 30 mA, cabled emergency push-button, terminal block 4x35 mmq
- Each piece packed in strong cardboard boxes suitable for transport and storage.



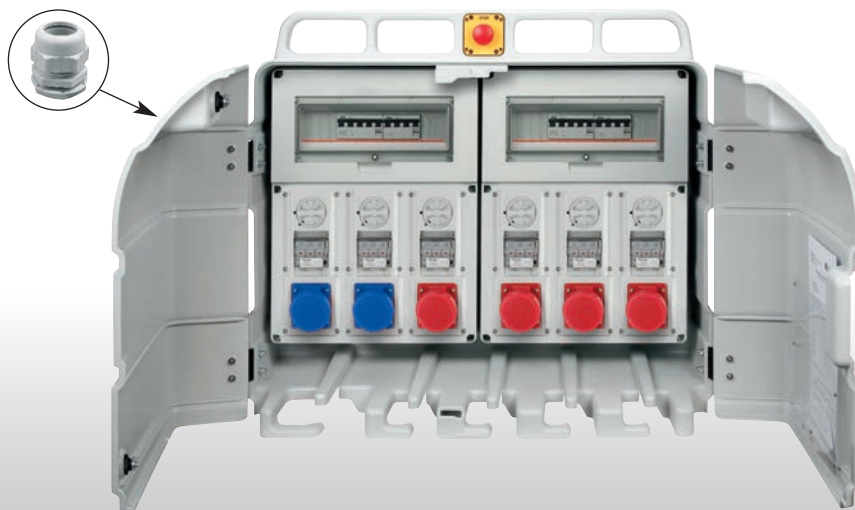
GREY RAL 7011

**IP65**

• **Different combinations supplied on request.**

**Construction site assembled distribution boards ASC type - 6 vertical interlocked sockets with fuse holder 16/32/63A - Terminal block**

ITEM	SCHUKO ITALIAN 16A	EN 60309 INTERLOCKED SOCKETS WITH FUSE HOLDER								MCB MAIN PROTECTION DEVICE	RCCB 30 mA	MAXIMUM SUPPLIABLE POWER	PACKAGING PIECES
		16A			32A			63A					
	2P+⊕	2P+⊕	3P+⊕	3P+N+⊕	2P+⊕	3P+⊕	3P+N+⊕	3P+⊕	3P+N+⊕				
<b>EC6910800</b>	-	4	2	-	-	-	-	-	-	4P 80A	4P 80A	35 kW	1
<b>EC6910801</b>	-	3	3	-	-	-	-	-	-	4P 80A	4P 80A	42 kW	1
<b>EC6910802</b>	-	3	2	-	-	1	-	-	-	4P 80A	4P 80A	52 kW	1
<b>EC6910803</b>	-	3	2	-	-	-	1	-	-	4P 80A	4P 80A	52 kW	1
<b>EC6910804</b>	-	2	3	-	-	1	-	-	-	4P 100A	4P 100A	59 kW	1
<b>EC6910805</b>	-	2	2	-	-	2	-	-	-	4P 125A	4P 2x63A	70 kW	1
<b>EC6910806</b>	-	2	-	2	-	-	2	-	-	4P 125A	4P 2x63A	70 kW	1
<b>EC6910807</b>	-	2	2	-	-	1	1	-	-	4P 125A	4P 2x63A	70 kW	1
<b>EC6910808</b>	-	2	1	-	-	-	3	-	-	4P 125A	4P 2x63A	73 kW	1
<b>EC6910809</b>	-	3	-	-	-	-	2	-	1	4P 125A	4P 2x63A	73 kW	1



6 vertical sockets - terminal block



## CONSTRUCTION SITE ASSEMBLED DISTRIBUTION BOARD SERIES 690

### MAIN TECHNICAL FEATURES:

- Reference standard: CEI EN 61439-1, CEI EN 61439-4.
- Suggested application: mobile installation.
- Suggested use: construction sites or temporary installations, where only trained people are allowed - ASC Type.
- Supplied with EN 60309 interlocked sockets 16/32A, MCB output protection device 6 kA, main protection device MCB 6 kA, rated current 16/32/63A, RCCB protection device 30 mA, or RCBO protection device, cabled emergency push-button, terminal block 4x35 mmq.
- Each piece packed in strong cardboard boxes suitable for transport and storage. Packaging: 1 piece.
- **Different combinations supplied on request.**
- **Series 691 without input box - direct connection.**

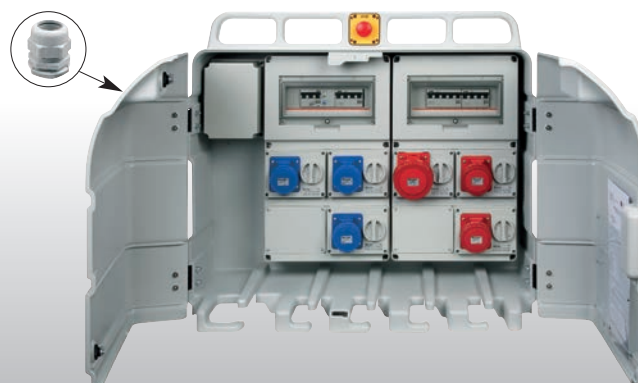
CE

GREY RAL 7011

IP65

## Construction site assembled distribution boards ASC type - 6 horizontal interlocked sockets MCB protection device 16/32A - Terminal block

ITEM	SCHUKO ITALIAN 16A	EN 60309 INTERLOCKED SOCKETS						MCB OUTPUT PROTECTION		MCB MAIN PROTECTION DEVICE	RCBO 30 mA	MAXIMUM SUPPLIABLE POWER
		16A			32A			16A	32A			
		2P+⊕	2P+⊕	3P+⊕	3P+N+⊕	2P+⊕	3P+⊕	3P+N+⊕				
EC6910840	-	3	3	-	-	-	-	1x2P - 1x3P	-	4P 32A	RCBO	14 kW
EC6910841	-	4	2	-	-	-	-	1x2P - 1x3P	-	4P 32A	RCBO	14 kW
EC6910842	-	4	-	2	-	-	-	1x2P - 1x4P	-	4P 32A	RCBO	14 kW
EC6910843	-	4	1	1	-	-	-	1x2P - 1x4P	-	4P 32A	RCBO	14 kW
EC6910844	2	2	2	2	-	-	-	1x2P - 1x4P	-	4P 32A	RCBO	14 kW
EC6910845	2	2	1	1	-	1	1	1x2P - 1x4P	RCBO	4P 32A	RCBO	14 kW
EC6910846	-	6	-	-	-	-	-	-	RCBO	4P 16A	RCBO	9 kW
EC6900840	-	2	3	-	-	1	-	1x2P - 1x3P	1x3P	4P 63A	RCBO	35 kW
EC6900841	-	3	2	-	-	1	-	1x2P - 1x3P	1x3P	4P 63A	RCBO	35 kW
EC6900842	-	3	3	-	-	-	-	1x2P - 1x3P	-	4P 63A	RCBO	14 kW
EC6900843	-	4	1	-	-	1	-	2x2P - 1x3P	1x3P	4P 63A	RCBO	37 kW
EC6900844	-	4	1	1	-	-	-	2x2P - 1x4P	-	4P 63A	RCBO	17 kW
EC6900845	-	4	1	-	-	-	1	2x2P - 1x3P	1x4P	4P 63A	RCBO	37 kW
EC6900846	-	3	-	2	-	-	1	1x2P - 1x4P	1x4P	4P 63A	RCBO	33 kW
EC6900847	-	3	1	1	-	1	-	1x2P - 1x4P	1x3P	4P 63A	RCBO	35 kW
EC6900848	-	3	1	2	-	-	-	1x2P - 1x3P - 1x4P	-	4P 63A	RCBO	23 kW
EC6900849	-	2	2	1	-	1	-	1x2P - 1x3P - 1x4P	1x3P	4P 63A	RCBO	41 kW
EC6900850	-	3	2	-	1	-	-	1x2P - 1x3P	1x2P	4P 63A	RCBO	20 kW
EC6900851	-	3	2	-	-	-	1	1x2P - 1x3P	1x4P	4P 63A	RCBO	33 kW
EC6900852	-	3	1	1	-	-	1	1x2P - 1x4P	1x4P	4P 63A	RCBO	35 kW
EC6900853	2	3	2	-	-	1	-	2x2P - 1x3P	1x3P	4P 63A	RCBO	38 kW
EC6900854	2	3	-	2	-	-	1	2x2P - 1x4P	1x4P	4P 63A	RCBO	38 kW
EC6900855	-	2	-	2	-	-	2	1x2P - 1x4P	1x4P	4P 63A	RCBO	41 kW
EC6900856	-	2	2	-	-	2	-	1x2P - 1x3P	1x3P	4P 63A	RCBO	41 kW
EC6900857	-	2	1	1	-	1	1	1x2P - 1x4P	1x4P	4P 63A	RCBO	41 kW



6 horizontal sockets - terminal block

panel system

CONSTRUCTION SITE ASSEMBLED DISTRIBUTION BOARD SERIES 690

MAIN TECHNICAL FEATURES:

- Reference standard: CEI EN 61439-1, CEI EN 61439-4.
- Suggested application: mobile installation.
- Suggested use: construction sites or temporary installations, where only trained people are allowed - ASC Type.
- Supplied with EN 60309 interlocked sockets 16/32A, MCB output protection device 6 kA, main protection device MCB 6 kA, rated current 16/32/63A, RCCB protection device 30 mA, or RCBO protection device, cabled emergency push-button, plug power.
- Each piece packed in strong cardboard boxes suitable for transport and storage. Packaging: 1 piece.
- **Different combinations supplied on request.**
- **Series 691 without input box.**



GREY RAL 7011

IP65

Construction site assembled distribution boards ASC type - 6 horizontal interlocked sockets MCB protection device 16/32A - Plug power

ITEM	SCHUKO ITALIAN 16A	EN 60309 INTERLOCKED SOCKETS						MCB OUTPUT PROTECTION		PLUG	MCB MAIN PROTECTION DEVICE	RCBO 30 mA	MAXIMUM SUPPLIABLE POWER
		16A			32A			16A	32A				
		2P+⊕	2P+⊕	3P+⊕	3P+N+⊕	2P+⊕	3P+⊕	3P+N+⊕					
EC6910860	-	3	3	-	-	-	-	1x2P - 1x3P	-	32A	4P 32A	RCBO	14 kW
EC6910861	-	4	2	-	-	-	-	1x2P - 1x3P	-	32A	4P 32A	RCBO	14 kW
EC6910862	-	4	-	2	-	-	-	1x2P - 1x4P	-	32A	4P 32A	RCBO	14 kW
EC6910863	-	4	1	1	-	-	-	1x2P - 1x4P	-	32A	4P 32A	RCBO	14 kW
EC6910864	2	2	2	2	-	-	-	1x2P - 1x4P	-	32A	4P 32A	RCBO	14 kW
EC6910865	2	2	1	1	-	1	1	1x2P - 1x4P	RCBO	32A	4P 32A	RCBO	14 kW
EC6900860	-	2	3	-	-	1	-	1x2P - 1x3P	1x3P	63A	4P 63A	RCBO	35 kW
EC6900861	-	3	2	-	-	1	-	1x2P - 1x3P	1x3P	63A	4P 63A	RCBO	35 kW
EC6900862	-	3	3	-	-	-	-	1x2P - 1x3P	-	63A	4P 63A	RCBO	14 kW
EC6900863	-	4	1	-	-	1	-	2x2P - 1x3P	1x3P	63A	4P 63A	RCBO	37 kW
EC6900864	-	4	1	1	-	-	-	2x2P - 1x4P	-	63A	4P 63A	RCBO	17 kW
EC6900865	-	4	1	-	-	-	1	2x2P - 1x3P	1x4P	63A	4P 63A	RCBO	37 kW
EC6900866	-	3	-	2	-	-	1	1x2P - 1x4P	1x4P	63A	4P 63A	RCBO	33 kW
EC6900867	-	3	1	1	-	1	-	1x2P - 1x4P	1x3P	63A	4P 63A	RCBO	35 kW
EC6900868	-	3	1	2	-	-	-	1x2P-1x3P-1x4P	-	63A	4P 63A	RCBO	23 kW
EC6900869	-	2	2	1	-	1	-	1x2P-1x3P-1x4P	1x3P	63A	4P 63A	RCBO	41 kW
EC6900870	-	3	2	-	1	-	-	1x2P - 1x3P	1x2P	63A	4P 63A	RCBO	20 kW
EC6900871	-	3	2	-	-	-	1	1x2P - 1x3P	1x4P	63A	4P 63A	RCBO	33 kW
EC6900872	-	3	1	1	-	-	1	1x2P - 1x4P	1x4P	63A	4P 63A	RCBO	35 kW
EC6900873	2	3	2	-	-	1	-	2x2P - 1x3P	1x3P	63A	4P 63A	RCBO	38 kW
EC6900874	2	3	-	2	-	-	1	2x2P - 1x4P	1x4P	63A	4P 63A	RCBO	38 kW



6 horizontal sockets - plug





## CONSTRUCTION SITE ASSEMBLED DISTRIBUTION BOARD SERIES 690

### MAIN TECHNICAL FEATURES:

- Reference standard: CEI EN 61439-1, CEI EN 61439-4.
- Suggested application: mobile installation.
- Suggested use: construction sites or temporary installations, where only trained people are allowed - ASC Type.
- Supplied with EN 60309 interlocked sockets 16/32A, MCB output protection device 6 kA, main protection device MCB 6/10 kA, rated current 63/80A, RCCB protection device 30 mA, or RCBO protection device, cabled emergency push-button, terminal block 4x35 mmq.
- Each piece packed in strong cardboard boxes suitable for transport and storage. Packaging: 1 piece.
- **Different combinations supplied on request.**
- **Series 691 without input box - direct connection.**

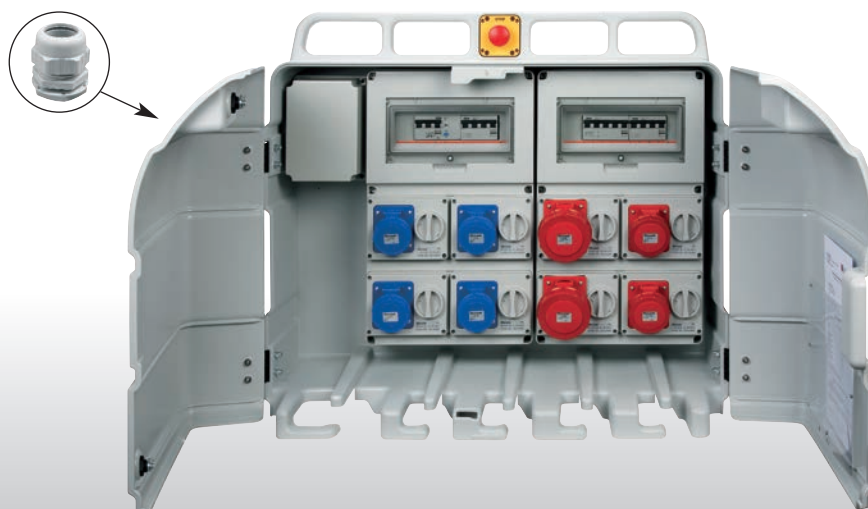
CE

GREY RAL 7011

IP65

## Construction site assembled distribution boards ASC type - 8 horizontal interlocked sockets MCB protection device 16/32A - Terminal block

ITEM	SCHUKO ITALIAN 16A	EN 60309 INTERLOCKED SOCKETS						MCB OUTPUT PROTECTION		MCB MAIN PROTECTION DEVICE	RCCB/RCBO 30 mA	MAXIMUM SUPPLIABLE POWER
		16A			32A			16A	32A			
	2P+⊕	2P+⊕	3P+⊕	3P+N+⊕	2P+⊕	3P+⊕	3P+N+⊕					
<b>EC6910880</b>	-	8	-	-	-	-	-	3x2P	-	4P 63A	RCBO	10,5 kW
<b>EC6910881</b>	-	6	2	-	-	-	-	2x2P - 1x3P	-	4P 63A	RCBO	17 kW
<b>EC6900880</b>	-	2	2	2	-	2	-	1x2P - 1x3P - 1x4P	1x3P	4P 63A	RCBO	41 kW
<b>EC6900881</b>	-	2	2	2	-	-	2	1x2P - 1x3P - 1x4P	1x4P	4P 63A	RCBO	41 kW
<b>EC6900882</b>	-	4	2	2	-	-	-	2x2P - 1x3P - 1x4P	-	4P 63A	RCBO	38 kW
<b>EC6900883</b>	-	4	2	-	-	2	-	2x2P - 1x3P	1x3P	4P 63A	RCBO	38 kW
<b>EC6900884</b>	-	4	2	-	-	-	2	2x2P - 1x3P	1x4P	4P 63A	RCBO	38 kW
<b>EC6900885</b>	-	4	2	-	2	-	-	2x2P - 2x3P	1x2P	4P 63A	RCBO	35 kW
<b>EC6900886</b>	-	1	1	-	2	2	2	1x4P	1x2P - 1x4P	4P 80A	4P 80A	38 kW
<b>EC6900887</b>	2	2	2	2	-	-	-	3x2P - 1x3P - 1x4P	-	4P 63A	RCBO	31 kW
<b>EC6900888</b>	2	2	-	-	-	2	2	2x2P	1x4P	4P 63A	RCBO	27 kW
<b>EC6900889</b>	-	4	4	-	-	-	-	2x2P - 2x3P	-	4P 63A	RCBO	27 kW



8 horizontal sockets - terminal block



## CONSTRUCTION SITE ASSEMBLED DISTRIBUTION BOARD SERIES 690

### MAIN TECHNICAL FEATURES:

- Reference standard: CEI EN 61439-1, CEI EN 61439-4.
- Suggested application: mobile installation.
- Suggested use: construction sites or temporary installations, where only trained people are allowed - ASC Type.
- Supplied with EN 60309 interlocked sockets 16/32A, MCB output protection device 6 kA, main protection device MCB 6/10 kA, rated current 63/80A, RCCB protection device 30 mA, or RCBO protection device, cabled emergency push-button, plug power.
- Each piece packed in strong cardboard boxes suitable for transport and storage. Packaging: 1 piece.
- **Different combinations supplied on request.**
- **Series 691 without input box.**

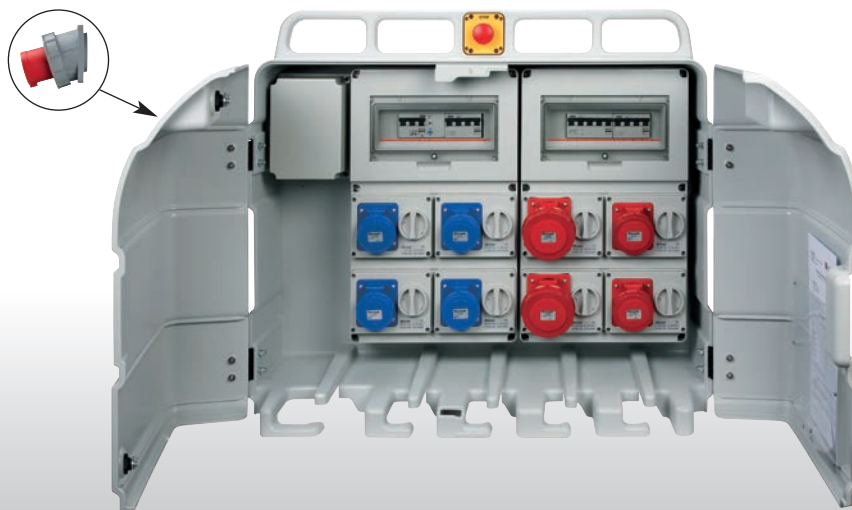


GREY RAL 7011

**IP65**

## Construction site assembled distribution boards ASC type - 8 horizontal interlocked sockets MCB protection device 16/32A - Plug power

ITEM	SCHUKO ITALIAN 16A	EN 60309 INTERLOCKED SOCKETS						MCB OUTPUT PROTECTION		PLUG	MCB MAIN PROTECTION DEVICE	RCCB/RCBO 30 mA	MAXIMUM SUPPLIABLE POWER
		16A			32A			16A	32A				
	2P+⊕	2P+⊕	3P+⊕	3P+N+⊕	2P+⊕	3P+⊕	3P+N+⊕			3P+N+⊕			
<b>EC6910890</b>	-	8	-	-	-	-	-	3x2P	-	63A	4P 63A	RCBO	10,5 kW
<b>EC6910891</b>	-	6	2	-	-	-	-	2x2P - 1x3P	-	63A	4P 63A	RCBO	17 kW
<b>EC6900890</b>	-	2	2	2	-	2	-	1x2P-1x3P-1x4P	1x3P	63A	4P 63A	RCBO	41 kW
<b>EC6900891</b>	-	2	2	2	-	-	2	1x2P-1x3P-1x4P	1x4P	63A	4P 63A	RCBO	41 kW
<b>EC6900892</b>	-	4	2	2	-	-	-	2x2P-1x3P-1x4P	-	63A	4P 63A	RCBO	38 kW
<b>EC6900893</b>	-	4	2	-	-	2	-	2x2P - 1x3P	1x3P	63A	4P 63A	RCBO	38 kW
<b>EC6900894</b>	-	4	2	-	-	-	2	2x2P - 1x3P	1x4P	63A	4P 63A	RCBO	38 kW
<b>EC6900895</b>	-	4	2	-	2	-	-	2x2P - 2x3P	1x2P	63A	4P 63A	RCBO	35 kW
<b>EC6900896</b>	-	1	1	-	2	2	2	1x4P	1x2P - 1x4P	125A	4P 80A	4P 80A	38 kW
<b>EC6900897</b>	2	2	2	2	-	-	-	3x2P-1x3P-1x4P	-	63A	4P 63A	RCBO	31 kW
<b>EC6900898</b>	2	2	-	-	-	2	2	2x2P	1x4P	63A	4P 63A	RCBO	27 kW
<b>EC6900899</b>	-	4	4	-	-	-	-	2x2P - 2x3P	-	63A	4P 63A	RCBO	27 kW



8 horizontal sockets - plug



## CONSTRUCTION SITE ASSEMBLED DISTRIBUTION BOARD SERIES 690

### MAIN TECHNICAL FEATURES:

- Reference standard: CEI EN 61439-1, CEI EN 61439-4.
- Suggested application: mobile installation.
- Suggested use: construction sites or temporary installations, where only trained people are allowed - ASC Type.
- Supplied with EN 60309 industrial sockets 16/32/63A and Italian/Schuko sockets 10/16A, MCB output protection device 6 kA, main protection device MCB 6/10 kA, rated current 63/80/100A, RCCB protection device 30 mA, or RCBO protection device, cabled emergency push-button, terminal block 4x35 mmq.
- Each piece packed in strong cardboard boxes suitable for transport and storage. Packaging: 1 piece.
- **Different combinations supplied on request.**

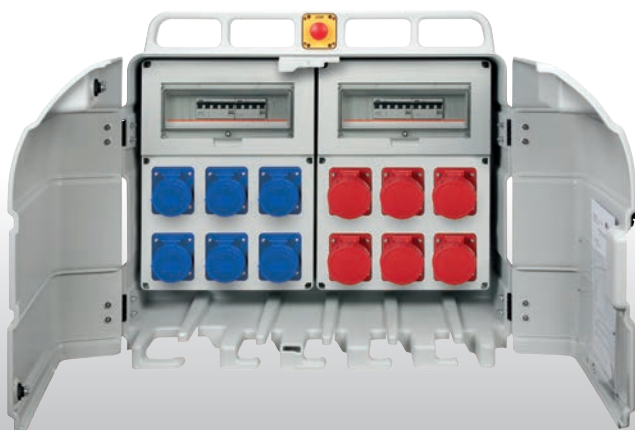
CE

GREY RAL 7011

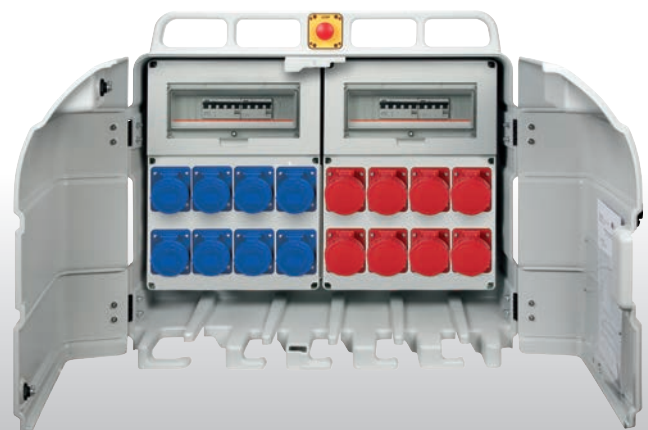
IP65

## Construction site assembled distribution boards ASC type - 11/12/16 industrial sockets MCB protection device 16/32/63A - Terminal block

ITEM	SCHUKO ITALIAN 16A	EN 60309 PANEL MOUNTING SOCKETS								MCB OUTPUT PROTECTION			MCB MAIN PROTECTION DEVICE	RCCB/RCBO 30 mA	MAXIMUM SUPPLIABLE POWER
		16A		32A		63A		16A	32A	63A					
	2P+⊕	2P+⊕ 3P+⊕ 3P+N+⊕	2P+⊕ 3P+⊕ 3P+N+⊕	3P+⊕ 3P+N+⊕											
<b>EC69008A1</b>	4	3 2 - -	- - 1	- 1	5x2P	1x4P	1x4P	4P 100A	4P 100A	62 kW					
<b>EC69008A2</b>	-	6 3 1	- - 2	- -	3x2P	1x4P	-	4P 80A	4P 80A	52 kW					
					3x3P										
<b>EC69008A3</b>	-	12 - -	- - -	- - -	6x2P	-	-	4P 63A	RCBO	41 kW					
<b>EC69008A4</b>	-	6 6 - -	- - -	- - -	3x2P	-	-	4P 80A	4P 80A	52 kW					
					3x3P										
<b>EC69008A5</b>	-	8 8 - -	- - -	- - -	4x2P	-	-	4P 80A	4P 80A	52 kW					
					4x3P										
<b>EC69008A6</b>	-	8 4 4	- - -	- - -	4x2P	-	-	4P 80A	4P 80A	52 kW					
					2x3P										
					2x4P										



EC69008A4



EC69008A5



## ASSEMBLED DISTRIBUTION BOARD FOR LINE PROTECTION **SERIES 690**

### MAIN TECHNICAL FEATURES:

- Reference standard: CEI EN 61439-1, CEI EN 61439-4 - ASC Type.
- Distribution boards completely made of shock resistant technopolymer on ABS base, Halogen free.
- Main protection device MCB 10 kA, rated current 16/32/63/80/100A, RCCB protection device 30 mA.  
To be installed immediately downstream of the delivery point to protect the main power line of the building site towards the general distribution panel when the length of the same exceeds 3 meters.
- In case of supply exceeding 30kW, request the necessary breaking capacity beforehand.
- Recommended entry with cable glands
- The boards for line protection do not require grounding.
- Double insulation with supplied fixing screw caps.
- Security lock with cylinder key, supplied.



GREY RAL 7035

**IP65**

## Assembled distribution board for line protection

ITEM	CURRENT / NOMINAL VOLTAGE	RATED BREAKING CAPACITY	MAXIMUM SUPPLIABLE POWER
<b>EC690PL1</b>	16A - 1P+N - 230V~ - I <sub>dn</sub> : 30 mA	10kA-230V~	3,5 kW
<b>EC690PL2</b>	32A - 1P+N - 230V~ - I <sub>dn</sub> : 30 mA	10kA-230V~	7,0 kW
<b>EC690PL3</b>	16A - 3P+N - 400V~ - I <sub>dn</sub> : 30 mA	10kA-400V~	10,5 kW
<b>EC690PL4</b>	32A - 3P+N - 400V~ - I <sub>dn</sub> : 30 mA	10kA-400V~	21,0 kW
<b>EC690PL5</b>	63A - 3P+N - 400V~ - I <sub>dn</sub> : 30 mA	10kA-400V~	41,0 kW
<b>EC690PL6</b>	80A - 3P+N - 400V~ - I <sub>dn</sub> : 30 mA	10kA-400V~	52,5 kW
<b>EC690PL7</b>	100A - 3P+N - 400V~ - I <sub>dn</sub> : 30 mA	10kA-400V~	65,7 kW

## Assembled distribution board for line protection - with emergency push-button

ITEM	CURRENT / NOMINAL VOLTAGE	RATED BREAKING CAPACITY	MAXIMUM SUPPLIABLE POWER
<b>EC690PL1E</b>	16A - 1P+N - 230V~ - I <sub>dn</sub> : 30 mA	10kA-230V~	3,5 kW
<b>EC690PL2E</b>	32A - 1P+N - 230V~ - I <sub>dn</sub> : 30 mA	10kA-230V~	7,0 kW
<b>EC690PL3E</b>	16A - 3P+N - 400V~ - I <sub>dn</sub> : 30 mA	10kA-400V~	10,5 kW
<b>EC690PL4E</b>	32A - 3P+N - 400V~ - I <sub>dn</sub> : 30 mA	10kA-400V~	21,0 kW
<b>EC690PL5E</b>	63A - 3P+N - 400V~ - I <sub>dn</sub> : 30 mA	10kA-400V~	41,0 kW
<b>EC690PL6E</b>	80A - 3P+N - 400V~ - I <sub>dn</sub> : 30 mA	10kA-400V~	52,5 kW
<b>EC690PL7E</b>	100A - 3P+N - 400V~ - I <sub>dn</sub> : 30 mA	10kA-400V~	65,7 kW



EC690PL6



## ACCESSORY FOR CONSTRUCTION SITE DISTRIBUTION BOARDS **SERIES 690**

### MAIN TECHNICAL FEATURES METALLIC SUPPORT:

- Material: made of powder painted galvanized steel.
- Support for construction site distribution boards series 690.
- Standard colour: black.
- Made of high-resistant metallic tube.



## Metallic support for construction site distribution board

ITEM	DESCRIPTION EXTERNAL DIMENSIONS W x H x D mm	PACKAGING PIECES
<b>EC69008S</b>	For boards series 69008 - 1060x1520x700 - with fixing screws	1

## Pair of spare locks

ITEM	DESCRIPTION EXTERNAL DIMENSIONS W x H x D mm	PACKAGING PIECES
<b>EC69008T</b>	standard key locks	1 PAIR

## Emergency push-button

ITEM	DESCRIPTION EXTERNAL DIMENSIONS W x H x D mm	PACKAGING PIECES
<b>EC69008E</b>	Push-button with contact NO - 75x75x22 - with fixing screws	1

## Pair of wall brackets

ITEM	DESCRIPTION EXTERNAL DIMENSIONS W x H x D mm	PACKAGING PIECES
<b>EC69008P</b>	Galvanized steel - 250x40x3 -with fixing screws	1 PAIR



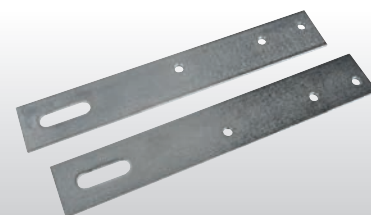
EC69008S



EC69008T



EC69008E



EC69008P



Last name \_\_\_\_\_ Name \_\_\_\_\_  
 Company \_\_\_\_\_ VAT Nr. \_\_\_\_\_  
 Address \_\_\_\_\_  
 Town \_\_\_\_\_ Country \_\_\_\_\_  
 Tel. \_\_\_\_\_ Fax \_\_\_\_\_ e-mail \_\_\_\_\_  
 Date \_\_\_\_\_ Signature \_\_\_\_\_

Please, specify the standard item to be customized: \_\_\_\_\_

**BOARD TYPE:**     ASD-FIXED     ASC-MOBILE     IP44     IP65     WITH EMERGENCY PUSH-BUTTON  
 WITH SUPPORT     WITH SUPPORT AND TOP PROTECTION

**MODULES**    4 MOD. 2 SOCKETS     4 MOD. 3 SOCKETS     8 MOD. 4 SOCKETS     12 MOD. 3 SOCKETS  
**SOCKETS**    12 MOD. 6 SOCKETS     12 MOD. 2 OIWF SOCKETS     12 MOD. 4 OIWF SOCKETS     12 MOD. 2 VIWF SOCKETS  
 19 MOD. 8 SOCKETS     19 MOD. 4 OIWF SOCKETS     19 MOD. 3 VIWF SOCKETS  
 CONSTRUCTION SITE 5 VIWF SOKETS     CONSTRUCTION SITE 6 VIWF SOKETS     CONSTRUCTION SITE 12 FIXED SOKETS  
 CONSTRUCTION SITE 6 OIWF SOKETS     CONSTRUCTION SITE 8 OIWF SOKETS     CONSTRUCTION SITE 8 OIWF SOKETS

OIWF = horizontal interlocked without fuse holder socket - OIWF = horizontal interlocked with fuse holder socket

VIWF = vertical interlocked without fuse holder socket - VIWF = vertical interlocked with fuse holder socket

**SUPPLY:**     PLUG 3P+N+T     16A     32A     63A     DIRECTLY     TERMINAL POWER

SOCKETS	TYPE AND POLES	Voltage	16A - Number:	32A - Number:	63A - Number
	2P+E - P30	220V~		X	X
	2P    EN 60309	24V ~			
	2P+E    EN 60309	220V~			
	3P+E    EN 60309	380V ~			
	3P+N+E    EN 60309	380V~			

**TYPE OF SOCKETS**

Panel mounting	<input type="checkbox"/>	<input type="checkbox"/>	<input type="checkbox"/>
Interlocked without fuse holder	<input type="checkbox"/>	<input type="checkbox"/>	<input type="checkbox"/>
Interlocked with fuse holder	<input type="checkbox"/>	<input type="checkbox"/>	<input type="checkbox"/>

**CORRESPONDING MCB PROTECTION:**

MCB (6 KA) Number and type	<input type="checkbox"/>	<input type="checkbox"/>	<input type="checkbox"/>
	<input type="checkbox"/>	<input type="checkbox"/>	<input type="checkbox"/>

**CHOICE OF PROTECTION:**

RCCB	<input type="checkbox"/>	MCB	<input type="checkbox"/>
Specify characteristics:			

**OTHER:** \_\_\_\_\_

\_\_\_\_\_

\_\_\_\_\_

\_\_\_\_\_

## CHOICE TABLE FOR BLANK/PRE-CUT-FLANGED BOARDS

SOCKET TYPE									
VOLTAGE IP DEGREE									
RATED CURRENT		16A 32A	16A 32A	16A 32A	16A 32A 63A	16A 32A 63A	16A 32A 63A	16A 32A 63A	16A 32A 63A
TYPE BLANK PRE-CUT	ITEM MODULES SOCKETS	2P 2P+⊕	3P+⊕ 3P+N+⊕	2P+⊕	3P+⊕ 3P+N+⊕	2P+⊕	3P+⊕ 3P+N+⊕	2P+⊕	3P+⊕ 3P+N+⊕
	<b>EC69001</b> <b>EC69011</b> 4 MODULES 2 SOCKETS	OK	OK	OK	OK	NO	NO	NO	NO
	<b>EC69002</b> <b>EC69012</b> 4 MODULES 3 SOCKETS	OK	OK	OK	OK	NO	NO	NO	NO
	<b>EC69003</b> <b>EC69013</b> 8 MODULES 4 SOCKETS	OK	OK	OK	OK	NO	NO	NO	NO
	<b>EC69004</b> <b>EC69014</b> 12 MODULES 3 SOCKETS	OK	OK	OK	OK	NO	NO	NO	NO
	<b>EC69005</b> <b>EC69015</b> 12 MODULES 6 SOCKETS	OK	OK	OK	OK	NO	NO	NO	NO
	<b>EC69006</b> <b>EC69016</b> 19 MODULES 8 SOCKETS	OK	OK	OK	OK	NO	NO	NO	NO
FLANGED 	<b>EC69045</b> 12 MODULES 2 SOCKETS	NO	NO	NO	NO	OK	OK	OK	OK
FLANGED 	<b>EC69046</b> 19 MODULES 3 SOCKETS	NO	NO	NO	NO	OK	OK	OK	OK

## CHOICE TABLE FOR FLANGED BOARD

SOCKET TYPE										
VOLTAGE IP DEGREE										
RATED CURRENT		16A	16A	16A	16A	16A	16A	16A 32A	16A	16A 32A
TYPE FLANGED	ITEM MODULES SOCKETS	2P+⊕	2P 2P+⊕	3P+⊕ 3P+N+⊕	2P+⊕	3P+⊕ 3P+N+⊕	2P+⊕	3P+⊕ 3P+N+⊕	2P+⊕	3P+⊕ 3P+N+⊕
	<b>EC69021</b> 4 MODULES 2 SOCKETS	OK	OK	OK	OK	OK	NO	NO	NO	NO
	<b>EC69022</b> 4 MODULES 3 SOCKETS	OK	OK	OK	OK	OK	NO	NO	NO	NO
	<b>EC69023</b> 8 MODULES 4 SOCKETS	OK	OK	OK	OK	OK	NO	NO	NO	NO
	<b>EC69024</b> 12 MODULES 3 SOCKETS	OK	OK	OK	OK	OK	NO	NO	NO	NO
	<b>EC69025</b> 12 MODULES 6 SOCKETS	OK	OK	OK	OK	OK	NO	NO	NO	NO
	<b>EC69026</b> 19 MODULES 8 SOCKETS	OK	OK	OK	OK	OK	NO	NO	NO	NO
	<b>EC69034</b> 12 MODULES 2 SOCKETS	NO	NO	NO	NO	NO	NO	NO	OK	OK
	<b>EC69035</b> 12 MODULES 4 SOCKETS	NO	NO	NO	NO	NO	NO	NO	OK	OK
	<b>EC69036</b> 19 MODULES 4 SOCKETS	NO	NO	NO	NO	NO	OK	OK	NO	NO