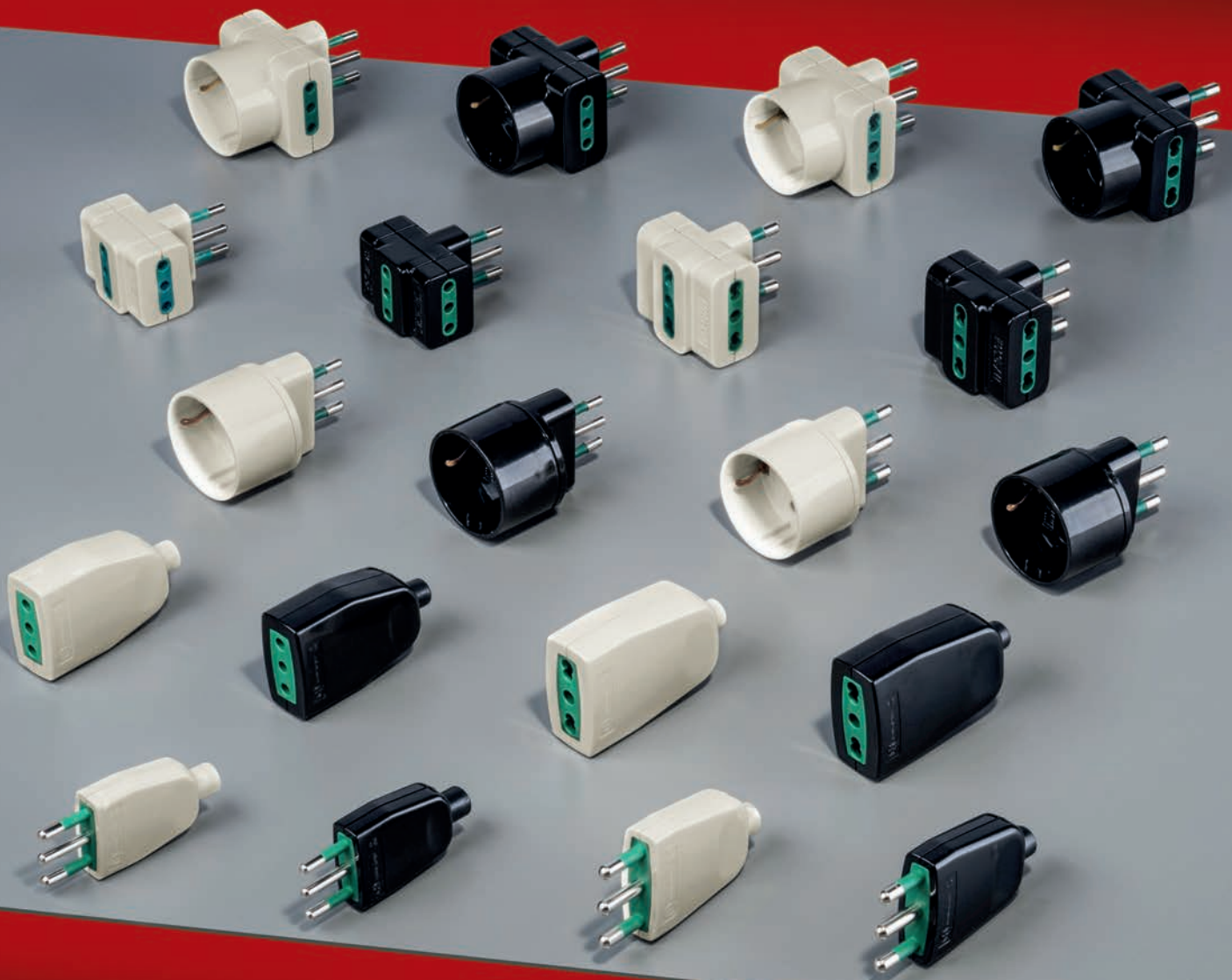


PLUGS AND SOCKETS - ADAPTERS FOR DOMESTIC USE



PLUGS AND SOCKETS SERIES K33 - single Flow Pack

MAIN TECHNICAL FEATURES:

- Material: self-extinguishing V0 (UL94) technopolymer, with high resistant to UV rays.
- Plugs with nickel-plated brass pins protected by insulation.
- Sockets protected against accidental contacts.
- Soft cable entry of soft and screw cable clamp system.
- Nominal voltage 250V~ - 50 Hz, rated current 10 - 16A.
- Resistance to abnormal heat: up to 750° C (Glow Wire Test, Reference Standard IEC 60695-2-11).
- Operating temperature: minimum -15°, maximum +35° C.
- Reference standard: CEI 23-50
- Products in compliance with RoHS II - 2011/65/UE directive. Single flow pack - European hole type.



IP20

WHITE RAL 9010

BLACK RAL 9011

Plugs - axial outlet

ITEM	COLOUR	DESCRIPTION	PACKAGING NR. FLOW PACK
ECK33601	□	Plug 10A 2P+T - S11	100
ECK33611	■	Plug 10A 2P+T - S11	100
ECK33603	□	Plug 16A 2P+T - S17	50
ECK33613	■	Plug 16A 2P+T - S17	50

Sockets - axial outlet

ITEM	COLOUR	DESCRIPTION	PACKAGING NR. FLOW PACK
ECK33602	□	Socket 10A 2P+T - P11	100
ECK33612	■	Socket 10A 2P+T - P11	100
ECK33604	□	Socket 10/16A 2P+T - P17-11	50
ECK33614	■	Socket 10/16A 2P+T - P17-11	50



ECK33601

ECK33611

ECK33603

ECK33613

ECK33602

ECK33612

ECK33604

ECK33614

ADAPTERS SERIES K33 - single Flow Pack

MAIN TECHNICAL FEATURES:

- Material: self-extinguishing V0 (UL94) technopolymer, with high resistant to UV rays.
- Plugs with nickel-plated brass pins protected by insulation.
- Sockets protected against accidental contacts.
- Nominal voltage 250V~ - 50 Hz, rated current 10 - 16A.
- Resistance to abnormal heat: up to 750° C (Glow Wire Test, Reference Standard IEC 60695-2-11).
- Operating temperature: minimum -15°, maximum +35° C.
- Reference standard: CEI 23-50
- Products in compliance with RoHS II - 2011/65/UE directive. Single flow pack - European hole type.



WHITE RAL 9010

BLACK RAL 9011

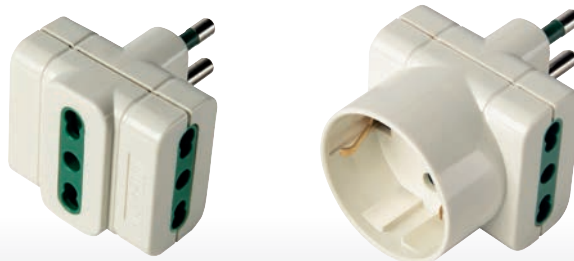
IP20

3-way adapters

ITEM	COLOUR	DESCRIPTION	PACKAGING NR. FLOW PACK
ECK33605	□	Plug 10A 2P+T - 3 Sockets 10A 2P+T - S11-P11	100
ECK33615	■	Plug 10A 2P+T - 3 Sockets 10A 2P+T - S11-P11	100
ECK33606	□	Plug 16A 2P+T - 3 Sockets 10/16A 2P+T - S17-P17/11	50
ECK33616	■	Plug 16A 2P+T - 3 Sockets 10/16A 2P+T - S17-P17/11	50

3-way systems adapters - plug 10 -16A / 2 sockets + SCHUKO

ITEM	COLOUR	DESCRIPTION	PACKAGING NR. FLOW PACK
ECK33607	□	Plug 10A 2P+T - 2 Sockets 10A 2P+T + SCHUKO 16A - S11-P11-30	100
ECK33617	■	Plug 10A 2P+T - 2 Sockets 10A 2P+T + SCHUKO 16A - S11-P11-30	100
ECK33608	□	Plug 16A 2P+T - 2 Sockets 10/16A 2P+T + SCHUKO 16A - S17-P17/11-30	50
ECK33618	■	Plug 16A 2P+T - 2 Sockets 10/16A 2P+T + SCHUKO 16A - S17-P17/11-30	50



ECK33605

ECK33615

ECK33606

ECK33616

ECK33607

ECK33617

ECK33608

ECK33618

SYSTEM ADAPTERS SERIES K33 - single Flow Pac



MAIN TECHNICAL FEATURES:

- Material: self-extinguishing V0 (UL94) technopolymer, with high resistant to UV rays.
- Plugs with nickel-plated brass pins protected by insulation.
- Sockets protected against accidental contacts.
- Nominal voltage 250V~ - 50 Hz, rated current 10 - 16A.
- Resistance to abnormal heat: up to 750° C (Glow Wire Test, Reference Standard IEC 60695-2-11).
- Operating temperature: minimum -15°, maximum +35° C.
- Reference standard: CEI 23-50
- Products in compliance with RoHS II - 2011/65/UE directive. Single flow pack - European hole type.

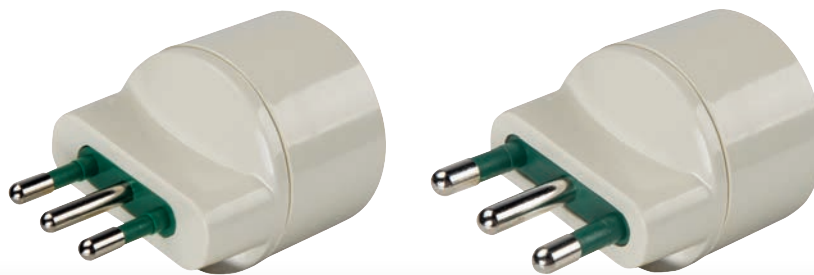
IP20

WHITE RAL 9010

BLACK RAL 9011

System adaptors - plug 10 -16A / socket SCHUKO

ITEM	COLOUR	DESCRIPTION	PACKAGING NR. FLOW PACK
ECK33609	□	Plug 10A 2P+T - Socket SCHUKO 16A 2P+T - S11-P30	100
ECK33619	■	Plug 10A 2P+T - Socket SCHUKO 16A 2P+T - S11-P30	100
ECK33610	□	Plug 16A 2P+T - Socket SCHUKO 16A 2P+T - S17-P30	50
ECK33620	■	Plug 16A 2P+T - Socket SCHUKO 16A 2P+T - S17-P30	50



ECK33609

ECK33619

ECK33610

ECK33620

CABLE REELS



MAIN TECHNICAL FEATURES

Material: made of shock resistant thermoresistant technopolymer, high resistant to UV rays.

Standard colour: grey RAL 7035, black.

Shock resistance: IK08 (up to 6J).

Resistance to abnormal heat: up to 750°-850°C (Glow Wire Test, Reference Standard IEC 695-2-1).

Application temperature domestic type: minimum -5°, maximum +40°.

Application temperature industrial type: minimum -25°, maximum +40°, maximum operating temperature: +60°C.

Rated voltage 230/400V~ - 50Hz - Insulation voltage 500/690V~.

Rated current 10/16/32A, with thermal circuit breaker >55°C restorable.

Maximum power with rolled/extended cable on each model.

Equipped with handle for rewinding.

Reference standards: IEC EN 61242, IEC EN 61316, IEC 60884-1, IEC 60884-2, CEI 23-50 - I Ed. 1998 + V1:2002.

Products meeting the essential requirements of L.V.D. 2014/35/UE.

Products in compliance with RoHS II - 2011/65/UE directive.



Domestic cable reel Series K22
Series K22
page 216



Domestic cable reel with metallic
support Series K22
page 216



Domestic cable reel and garden
extensions Series K22
page 217



Industrial cable reel 2 EN 60309
sockets with fixed metallic
support Series 699
page 218



Industrial cable reel 4 EN 60309
sockets with fixed metallic
support Series 699
page 220



Industrial cable reel 4 EN 60309
sockets with mobile metallic
support Series 699
page 222



Industrial extensions with EN
60309 plug and socket Series 699
page 225

MAIN TECHNICAL FEATURES

Available power with rolled or extended cable (indicated on each model)

Double insulated H07RN-F cable with blocking clamp

Shock resistance IK08: suitable for heavy installations

Handle for rewinding



Domestic cable reels equipped with sockets protected against accidental contacts

Strong and functional single-piece drum

On all domestic and industrial models there is the thermal circuit breaker, which interrupts power supply in case of overload

High-quality cable resistant to wear

The domestic cable reel ECK22, made up of UV-resistant self-extinguishing tchnopolymer, are equipped with cable H05VV F3-G1-1, 5 in accordance with CEI 23-50-I Ed. 1998 + V1 2002 with plugs firmly fixed to the cable through nickel-plated and protected plugs. They are characterized by sockets protected against accidental contacts, base and handle for rewinding. The industrial cable reels are built with a double insulated H07RN-F cable, IP44/IP67 EN60309 plugs.

The painted and galvanized steel metal support has got a a soft antislip rubber handle, automatic internal drum brake and cable clamp.

All reels are wired with resettable thermal circuit breaker that, acting under the Joule effect in close contact with the cable, interrupts the power supply if the cable temperature exceeds 55 °C

The circuit breaker is not a cut-off switch, so it doesn't protect against short circuits and overloads and all operations are to be performed after having disconnected the upstream

circuit with appropriate control equipments.

When in use carefully unroll the cable entirely, check the absence of any damages or cracks, and periodically control the continuity of the phase and protection conductors.

Prevent the cable from being crushed abnormal loads such as vehicles, trailers and similar and rewind the cable after the use, which must always be temporary. Do not use the cable reels in environments with a risk of fire or explosion.

mounting examples



DOMESTIC CABLE REEL SERIES K22

MAIN TECHNICAL FEATURES:

- Cable reel with plug firmly fixed to the cable type S17 16A.
- Rated voltage 250V~ - 50Hz - Insulation voltage 500V~.
- Sockets with protected poles against accidental contact.
- Thermal circuit breaker >55°C restorable.
- For supply of equipment in Class I or II.
- Equipped with handle for rewinding.
- Products complying with the Standards IEC 60884-1, IEC 60884-2-5, EN 61242.

CE

IP20

Domestic cable reel plug 16A 2P+⊕ S17 - Italian and multistandard sockets

ITEM	INSTALLED SOCKETS 10/16A 2P+⊕	PLUG 16A	IP	CABLE MT	POWER kW ROLLED/ EXTENDED CABLE	PACKAGING PIECES
ECK22101	2	S17 - 2P+⊕	20	5 - 3x1,5	1,1 - 3,0 kW	1/10
ECK22102	4	S17 - 2P+⊕	20	10 - 3x1,5	1,1 - 3,0 kW	1/10
ECK22103	4	S17 - 2P+⊕	20	20 - 3x1,5	1,1 - 3,0 kW	1/10

Domestic cable reel plug 16A 2P+⊕ S17 - Italian and multistandard sockets - ø 185 mm

ITEM	INSTALLED SOCKETS 10/16A 2P+⊕	PLUG 16A	IP	CABLE MT	POWER kW ROLLED/ EXTENDED CABLE	PACKAGING PIECES
ECK22104	4	S17 - 2P+⊕	20	15 - 3x1,5	1,1 - 3,0 kW	1/4

Domestic cable reel plug 16A 2P+⊕ S17 - Italian and multistandard sockets - ø 240 mm

ITEM	INSTALLED SOCKETS 10/16A 2P+⊕	PLUG 16A	IP	CABLE MT	POWER kW ROLLED/ EXTENDED CABLE	PACKAGING PIECES
ECK22105	4	S17 - 2P+⊕	20	25 - 3x1,5	1,1 - 3,0 kW	1/2

Domestic cable reel plug 16A 2P+⊕ S17 - Italian and multistandard sockets - ø 285 mm

ITEM	INSTALLED SOCKETS 10/16A 2P+⊕	PLUG 16A	IP	CABLE MT	POWER kW ROLLED/ EXTENDED CABLE	PACKAGING PIECES
ECK22106	4	S17 - 2P+⊕	20	50 - 3x1,5	1,1 - 3,0 kW	1/2



ECK22101



ECK22102



ECK22104



ECK22105



ECK22106

■ DOMESTIC CABLE REEL AND GARDEN EXTENSIONS **SERIES K22**

MAIN TECHNICAL FEATURES:

- Cable reel with plug firmly fixed to the cable type S17 16A.
- Rated voltage 250V~ - 50Hz - Insulation voltage 500V~.
- Sockets with protected poles against accidental contact.
- Thermal circuit breaker >55°C restorable.
- For supply of equipment in Class I or II.
- Equipped with handle for rewinding.
- Products complying with the Standards IEC 60884-1, IEC 60884-2-5, EN 61242.

CE
IP20

■ Garden cable reel plug 16A 2P+⊕ S31 schuko socket 16A 2P+⊕ P30 schuko - Ø 300mm

ITEM	 10/16A 2P+⊕	INSTALLED SOCKETS		PLUG 16A	IP	CABLE MT	POWER kW ROLLED/ EXTENDED CABLE	PACKAGING PIECES
		 10/16A 2P+⊕	 16A 2P+⊕					
ECK22310			1	S31 - 2P+⊕	20	20 - 3x1,5	1,0 - 3,0 kW	1
ECK22311			1	S31 - 2P+⊕	20	30 - 3x1,5	1,0 - 3,0 kW	1

■ Garden extensions plug and socket 16A 2P schuko

ITEM	 10/16A 2P+⊕	INSTALLED SOCKETS		PLUG 16A	IP	CABLE MT	POWER kW ROLLED/ EXTENDED CABLE	PACKAGING PIECES
		 10/16A 2P+⊕	 16A 2P					
ECK22422			1	S16- 2P	20	20 - 2x1,5	1,0 - 3,0 kW	1
ECK22426			1	S16- 2P	20	40 - 2x1,5	1,0 - 3,0 kW	1


ECK22310

ECK22422

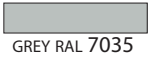
INDUSTRIAL CABLE REELS SERIES 699

MAIN TECHNICAL FEATURES:

- Cable reel with galvanized and painted galvanized metallic support.
- Rated voltage 230/400V~ - 50Hz - Insulation voltage 500/690V~.
- Drum with internal automatic brake system and cable blocking clamp.
- Thermal circuit breaker >55°C restorable.
- Cable H07NRF - double insulation HAR or H05VV-F or H05VV-F.
- Equipped with handle for rewinding.
- Products complying with the Standards EN 61242, EN 61316.



IP44



Empty cable reels with support

ITEM	DESCRIPTION	INSTALLABLE SOCKETS	DRUM DIAMETER DIMENSIONS W x H x D mm	PACKAGING PIECES
EC69901	Empty cable reel	2 sockets	330 mm - 255x335x400	1
EC69903	Empty cable reel	4 sockets	400 mm - 255x430x520	1
EC69905	Empty cable reel- with wheels	4 sockets	400 mm - 375x475x800	1

Industrial cable reel 2 sockets - cable H07RN-F - Ø 330 mm - 255x235x400 mm

ITEM	INSTALLED SOCKETS				PLUG EN 60309 16A	IP	CABLE MT	POWER kW ROLLED/ EXTENDED CABLE H07RN-F	PACKAGING PIECES
	10/16A 2P+⊕	16A 2P+⊕							
EC6992020	2			Schuko / Italian	2P+⊕	44	30 - 3x2,5	1,8 - 3,6 kW	1
EC6992020L	2			Schuko / Italian	2P+⊕	44	40 - 3x2,5	1,5 - 3,6 kW	1
EC6992025		2		French	2P+⊕	44	30 - 3x2,5	1,8 - 3,6 kW	1
EC6992025L		2		French	2P+⊕	44	40 - 3x2,5	1,5 - 3,6 kW	1

Industrial cable reel 2 sockets 16A EN 60309 - cable H05VV-F - Ø 330 mm - 255x235x400 mm

ITEM	INSTALLED SOCKETS				PLUG EN 60309 16A	IP	CABLE MT	POWER kW ROLLED/ EXTENDED CABLE H05VV-F	PACKAGING PIECES
	EN 309 2P+⊕	EN 309 3P+⊕	EN 309 3P+N+⊕	SCHUKO ITALIAN					
EC6992021	2	-	-	-	2P+⊕	44	30 - 3x1,5	1,5 - 3,6 kW	1
EC6992021L	2	-	-	-	2P+⊕	44	40 - 3x1,5	1,5 - 3,6 kW	1
EC6992021XL	2	-	-	-	2P+⊕	44	50 - 3x1,5	1,5 - 3,6 kW	1
EC6992022	1	-	-	1	2P+⊕	44	30 - 3x1,5	1,5 - 3,6 kW	1
EC6992022L	1	-	-	1	2P+⊕	44	40 - 3x1,5	1,5 - 3,6 kW	1
EC6992022XL	1	-	-	1	2P+⊕	44	50 - 3x1,5	1,5 - 3,6 kW	1



EC69901

EC69903

EC69905

EC6992020

EC6992021

INDUSTRIAL CABLE REELS SERIES 699

MAIN TECHNICAL FEATURES:

- Cable reel with galvanized and painted galvanized metallic support, equipped with handle for rewinding.
- Rated voltage 230/400V~ - 50Hz - Insulation voltage 500/690V~.
- Drum with internal automatic brake system and cable blocking clamp.
- Thermal circuit breaker >55°C restorable.
- Cable H07NRF - double insulation HAR.
- Products complying with the Standards EN 61242, EN 61316
- Each piece packed in strong cardboard boxes suitable for transport and storage.
- Dimensions 255x335x400 mm.
- **Different combinations supplied on request.**

IP44
IP55
CE

GREY RAL 7035

Industrial cable reel plug 2 sockets EN 60309 16A - Ø 330 mm

ITEM	INSTALLED SOCKETS				PLUG EN 60309 16A	IP	CABLE MT	POWER KW ROLLED/ EXTENDED CABLE	PACKAGING PIECES
	EN 309 2P+⊕	EN 309 3P+⊕	EN 309 3P+N+⊕	SCHUKO ITALIAN					
EC6992120	1	1	-	-	3P+N+⊕	44	20 - 5x2,5	5,0 - 11,0 kW	1
EC6992121	2	-	-	-	2P+⊕	44	30 - 3x2,5	1,8 - 3,6 kW	1
EC6992121L	2	-	-	-	2P+⊕	44	40 - 3x2,5	1,5 - 3,6 kW	1
EC6992122	1	-	-	1	2P+⊕	44	30 - 3x2,5	1,8 - 3,6 kW	1
EC6992122L	1	-	-	1	2P+⊕	44	40 - 3x2,5	1,5 - 3,6 kW	1
EC6992124	-	2	-	-	3P+⊕	44	30 - 4x2,5	4,5 - 11,0 kW	1
EC6992124L	-	2	-	-	3P+⊕	44	40 - 4x2,5	4,0 - 11,0 kW	1
EC6992125	-	-	2	-	3P+N+⊕	44	20 - 5x2,5	5,0 - 11,0 kW	1
EC6992126	1	-	1	-	3P+N+⊕	44	20 - 5x2,5	5,0 - 11,0 kW	1
EC6992130	1	1	-	-	3P+N+⊕	55	20 - 5x2,5	5,0 - 11,0 kW	1
EC6992131	2	-	-	-	2P+⊕	55	30 - 3x2,5	1,8 - 3,6 kW	1
EC6992131L	2	-	-	-	2P+⊕	55	40 - 3x2,5	1,5 - 3,6 kW	1
EC6992134	-	2	-	-	3P+⊕	55	30 - 4x2,5	4,5 - 11,0 kW	1
EC6992134L	-	2	-	-	3P+⊕	55	40 - 4x2,5	4,0 - 11,0 kW	1
EC6992135	-	-	2	-	3P+N+⊕	55	20 - 5x2,5	5,0 - 11,0 kW	1
EC6992136	1	-	1	-	3P+N+⊕	55	20 - 5x2,5	5,0 - 11,0 kW	1


EC6992120

EC6992135

INDUSTRIAL CABLE REELS SERIES 699

MAIN TECHNICAL FEATURES:

- Cable reel with galvanized and painted galvanized metallic support, equipped with handle for rewinding.
- Rated voltage 230/400V~ - 50Hz - Insulation voltage 500/690V~.
- Drum with internal automatic brake system and cable blocking clamp.
- Thermal circuit breaker >55°C restorable.
- Cable H07NRF - double insulation HAR.
- Products complying with the Standards EN 61242, EN 61316
- Each piece packed in strong cardboard boxes suitable for transport and storage.
- Dimensions 255x430x520 mm.
- **Different combinations supplied on request.**

IP44
IP55

CE

GREY RAL 7035

Industrial cable reel plug 4 sockets EN 60309 16A - Ø 400 mm - 30 MT cable

ITEM	INSTALLED SOCKETS			PLUG EN 60309 16A	IP	CABLE MT	POWER kW ROLLED/ EXTENDED CABLE	PACKAGING PIECES
	EN 309 2P+⊕	EN 309 3P+⊕	EN 309 3P+N+⊕					
EC6992320	2	2	-	3P+N+⊕	44	30 - 5x2,5	5,0 - 11,0 kW	1
EC6992324	4	-	-	2P+⊕	44	30 - 3x2,5	1,8 - 3,6 kW	1
EC6992325	-	4	-	3P+⊕	44	30 - 4x2,5	4,5 - 11,0 kW	1
EC6992326	-	-	4	3P+N+⊕	44	30 - 5x2,5	5,0 - 11,0 kW	1
EC6992327	2	-	2	3P+N+⊕	44	30 - 5x2,5	5,0 - 11,0 kW	1
EC6992328	3	1	-	3P+N+⊕	44	30 - 5x2,5	5,0 - 11,0 kW	1
EC6992329	3	-	1	3P+N+⊕	44	30 - 5x2,5	5,0 - 11,0 kW	1
EC6992330	2	2	-	3P+N+⊕	55	30 - 5x2,5	5,0 - 11,0 kW	1
EC6992334	4	-	-	2P+⊕	55	30 - 3x2,5	1,8 - 3,6 kW	1
EC6992335	-	4	-	3P+⊕	55	30 - 4x2,5	4,5 - 11,0 kW	1
EC6992336	-	-	4	3P+N+⊕	55	30 - 5x2,5	5,0 - 11,0 kW	1
EC6992337	2	-	2	3P+N+⊕	55	30 - 5x2,5	5,0 - 11,0 kW	1
EC6992338	3	1	-	3P+N+⊕	55	30 - 5x2,5	5,0 - 11,0 kW	1
EC6992339	3	-	1	3P+N+⊕	55	30 - 5x2,5	5,0 - 11,0 kW	1



EC6992334

INDUSTRIAL CABLE REELS SERIES 699

MAIN TECHNICAL FEATURES:

- Cable reel with galvanized and painted galvanized metallic support, equipped with handle for rewinding.
- Rated voltage 230/400V~ - 50Hz - Insulation voltage 500/690V~.
- Drum with internal automatic brake system and cable blocking clamp.
- Thermal circuit breaker >55°C restorable.
- Cable H07NRF - double insulation HAR.
- Products complying with the Standards EN 61242, EN 61316
- Each piece packed in strong cardboard boxes suitable for transport and storage.
- Dimensions 255x430x520 mm.
- **Different combinations supplied on request.**

IP44
IP55
CE

GREY RAL 7035

Industrial cable reel plug 4 sockets EN 60309 16A - Ø 400 mm - 50 MT cable

ITEM	INSTALLED SOCKETS			PLUG EN 60309 16A	IP	CABLE MT	POWER kW ROLLED/ EXTENDED CABLE	PACKAGING PIECES
	EN 309 2P+⊕	EN 309 3P+⊕	EN 309 3P+N+⊕					
EC6992320L	2	2	-	3P+N+⊕	44	50 - 5x2,5	4,0 - 11,0 kW	1
EC6992324L	4	-	-	2P+⊕	44	50 - 3x2,5	1,6 - 3,6 kW	1
EC6992325L	-	4	-	3P+⊕	44	50 - 4x2,5	4,0 - 11,0 kW	1
EC6992326L	-	-	4	3P+N+⊕	44	50 - 5x2,5	4,0 - 11,0 kW	1
EC6992327L	2	-	2	3P+N+⊕	44	50 - 5x2,5	4,0 - 11,0 kW	1
EC6992328L	3	1	-	3P+N+⊕	44	50 - 5x2,5	4,0 - 11,0 kW	1
EC6992329L	3	-	1	3P+N+⊕	44	50 - 5x2,5	4,0 - 11,0 kW	1
EC6992330L	2	2	-	3P+N+⊕	55	50 - 5x2,5	4,0 - 11,0 kW	1
EC6992334L	4	-	-	2P+⊕	55	50 - 3x2,5	1,6 - 3,6 kW	1
EC6992335L	-	4	-	3P+⊕	55	50 - 4x2,5	4,0 - 11,0 kW	1
EC6992336L	-	-	4	3P+N+⊕	55	50 - 5x2,5	4,0 - 11,0 kW	1
EC6992337L	2	-	2	3P+N+⊕	55	50 - 5x2,5	4,0 - 11,0 kW	1
EC6992338L	3	1	-	3P+N+⊕	55	50 - 5x2,5	4,0 - 11,0 kW	1
EC6992339L	3	-	1	3P+N+⊕	55	50 - 5x2,5	4,0 - 11,0 kW	1


EC6992320L

MOBILE INDUSTRIAL CABLE REELS SERIES 699

MAIN TECHNICAL FEATURES:

- Cable reel with galvanized and painted galvanized metallic support, equipped with handle for rewinding.
- Rated voltage 230/400V~ - 50Hz - Insulation voltage 500/690V~.
- Drum with internal automatic brake system and cable blocking clamp.
- Thermal circuit breaker >55°C restorable.
- Cable H07NRF - double insulation HAR.
- Products complying with the Standards EN 61242, EN 61316
- Each piece packed in strong cardboard boxes suitable for transport and storage.
- Dimensions 375x475x800 mm.
- **Different combinations supplied on request.**

IP44

IP55

CE

GREY RAL 7035

Mobile industrial cable reel plug 4 sockets EN 60309 16A - Ø 400 mm - 30 MT cable

ITEM	INSTALLED SOCKETS			PLUG EN 60309 16A	IP	CABLE MT	POWER kW ROLLED/ EXTENDED CABLE	PACKAGING PIECES
	EN 309 2P+⊕	EN 309 3P+⊕	EN 309 3P+N+⊕					
EC6992320M	2	2	-	3P+N+⊕	44	30 - 5x2,5	5,0 - 11,0 kW	1
EC6992324M	4	-	-	2P+⊕	44	30 - 3x2,5	1,8 - 3,6 kW	1
EC6992325M	-	4	-	3P+⊕	44	30 - 4x2,5	4,5 - 11,0 kW	1
EC6992326M	-	-	4	3P+N+⊕	44	30 - 5x2,5	5,0 - 11,0 kW	1
EC6992327M	2	-	2	3P+N+⊕	44	30 - 5x2,5	5,0 - 11,0 kW	1
EC6992328M	3	1	-	3P+N+⊕	44	30 - 5x2,5	5,0 - 11,0 kW	1
EC6992329M	3	-	1	3P+N+⊕	44	30 - 5x2,5	5,0 - 11,0 kW	1
EC6992330M	2	2	-	3P+N+⊕	55	30 - 5x2,5	5,0 - 11,0 kW	1
EC6992334M	4	-	-	2P+⊕	55	30 - 3x2,5	1,8 - 3,6 kW	1
EC6992335M	-	4	-	3P+⊕	55	30 - 4x2,5	4,5 - 11,0 kW	1
EC6992336M	-	-	4	3P+N+⊕	55	30 - 5x2,5	5,0 - 11,0 kW	1
EC6992337M	2	-	2	3P+N+⊕	55	30 - 5x2,5	5,0 - 11,0 kW	1
EC6992338M	3	1	-	3P+N+⊕	55	30 - 5x2,5	5,0 - 11,0 kW	1
EC6992339M	3	-	1	3P+N+⊕	55	30 - 5x2,5	5,0 - 11,0 kW	1



EC6992324M

MOBILE INDUSTRIAL CABLE REELS SERIES 699

MAIN TECHNICAL FEATURES:

- Cable reel with galvanized and painted galvanized metallic support, equipped with handle for rewinding.
- Rated voltage 230/400V~ - 50Hz - Insulation voltage 500/690V~.
- Drum with internal automatic brake system and cable blocking clamp.
- Thermal circuit breaker >55°C restorable.
- Cable H07NRF - double insulation HAR.
- Products complying with the Standards EN 61242, EN 61316.
- Each piece packed in strong cardboard boxes suitable for transport and storage.
- Dimensions 375x475x800 mm.
- **Different combinations supplied on request.**

IP44
IP55
CE

GREY RAL 7035

Mobile industrial cable reel plug 4 sockets EN 60309 16A - Ø 400 mm - 50 MT cable

ITEM	INSTALLED SOCKETS			PLUG EN 60309 16A	IP	CABLE MT	POWER kW ROLLED/ EXTENDED CABLE	PACKAGING PIECES
	EN 309 2P+⊕	EN 309 3P+⊕	EN 309 3P+N+⊕					
EC6992320LM	2	2	-	3P+N+⊕	44	50 - 5x2,5	4,0 - 11,0 kW	1
EC6992324LM	4	-	-	2P+⊕	44	50 - 3x2,5	1,6 - 3,6 kW	1
EC6992325LM	-	4	-	3P+⊕	44	50 - 4x2,5	4,0 - 11,0 kW	1
EC6992326LM	-	-	4	3P+N+⊕	44	50 - 5x2,5	4,0 - 11,0 kW	1
EC6992327LM	2	-	2	3P+N+⊕	44	50 - 5x2,5	4,0 - 11,0 kW	1
EC6992328LM	3	1	-	3P+N+⊕	44	50 - 5x2,5	4,0 - 11,0 kW	1
EC6992329LM	3	-	1	3P+N+⊕	44	50 - 5x2,5	4,0 - 11,0 kW	1
EC6992330LM	2	2	-	3P+N+⊕	55	50 - 5x2,5	4,0 - 11,0 kW	1
EC6992334LM	4	-	-	2P+⊕	55	50 - 3x2,5	1,6 - 3,6 kW	1
EC6992335LM	-	4	-	3P+⊕	55	50 - 4x2,5	4,0 - 11,0 kW	1
EC6992336LM	-	-	4	3P+N+⊕	55	50 - 5x2,5	4,0 - 11,0 kW	1
EC6992337LM	2	-	2	3P+N+⊕	55	50 - 5x2,5	4,0 - 11,0 kW	1
EC6992338LM	3	1	-	3P+N+⊕	55	50 - 5x2,5	4,0 - 11,0 kW	1
EC6992339LM	3	-	1	3P+N+⊕	55	50 - 5x2,5	4,0 - 11,0 kW	1


EC6992324LM

INDUSTRIAL CABLE REELS SERIES 699

MAIN TECHNICAL FEATURES:

- Cable reel with galvanized and painted galvanized metallic support, equipped with handle for rewinding.
- Rated voltage 230/400V~ - 50Hz - Insulation voltage 500/690V~.
- Drum with internal automatic brake system and cable blocking clamp.
- Thermal circuit breaker >55°C restorable - Cable H07NRF - double insulation HAR.
- Products complying with the Standards EN 61242, EN 61316.
- Each piece packed in strong cardboard boxes suitable for transport and storage.
- Dimensions 255x430x520 mm.
- **Different combinations supplied on request.**

CE

IP55

GREY RAL 7035

Industrial cable reel plug 1 interlocked socket without fuse holder EN 60309 16A - Ø 400 mm - 30 MT cable

ITEM	INSTALLED SOCKETS			PLUG EN 60309 16A	IP	CABLE MT	POWER kW ROLLED/ EXTENDED CABLE	PACKAGING PIECES
	EN 309 2P+⊕	EN 309 3P+⊕	EN 309 3P+N+⊕					
EC69991	1	-	-	2P+⊕	55	30 - 3x2,5	1,8 - 3,6 kW	1
EC69993	-	1	-	3P+⊕	55	30 - 4x2,5	4,5 - 11,0 kW	1
EC69995	-	-	1	3P+N+⊕	55	30 - 5x2,5	5,0 - 11,0 kW	1

Industrial cable reel plug 1 interlocked socket without fuse holder EN 60309 16A - Ø 400 mm - 50 MT cable

ITEM	INSTALLED SOCKETS			PLUG EN 60309 16A	IP	CABLE MT	POWER kW ROLLED/ EXTENDED CABLE	PACKAGING PIECES
	EN 309 2P+⊕	EN 309 3P+⊕	EN 309 3P+N+⊕					
EC69991L	1	-	-	2P+⊕	55	50 - 3x2,5	1,6 - 3,6 kW	1
EC69993L	-	1	-	3P+⊕	55	50 - 4x2,5	4,0 - 11,0 kW	1
EC69995L	-	-	1	3P+N+⊕	55	50 - 5x2,5	4,0 - 11,0 kW	1

Industrial cable reel plug 1 interlocked socket without fuse holder EN 60309 32A - Ø 400 mm - 30 MT cable

ITEM	INSTALLED SOCKETS			PLUG EN 60309 32A	IP	CABLE MT	POWER kW ROLLED/ EXTENDED CABLE	PACKAGING PIECES
	EN 309 2P+⊕	EN 309 3P+⊕	EN 309 3P+N+⊕					
EC69996	1	-	-	2P+⊕	55	30 - 3x4	2,5 - 5,0 kW	1
EC69997	-	1	-	3P+⊕	55	30 - 4x4	7,0 - 14,0 kW	1
EC69999	-	-	1	3P+N+⊕	55	30 - 5x4	7,0 - 14,0 kW	1



EC69991

INDUSTRIAL EXTENSIONS SERIES 699

MAIN TECHNICAL FEATURES:

- Industrial extensions for mobile connection.
- Rated voltage 230/400V~ - 50Hz - Isolation voltage 500/690V~.
- Cable H07NRF - double insulation HAR.
- Cable complying with the EU standards 64-8V7 for use on construction sites.
- High degree of flexibility even at low temperatures.
- Resistant to wear, abrasion and compression.
- Use extension cords completely extended.

CE
IP44
IP67

Industrial extensions EN 60309 plug and socket 16A - IP44

ITEM	TYPE	SOCKET EN 60309 16A	PLUG EN 60309 16A	IP	CABLE MT	POWER kW EXTENDED CABLE	PACKAGING PIECES
EC699P10		2P+⊕	2P+⊕	44	10 - 3x2,5	3,6 kW	1
EC699P11		3P+⊕	3P+⊕	44	10 - 4x2,5	11,0 kW	1
EC699P12		3P+N+⊕	3P+N+⊕	44	10 - 5x2,5	11,0 kW	1
EC699P13		2P+⊕	2P+⊕	44	20 - 3x2,5	3,6 kW	1
EC699P14		3P+⊕	3P+⊕	44	20 - 4x2,5	11,0 kW	1
EC699P15		3P+N+⊕	3P+N+⊕	44	20 - 5x2,5	11,0 kW	1
EC699P16		2P+⊕	2P+⊕	44	30 - 3x2,5	3,6 kW	1
EC699P17		3P+⊕	3P+⊕	44	30 - 4x2,5	11,0 kW	1
EC699P18		3P+N+⊕	3P+N+⊕	44	30 - 5x2,5	11,0 kW	1

Industrial extensions EN 60309 plug and socket 16A - IP67

ITEM	TYPE	SOCKET EN 60309 16A	PLUG EN 60309 16A	IP	CABLE MT	POWER kW EXTENDED CABLE	PACKAGING PIECES
EC699P20		2P+⊕	2P+⊕	67	10 - 3x2,5	3,6 kW	1
EC699P21		3P+⊕	3P+⊕	67	10 - 4x2,5	11,0 kW	1
EC699P22		3P+N+⊕	3P+N+⊕	67	10 - 5x2,5	11,0 kW	1
EC699P23		2P+⊕	2P+⊕	67	20 - 3x2,5	3,6 kW	1
EC699P24		3P+⊕	3P+⊕	67	20 - 4x2,5	11,0 kW	1
EC699P25		3P+N+⊕	3P+N+⊕	67	20 - 5x2,5	11,0 kW	1
EC699P26		2P+⊕	2P+⊕	67	30 - 3x2,5	3,6 kW	1
EC699P27		3P+⊕	3P+⊕	67	30 - 4x2,5	11,0 kW	1
EC699P28		3P+N+⊕	3P+N+⊕	67	30 - 5x2,5	11,0 kW	1


EC699P10

EC699P21

INDUSTRIAL EXTENSIONS SERIES 699

MAIN TECHNICAL FEATURES:

- Industrial extensions for mobile connection.
- Rated voltage 230/400V~ - 50Hz - Isolation voltage 500/690V~.
- Cable H07NRF - double insulation HAR.
- Cable complying with the EU standards 64-8V7 for use on construction sites.
- High degree of flexibility even at low temperatures.
- Resistant to wear, abrasion and compression.
- Use extension cords completely extended.

CE
IP44
IP67

Industrial extensions EN 60309 plug and socket 32A - IP44

ITEM	TYPE	SOCKET EN 60309 32A	PLUG EN 60309 32A	IP	CABLE MT	POWER kW EXTENDED CABLE	PACKAGING PIECES
EC699P30		2P+⊕	2P+⊕	44	10 - 3x4	7,0 kW	1
EC699P31		3P+⊕	3P+⊕	44	10 - 4x4	21,0 kW	1
EC699P32		3P+N+⊕	3P+N+⊕	44	10 - 5x4	21,0 kW	1
EC699P33		2P+⊕	2P+⊕	44	20 - 3x4	7,0 kW	1
EC699P34		3P+⊕	3P+⊕	44	20 - 4x4	21,0 kW	1
EC699P35		3P+N+⊕	3P+N+⊕	44	20 - 5x4	21,0 kW	1
EC699P36		2P+⊕	2P+⊕	44	30 - 3x4	7,0 kW	1
EC699P37		3P+⊕	3P+⊕	44	30 - 4x4	21,0 kW	1
EC699P38		3P+N+⊕	3P+N+⊕	44	30 - 5x4	21,0 kW	1

Industrial extensions EN 60309 plug and socket 32A - IP67

ITEM	TYPE	SOCKET EN 60309 32A	PLUG EN 60309 32A	IP	CABLE MT	POWER kW EXTENDED CABLE	PACKAGING PIECES
EC699P40		2P+⊕	2P+⊕	67	10 - 3x4	7,0 kW	1
EC699P41		3P+⊕	3P+⊕	67	10 - 4x4	21,0 kW	1
EC699P42		3P+N+⊕	3P+N+⊕	67	10 - 5x4	21,0 kW	1
EC699P43		2P+⊕	2P+⊕	67	20 - 3x4	7,0 kW	1
EC699P44		3P+⊕	3P+⊕	67	20 - 4x4	21,0 kW	1
EC699P45		3P+N+⊕	3P+N+⊕	67	20 - 5x4	21,0 kW	1
EC699P46		2P+⊕	2P+⊕	67	30 - 3x4	7,0 kW	1
EC699P47		3P+⊕	3P+⊕	67	30 - 4x4	21,0 kW	1
EC699P48		3P+N+⊕	3P+N+⊕	67	30 - 5x4	21,0 kW	1



EC699P30



EC699P40