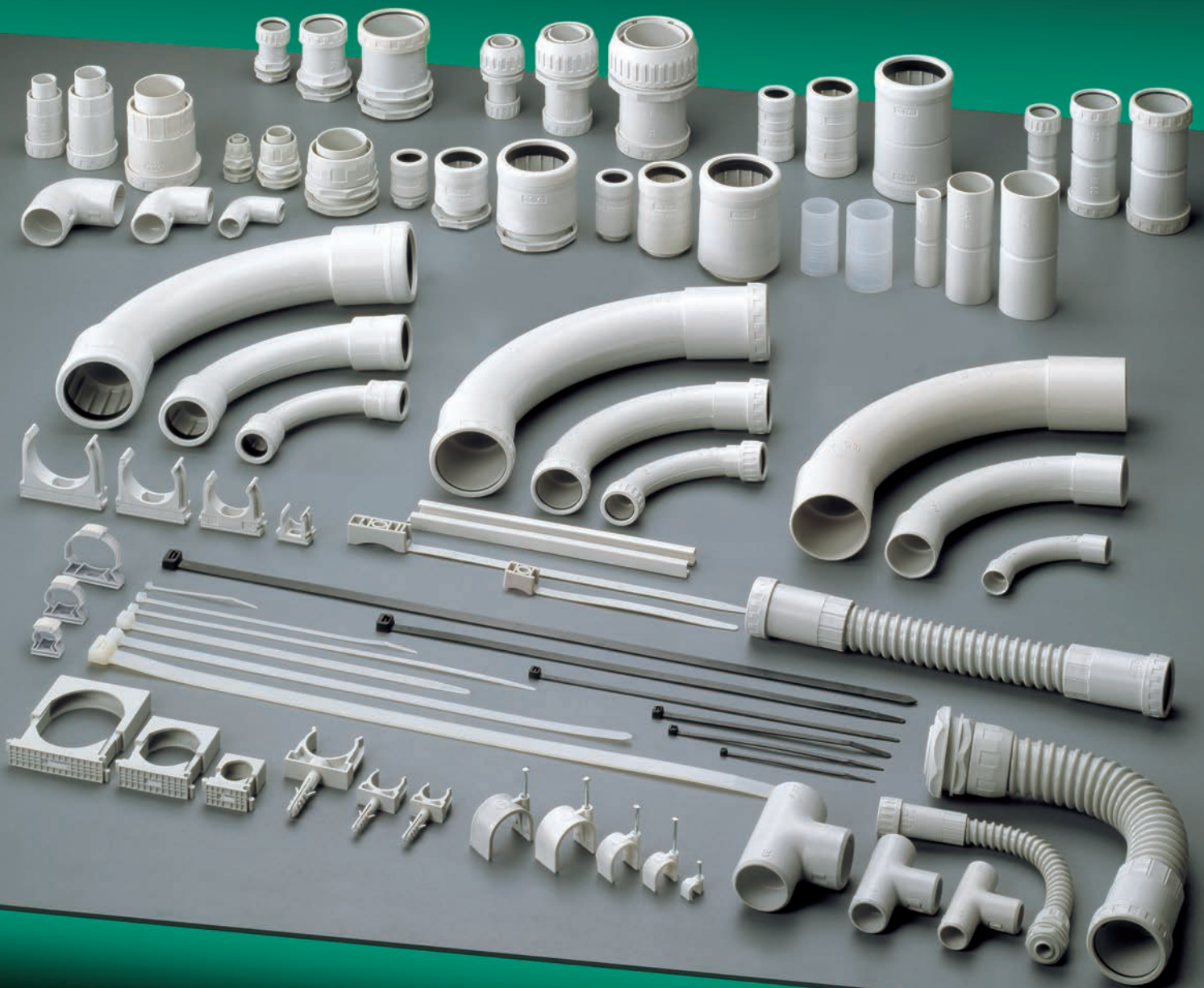


ACCESSORIES AND FIXING SYSTEMS



MAIN TECHNICAL FEATURES

Material: made of a shock resistant technopolymer on rigid PVC base, otherwise PA6.6 polyamide.
 Self-extinguishing V0 according to UL94. (Unless otherwise indicated).
 For outdoor use: high resistance to aging.
 Resistance to abnormal heat: up to 960°C (Glow Wire Test according to IEC 60695-2-11 standard).
 Installation temperature : min. -5°, max +60°.
 Insulation resistance:> 100 MΩ to 500 V ~ for 1 minute.
 Dielectric strength:> 2000 V ~ 50 Hz for 15 minutes.
 Standard colour : Grey RAL7035 or black.
 Reference Standards: EN 61386-1, EN 61386-21-22-23.
 Products meeting the essential requirements of L.V.D. 2014/35/UE.
 Products in compliance with RoHS II - 2011/65/UE directive.

HALOGEN
Free



e@sysystem

IP67 accessories for rigid conduits Series e@sysystem (patented) page 335



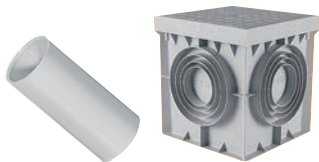
IP65 accessories for rigid conduits Series BS/MS/CS/GS/RS/CXT/CXS page 337



IP40 accessories for rigid conduits Series CRS/CV/GSU/GI/AC/CI/TI page 341



IP40 accessories for halogen free conduits Series CRSH/GSUH/CF page 344



Accessories for corrugated conduits and ground box Series GFLEX/TFLEX/POZ page 345



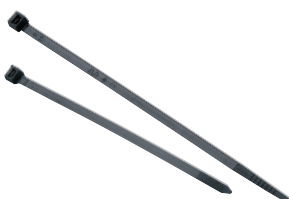
Accessories for flexible spiral conduits Series GX page 346



Fixing systems for pliable rigid and flexible spiral conduits – plugs – clips Series C/G/T page 348



SNylon cable draw tapes Series S3/S4 page 351



Nylon cable ties Series 800/810 page 352

MAIN TECHNICAL FEATURES



The whole range of watertight conduit accessories *e@ssystem* (patented products) has an IP67 protection degree.

The inner gasket has a particular shape permitting the joints to fit perfectly to the conduit, gaining in this was a perfect tightness although the conduit is not completely round.

The joining of the accessories to the conduits is fast and doesn't require any effort.

e@ssystem fittings allow to

recover the conduit expansion in length in response to a temperature variation without compromising the protection degree.

The main characteristics of the *e@ssystem* fittings are their compact design, their reduced dimensions and their sturdiness. In particular the sleeve for the conduit is reinforced throughout all its length so that it embraces and accompanies the conduit during the joining of the conduit.

ELETTROCANALI conduit fittings cover all installation needs: watertight rigid conduit-box joint, couplings, rigid conduit-spiral conduit joints, 90° bends. Combined with our range of junction boxes, modular enclosures and boards, the watertight accessories form a complete system for the conduction, the protection and the distribution.

e@ssystem

WATERTIGHT JOINTS **SERIES e@system**

MAIN TECHNICAL FEATURES:

- Material: shock resistant technopolymer on rigid PVC base.
- Self-extinguishing V0 degree according to UL94 standard
- Resistance to abnormal heat: up to 960°C (Glow Wire Test according to IEC 60695-2-11 standard).
- Rigid conduit-box joints supplied with assembled gaskets and lock nuts.
- O-ring to compensate the conduit tolerances. Metric thread 1,5 mm.
- Made in compliance with the Standards EN 61386-1, EN 61386-21. Patented product system.
- Rigid-flexible spiral conduit joints with holding system of the spiral flexible conduits in the joint.
- Reduced radius of curvature permits to fit the bends properly against the wall.

IP67

GREY RAL 7035

Conduit-box joints to connect a rigid conduit with a junction box

ITEM	CONDUIT DIAMETER mm	LENGTH mm	THREAD LENGTH mm	PACKAGING PIECES
EC70016	16	42	15	25/500
EC70020	20	44	15	25/500
EC70025	25	47	15	25/400
EC70032	32	52	16	25/200
EC70040	40	64	16	10/100
EC70050	50	72	18	10/70

Conduit-conduit joints to connect two rigid conduits with the same diameter

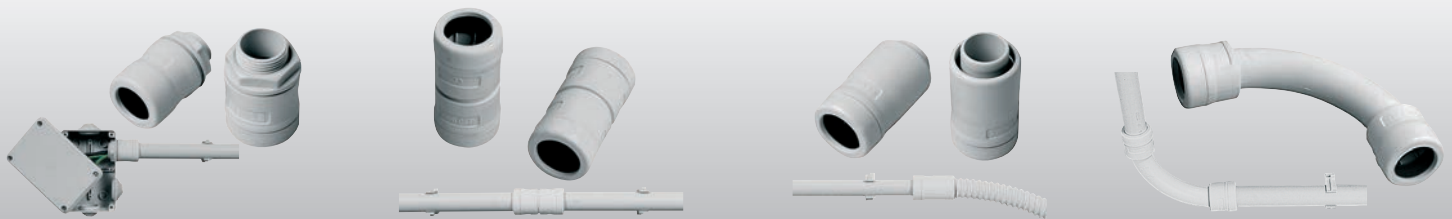
ITEM	CONDUIT DIAMETER mm	LENGTH mm	PACKAGING PIECES
EC71016	16	55	25/500
EC71020	20	59	25/400
EC71025	25	65	25/250
EC71032	32	76	25/150
EC71040	40	94	10/70
EC71050	50	109	10/50

Watertight joints to connect a rigid conduit with a spiral flexible conduit - same diameter

ITEM	CONDUIT DIAMETER mm	LENGTH mm	PACKAGING PIECES
EC72016	16	16	25/500
EC72020	20	20	25/500
EC72025	25	25	25/300
EC72032	32	32	25/200
EC72040	40	40	10/100
EC72050	50	50	10/60

90° bends to connect two rigid conduits with the same diameter

ITEM	CONDUIT DIAMETER mm	RADIUS OF CURVATURE mm	PACKAGING PIECES
EC73016	16	56	25/300
EC73020	20	70	25/200
EC73025	25	88	25/100
EC73032	32	110	10/50
EC73040	40	140	10/30
EC73050	50	175	-/15


Series 700
Series 710
Series 720
Series 730

MAIN TECHNICAL FEATURES



EC conduit fitting system covers all installation needs: watertight rigid conduit-box joint, couplings, 90° bends, rigid conduit-spiral conduit joints to connect two conduits with same or different diameters.

The flexible bends are undoubtedly very interesting, because they permit to join the conduits to junction boxes not

placed on the same level thanks to the possibility of varying the radius of curvature. This solution is particularly useful to avoid an obstacle or changes in levels, for instance pillars or other existing systems, or to get round the thermal expansions of the support structures, that, in rigid systems, may affect the required protection degree.

The reduced dimensions of IP65 fittings permit to use smaller junction boxes or to carry out more connections.

The watertight 3-way derivation box is absolutely necessary to make derivations from the main line and, thanks to the reduction joints, allows to build a really complete system with guaranteed performances.

WATERTIGHTS JOINT SERIES BS / MS / CS

MAIN TECHNICAL FEATURES:

- Material: shock resistant technopolymer on rigid PVC base.
- Self-extinguishing V0 degree according to UL94 standard
- Resistance to abnormal heat: up to 960°C (Glow Wire Test according to IEC 60695-2-11 standard).
- Rigid conduit-box joints supplied with assembled gaskets and lock nuts.
- O-ring to compensate the conduit tolerances.
- Metric thread 1,5 mm.
- Made in compliance with the Standards EN 61386-1, EN 61386-21.
- Reduced radius of curvature permits to fit the bends properly against the wall.

IP65

GREY RAL 7035

Conduit- box joints to connect a rigid conduit with a junction box

ITEM	CONDUIT DIAMETER mm	LENGTH mm	THREAD LENGTH mm	PACKAGING PIECES
ECBS16	16	55	14	10/350
ECBS20	20	55	14	10/350
ECBS25	25	55	14	10/200
ECBS32	32	65	14	10/100
ECBS40	40	75	20	5/80
ECBS50	50	80	20	5/40

Conduit-Conduit joints to connect two rigid conduits with the same diameter

ITEM	CONDUIT DIAMETER mm	LENGTH mm	PACKAGING PIECES
ECMS16	16	80	10/350
ECMS20	20	80	10/200
ECMS25	25	80	10/200
ECMS32	32	100	10/100
ECMS40	40	110	5/80
ECMS50	50	122	5/40

90° bends to connect two rigid conduits with the same diameter

ITEM	CONDUIT DIAMETER mm	RADIUS OF CURVATURE mm	PACKAGING PIECES
ECCS16	16	54	10/200
ECCS20	20	67	10/200
ECCS25	25	85	10/100
ECCS32	32	110	10/50
ECCS40	40	138	5/20
ECCS50	50	172	-/12



Series BS



Series MS



Series CS

RIGID-FLEXIBLE SPIRAL CONDUIT WATERTIGHT SERIES GS / RS

MAIN TECHNICAL FEATURES:

- Material: shock resistant technopolymer on rigid PVC base.
- Self-extinguishing V0 degree according to UL94 standard
- Resistance to abnormal heat: up to 960°C (Glow Wire Test according to IEC 60695-2-11 standard).
- O-ring to compensate the conduit tolerances.
- Made in compliance with the Standards EN 61386-1, EN 61386-21. Patented product system.
- Rigid-flexible spiral conduit joints with holding system of the spiral flexible conduits in the joint.

CE

IP65

GREY RAL 7035

Watertight joints to connect a rigid conduit with a flexible spiral conduit with different diameters

ITEM	CONDUIT DIAMETER mm	FLEXIBLE SPIRAL CONDUIT mm	PACKAGING PIECES
ECGS16	16	12	10/350
ECGS20	20	16	10/350
ECGS25	25	20	10/200
ECGS32	32	25	10/100
ECGS40	40	32	5/100
ECGS50	50	40	5/40

Watertight joints to connect a rigid conduit with a flexible spiral conduit with the same diameter

ITEM	CONDUIT DIAMETER mm	FLEXIBLE SPIRAL CONDUIT mm	PACKAGING PIECES
ECRS16	16	16	10/200
ECRS20	20	20	10/200
ECRS25	25	25	10/160
ECRS32	32	32	10/80
ECRS40	40	40	5/60
ECRS50	50	50	5/40



Series GS



Series RS

WATERTIGHT FLEXIBLE BENDS **SERIES CXT / CXS**

MAIN TECHNICAL FEATURES:

- Material: shock resistant technopolymer on rigid PVC base.
- Self-extinguishing V0 degree according to UL94 standard.
- Compression resistance of the flexible parts: 320 N.
- O-ring to compensate the conduit tolerances.
- Conduit-box joints supplied with assembled lock nuts.
- Thread of the join at the box : GAS thread.
- External corner holes to fix the box on the wall.

CE
IP65

GREY RAL 7035

Flexible bends with variable angle to connect two rigid conduits

ITEM	CONDUIT DIAMETER mm	LENGHT mm	PACKAGING PIECES
ECCXT16	16	220	50/200
ECCXT20	20	230	50/200
ECCXT25	25	240	35/140
ECCXT32	32	270	20/80
ECCXT40	40	300	10/40
ECCXT50	50	340	10/40

Joints to connect a rigid conduit and a box on different levels

ITEM	CONDUIT DIAMETER mm	LENGHT mm	PACKAGING PIECES
ECCXS16	16	200	50/200
ECCXS20	20	210	50/200
ECCXS25	25	230	35/140
ECCXS32	32	250	20/80
ECCXS40	40	280	15/60
ECCXS50	50	320	10/40


Series CXT

Series CXS

MAIN TECHNICAL FEATURES



The accessories with IP40 protection degree can be divided into two groups: the first group composed of single-piece fittings and the second one composed of two-piece fittings, like the inspectionable bends and T-joints.

The reduced radius of curvature of the 90° bends is designed to fit the conduit-joint system

properly against the wall, for a harmonious outlook.

Our offer also includes bending springs, trailing wire probes and accessories for flexible corrugated pipe. The wide and diverse range of hardware systems, as well as ensuring a solid and durable installation, allows you to shorten the installation time resulting in

realization of cost savings.

The offer is completed by the cable ties, UV-resistant and available in 2 different colours, natural or black.

Shortly we can say that the Elettrocantali conduits and fittings form a complete system for the conduction, the protection and the distribution.

BENDS SERIES CRS / CV

MAIN TECHNICAL FEATURES:

- Material: shock resistant technopolymer on rigid PVC base.
- Self-extinguishing V0 degree according to UL94 standard.
- Resistance to abnormal heat (Glow Wire Test according to IEC 60695-2-11 standard): up to 960° C.
- Reduced radius of curvature permits to fit the bends properly against the wall.
- Made in compliance with the Standards EN 61386-1, EN 61386-21.

CE
IP40

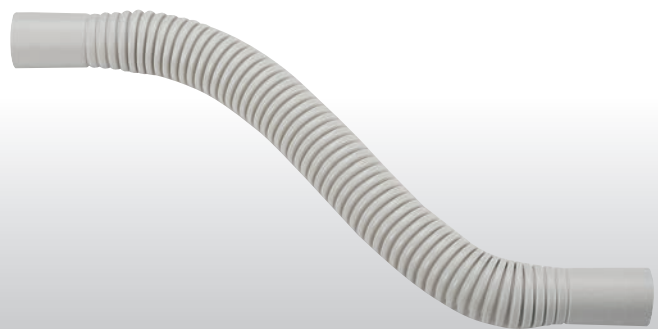
GREY RAL 7035

90° Bends to connect two conduits with the same diameter

ITEM	CONDUIT DIAMETER mm	RADIUS OF CURVATURE mm	PACKAGING PIECES
ECCRS16	16	54	50/1000
ECCRS20	20	67	50/600
ECCRS25	25	85	25/300
ECCRS32	32	110	-/100
ECCRS40	40	138	-/100
ECCRS50	50	172	-/50

IP 44 flexible bends with variable to connect two conduits with the same diameter

ITEM	CONDUIT DIAMETER mm	LENGTH mm	PACKAGING PIECES
ECCV16	16	280	20/300
ECCV20	20	280	20/200
ECCV25	25	340	20/120
ECCV32	32	380	10/80


Series CRS

Series CV

COUPLINGS AND CONDUIT BENDING SPRINGS **SERIES GSU / GI / AC**

MAIN TECHNICAL FEATURES:

- Material: shock resistant technopolymer on rigid PVC base.
- Self-extinguishing V0 degree according to UL94 standard.
- Resistance to abnormal heat (Glow Wire Test according to IEC 60695-2-11 standard): up to 960° C.
- GSU coupling complying with the Standards to EN 61386-1, EN 61836-21.
- GI coupling with conduit holding inner ribs.

CE

IP40 GREY RAL 7035

Couplings to connect two conduits with same diameter

ITEM	CONDUIT DIAMETER mm	LENGTH mm	PACKAGING PIECES
ECGSU16	16	80	100/1200
ECGSU20	20	80	100/800
ECGSU25	25	80	50/500
ECGSU32	32	100	25/250
ECGSU40	40	110	25/150
ECGSU50	50	120	25/100

Smooth joints to connect two conduits with the same diameter

ITEM	CONDUIT DIAMETER mm	LENGTH mm	PACKAGING PIECES
ECGI16	16	50	100/2000
ECGI20	20	55	100/1200
ECGI25	25	60	100/700
ECGI32	32	70	-/400
ECGI40	40	80	-/200
ECGI50	50	90	-/100

Steel springs for cold-bending of the rigid conduits

ITEM	CONDUIT DIAMETER mm	LENGTH cm	PACKAGING PIECES
ECAC16	16	50	-/1
ECAC20	20	50	-/1
ECAC25	25	50	-/1
ECAC32	32	70	-/1



Series GSU



Series GI



Series AC

INSPECTIONABLE BENDS AND T-JOINTS **SERIES CI / TI**

MAIN TECHNICAL FEATURES:

- Material: shock resistant technopolymer on rigid PVC base.
- Self-extinguishing V0 degree according to UL94 standard.
- Resistance to abnormal heat (Glow Wire Test according to IEC 60695-2-11 standard): up to 960° C.
- CI and TI joints: composed of two parts which can be assembled with a single click.

CE
IP40

GREY RAL 7035

Inspectionable 90° bends to connect two conduits with the same diameter

ITEM	CONDUIT DIAMETER mm	PACKAGING PIECES
ECCI16	16	100/400
ECCI20	20	100/300
ECCI25	25	50/200
ECCI32	32	50/150

Inspectionable T-Joint to connect two conduits with the same diameter

ARTICOLO	CONDUIT DIAMETER mm	PACKAGING PIECES
ECTI16	16	100/300
ECTI20	20	50/200
ECTI25	25	25/100
ECTI32	32	25/100


Series CI

Series TI

■ HALOGEN FREE ACCESSORIES AND FITTINGS **SERIES CRSH/GSUH/CF**

MAIN TECHNICAL FEATURES:

- Material: halogen free technopolymer according to the Standard EN 50267-2-1, EN 50267-1-2.
- Resistance to abnormal heat (Glow Wire Test according to IEC 60695-2-11 standard): up to 650° C.
- Reduced radius of curvature permits to fit the bends properly against the wall.
- Snap conduit clips which can be installed alone or in line.
- Made in compliance with the Standards EN 61386-1, EN 61386-21.

CE

IP40

GREY RAL 7035

■ 90° Bend to connect two conduits with the same diameter

ITEM	CONDUIT DIAMETER mm	RADIUS OF CURVATURE mm	PACKAGING PIECES
ECCRS16H	16	54	50/1000
ECCRS20H	20	67	50/600
ECCRS25H	25	85	25/300
ECCRS32H	32	110	-/100
ECCRS40H	40	138	-/100
ECCRS50H	50	172	-/50

■ Couplings to connect two conduits with the same diameter

ITEM	CONDUIT DIAMETER mm	LENGTH mm	PACKAGING PIECES
ECGSU16H	16	80	100/1200
ECGSU20H	20	80	100/800
ECGSU25H	25	80	50/500
ECGSU32H	32	100	25/250
ECGSU40H	40	110	25/150
ECGSU50H	50	120	25/100

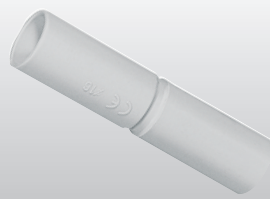
■ Snap conduit clips

ITEM	CONDUIT DIAMETER mm	PACKAGING PIECES
ECCF16	16	100/1500
ECCF20	20	100/1000
ECCF25	25	100/1000
ECCF32	32	50/800
ECCF40	40	50/400
ECCF50	50	25/250

HALOGEN Free



Series CRSH



Series GSU



Series CF16

ACCESSORIES CORRUGATED CONDUITS - GROUND BOXES SERIES GFLEX / TFLEX / POZ.

MAIN TECHNICAL FEATURES:

- Material: Transparent or grey self-extinguishing polyethylene.
- Self-extinguishing V0 degree according to UL94 standard.
- Smooth external surface.
- Conduit holding inner ribs
- Colour code GFLEX: G = Grey.

CE



IP40



Coupling for two pliable conduits with the same diameter

ITEM	CONDUIT DIAMETER mm	LENGTH mm	PACKAGING PIECES
ECGFLEX16	16	50	100/2000
ECGFLEX20	20	55	100/1200
ECGFLEX25	25	55	100/700
ECGFLEX32	32	60	50/400
ECGFLEX40	40	80	-/300
ECGFLEX50	50	90	-/150

Caps to avoid foreign bodies getting inside the corrugated conduits

ITEM	CONDUIT DIAMETER mm	PACKAGING PIECES
ECTFLEX16	16	100/2000
ECTFLEX20	20	100/2000
ECTFLEX25	25	100/1500
ECTFLEX32	32	50/800
ECTFLEX40	40	50/500
ECTFLEX50	50	50/300

Watertight PP ground box with carriageable cover.

ITEM	EXTERNAL DIMENSIONS mm	INTERNAL DIMENSIONS mm	LOAD CARRING CAPACITY kN	PACKAGING PIECES
ECPOZ.25	250x250	220x220	2,10	1

PP ground box with carriageable cover

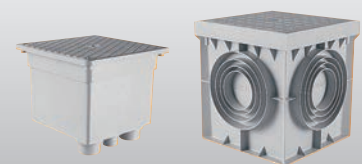
ITEM	EXTERNAL DIMENSIONS mm	INTERNAL DIMENSIONS mm	LOAD CARRING CAPACITY kN	PACKAGING PIECES
ECPOZ.20	200x200	160x160	2,10	1
ECPOZ.30	300x300	250x250	7,39	1
ECPOZ.40	400x400	350x350	9,57	1



Series GFLEX



Series TFLEX



Series POZ.

■ SPIRAL FLEXIBLE CONDUIT-BOX STRAIGHT JOINT **SERIES GX**

MAIN TECHNICAL FEATURES:

- Material: shock resistant technopolymer on rigid PVC base.
- Self-extinguishing V0 degree according to UL94 standard.
- Resistance to abnormal heat (Glow Wire Test according to IEC 60695-2-11 standard): up to 960° C.
- Flexible spiral conduits inlet with self locking thread.
- Rotating upper part; complete with assembled lock nut.

CE

GREY RAL 7035

IP65

BLACK

■ GAS Thread – to connect the spiral flexible conduit with the box

GREY ITEM	BLACK ITEM	SPIRAL CONDUIT DIAMETER mm	THREAD inch	PACKAGING PIECES
ECGX10	ECGX10N	10	1/4'	25/500
ECGX12	ECGX12N	12	3/8'	25/500
ECGX14	ECGX14N	14	1/2'	25/400
ECGX16	ECGX16N	16	1/2'	25/350
ECGX20	ECGX20N	20	3/4'	25/250
ECGX22	ECGX22N	22	3/4'	25/250
ECGX25	ECGX25N	25	1'	10/150
ECGX28	ECGX28N	28	1'	10/120
ECGX32	ECGX32N	32	1'e 1/4	10/90
ECGX35	ECGX35N	35	1'e 1/4	10/70
ECGX40	ECGX40N	40	1'e 1/2	10/60
ECGX50	ECGX50N	50	2'	10/50

■ Metric thread 1,5 mm - to connect the spiral flexible conduit with the box

GREY ITEM	BLACK ITEM	SPIRAL CONDUIT DIAMETER mm	THREAD PITCH	THREAD DIAMETER	PACKAGING PIECES
ECGX10M	ECGX10MN	10	metric 1,5 mm	15 mm	25/500
ECGX12M	ECGX12MN	12	metric 1,5 mm	16 mm	25/500
ECGX16M	ECGX16MN	16	metric 1,5 mm	20 mm	25/350
ECGX20M	ECGX20MN	20	metric 1,5 mm	25 mm	25/250
ECGX25M	ECGX25MN	25	metric 1,5 mm	32 mm	10/150
ECGX32M	ECGX32MN	32	metric 1,5 mm	40 mm	10/90
ECGX40M	ECGX40MN	40	metric 1,5 mm	50 mm	10/60
ECGX50M	ECGX50MN	50	metric 1,5 mm	55 mm	10/50



Series GX



Series GXN

■ SPIRAL FLEXIBLE CONDUIT-BOX STRAIGHT JOINT **SERIES GX**

MAIN TECHNICAL FEATURES:

- Material: shock resistant technopolymer on rigid PVC base.
- Self-extinguishing V0 degree according to UL94 standard.
- Resistance to abnormal heat (Glow Wire Test according to IEC 60695-2-11 standard): up to 960° C.
- Flexible spiral conduits inlet with self locking thread.
- Rotating upper part; complete with assembled lock nut.

GREY RAL 7035

IP65

BLACK

■ PG Thread – to connect the spiral flexible conduit with the box

GREY ITEM	BLACK ITEM	SPIRAL CONDUIT DIAMETER mm	THREAD PITCH	THREAD DIAMETER	PACKAGING PIECES
ECGX10-9	ECGX10-9N	10	PG 9	15 mm	25/500
ECGX12-11	ECGX12-11N	12	PG 11	18,5 mm	25/500
ECGX12-13	ECGX12-13N	12	PG 13,5	20 mm	25/500
ECGX14-13	ECGX14-13N	14	PG 13,5	20 mm	25/400
ECGX16-11	ECGX16-11N	16	PG 11	18,5 mm	25/350
ECGX16-13	ECGX16-13N	16	PG 13,5	20 mm	25/350
ECGX16-16	ECGX16-16N	16	PG 16	22 mm	25/350
ECGX20-21	ECGX20-21N	20	PG 21	28 mm	25/250
ECGX22-21	ECGX22-21N	22	PG 21	28 mm	25/250
ECGX25-29	ECGX25-29N	25	PG 29	37 mm	10/150
ECGX28-29	ECGX28-29N	28	PG 29	37 mm	10/120
ECGX32-36	ECGX32-36N	32	PG 36	47 mm	10/90
ECGX35-36	ECGX35-36N	35	PG 36	47 mm	10/70



Series GX



Series GXN

CONDUIT CLIPS **SERIES C**

MAIN TECHNICAL FEATURES:

- Material: shock resistant technopolymer on ABS base or PA6 - PA6.6 nylon.
- Self-extinguishing V2 degree according to UL94 standard.
- Lateral hooks for installation in a row
- Modular base to be installed on the GC guide.
- Slotted base to facilitate the alignment of the installations.
- Made in compliance with the Standards EN 61386-1 as applicable.

CE

GREY RAL 7035

Halogen free snap conduit clips

ITEM	CONDUIT DIAMETER mm	PACKAGING PIECES
ECCF16	16	100/1500
ECCF20	20	100/1000
ECCF25	25	100/1000
ECCF32	32	50/800
ECCF40	40	50/400
ECCF50	50	25/250

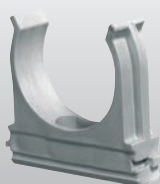
Adjustable collar clips with quick closing collar - **new model**



ITEM	CONDUIT DIAMETER mm	PACKAGING PIECES
ECCFC16	16	100/1000
ECCFC20	20	100/1000
ECCFC25	25	100/800
ECCFC32	32	50/500
ECCFC40	40	50/400
ECCFC50	50	25/250

Modular and extensible PVC fixing guide for CF and CFC series

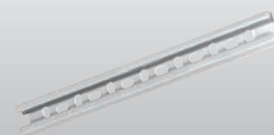
ITEM	LENGTH mm	PACKAGING PIECES
ECGC	200	-/400



Series CF



Series CFC



Series GC

CONDUIT CLIPS SERIES C

MAIN TECHNICAL FEATURES:

- Material: shock resistant technopolymer on rigid PVC base or PA6 - PA6.6 nylon.
- Self-extinguishing V0/V2 degree according to UL94 standard.
- Base with small holes in order to line up the conduits.
- Embedded plug with fixing flaps.
- Made in compliance with the Standards EN 61386-1 as applicable.
- Tensile strength of the CFF tie equal to 100N.

CE

GREY RAL 7035

Conduit clips with plug and steel screw

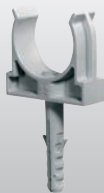
ITEM	CONDUIT DIAMETER mm	PLUG DIAMETER mm	PACKAGING PIECES
ECCT16	16	6	100/1000
ECCT20	20	6	100/1000
ECCT25	25	6	100/800
ECCT32	32	8	50/400

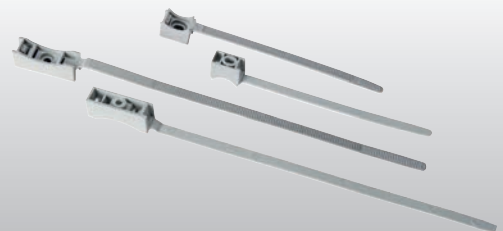
Clamp conduit clips - multidiameter

ITEM	MIN. CONDUIT DIAMETER mm	MAX. CONDUIT DIAMETER mm	PACKAGING PIECES
ECC12	12	20	100/1400
ECC16	14	22	100/1000
ECC25	23	35	50/500
ECC50	38	50	50/250

Tie conduit clips

ITEM	MIN. CONDUIT DIAMETER mm	MAX. CONDUIT DIAMETER mm	PACKAGING PIECES
ECCFF1	16	32	100/1400
ECCFF2	32	63	50/700


Series CT

Series C

Series CFF

ROUND CLIPS AND PLUGS SERIES TC / GT / GP

MAIN TECHNICAL FEATURES ROUND CLIPS:

- Material: BP polyethylene. HB self-extinguishing according to the Standard UL94.
- Incorporated galvanized steel nail.
- Available in white or grey.
- Made in compliance with the Standards EN 61386-1 as applicable.



MAIN TECHNICAL FEATURES PLUGS:

- Material: PA6 - PA6.6 Nylon. HB self-extinguishing according to the Standard UL94
- Plugs with fixing flaps.
- Supplied With self-tapping screws.



Round clips with assembled steel nail

WHITE ITEM	GREY ITEM	CONDUIT OR CABLE DIAMETER mm	PIECES FOR BAG NR.	BAGS FOR PACKAGING	PACKAGING PIECES
ECGT4BW50	ECGT4GW50	3 - 4	50	400	20000
ECGT6BW50	ECGT6GW50	5 - 6	50	240	12000
ECGT7BW50	ECGT7GW50	6 - 7	50	240	12000
ECGT8BW50	ECGT8GW50	7 - 8	50	200	10000
ECGT10BW50	ECGT10GW50	9 - 10	50	120	6000
ECGT13BW50	ECGT13GW50	13 - 14	50	140	7000
ECGT16BW50	ECGT16GW50	15 - 16	50	80	4000
ECGT19BW50	ECGT19GW50	19 - 20	50	60	3000
ECGT25BW50	ECGT25GW50	25 - 26	50	32	1600

Plugs with screws

ITEM	PLUG DIMENSION mm	SCREW DIMENSION mm	PACKAGING PIECES
ECTC5	5	3x30	100/6000
ECTC6	6	4x35	100/5000
ECTC8	8	5x40	100/3000
ECTC10	10	6x45	100/1500



Series GT



Series TC

■ NYLON CABLE DRAW TAPES **SERIES S3 / S4**

MAIN TECHNICAL FEATURES:

- Material: nylon with high flexibility and traction resistance.
- Tip with steel spring.
- Brass eyelet for cable hooking.
- Single package with plastic film.



■ Ø 3 mm nylon cable draw tape

ITEM	LENGHT m	PACKAGING PIECES
ECS3-05	5	340
ECS3-10	10	180
ECS3-15	15	120
ECS3-20	20	90
ECS3-25	25	70
ECS3-30	30	60

■ Ø 4 mm nylon cable draw tape

ITEM	LENGHT m	PACKAGING PIECES
ECS4-05	5	200
ECS4-10	10	100
ECS4-15	15	60
ECS4-20	20	50
ECS4-25	25	40
ECS4-30	30	36



PA6.6 NYLON CABLE TIES SERIES 800

MAIN TECHNICAL FEATURES:

- Material: PA6.6 nylon.
- Self-extinguishing V2 degree t according to the Standard UL94.
- Installation temperature: from -40° C to +85° C.
- High resistance to mineral oils and grease.
- Product complying with UL Standard.
- Reference Standard : EN 62275.

CE



NATURAL

Natural PA6.6 nylon cable ties

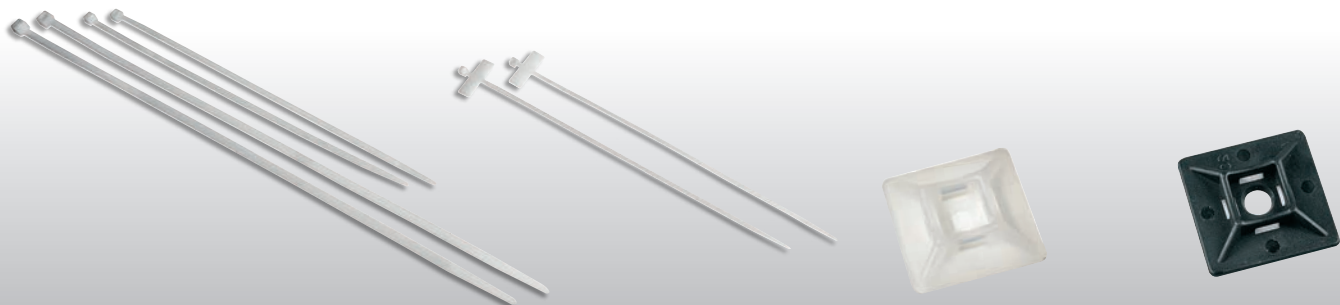
ITEM	DIMENSIONS mm	MAX BUNDLE DIAMETER mm	MINIMUM RESISTANCE TO STRESS Kg	PACKAGING PIECES
EC8008024	80x2,4	15	8,0	100/5000
EC8001025	100x2,5	22	8,1	100/5000
EC8001225	120x2,5	33	8,1	100/5000
EC8001625	160x2,5	38	8,1	100/5000
EC8002025	200x2,5	53	8,1	100/5000
EC8001436	140x3,6	33	18,2	100/5000
EC8002036	200x3,6	53	18,2	100/5000
EC8002936	290x3,6	76	18,2	100/5000
EC8001648	160x4,8	38	22,2	100/5000
EC8002048	200x4,8	50	22,2	100/5000
EC8002548	250x4,8	60	22,2	100/5000
EC8002948	290x4,8	76	22,2	100/4000
EC8003648	360x4,8	102	22,2	100/3000
EC8004348	430x4,8	110	22,2	100/3000
EC8002976	290x7,6	76	54,4	100/2000
EC8003676	360x7,6	102	54,4	100/2000
EC8004390	430x9,0	110	79,4	100/1000
EC8005390	530x9,0	140	79,4	100/1000

Natural cable ties for label

ITEM	DIMENSIONS mm	MAX BUNDLE DIAMETER mm	MINIMUM RESISTANCE TO STRESS Kg	PACKAGING PIECES
EC8701025	100x2,5	18	8,1	100/5000
EC8702025	200x2,5	50	8,1	100/5000

Natural or black 2-way adhesive base

ITEM NATURAL	ITEM BLACK	DIMENSIONS mm	MAX TIE WIDTH mm	PACKAGING PIECES
EC83036	EC84036	19x19	3,6	100/5000
EC83048	EC84048	27x27	4,8	100/5000



PA6.6 NYLON CABLE TIES SERIES 810

MAIN TECHNICAL FEATURES:

- Material: PA6.6 black nylon.
- Self-extinguishing V2 degree t according to the Standard UL94.
- Installation temperature: from -40° C to +85° C.
- High resistance to mineral oils and grease.
- Product complying with UL Standard.
- Reference Standard : EN 62275.

BLACK

Black PA 6.6 nylon cable ties

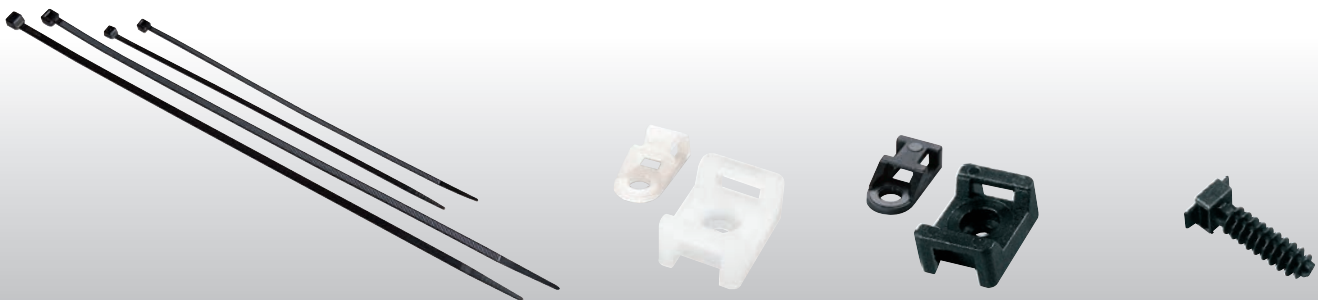
ITEM	DIMENSIONS mm	MAX BUNDLE DIAMETER mm	MINIMUM RESISTANCE TO STRESS Kg	PACKAGING PIECES
EC8108024	80x2,4	15	8,0	100/5000
EC8101025	100x2,5	22	8,1	100/5000
EC8101225	120x2,5	33	8,1	100/5000
EC8101625	160x2,5	38	8,1	100/5000
EC8102025	200x2,5	53	8,1	100/5000
EC8101436	140x3,6	33	18,2	100/5000
EC8102036	200x3,6	53	18,2	100/5000
EC8102936	290x3,6	76	18,2	100/5000
EC8101648	160x4,8	38	22,2	100/5000
EC8102048	200x4,8	50	22,2	100/5000
EC8102548	250x4,8	60	22,2	100/5000
EC8102948	290x4,8	76	22,2	100/4000
EC8103648	360x4,8	102	22,2	100/3000
EC8104348	430x4,8	110	22,2	100/3000
EC8102976	290x7,6	76	54,4	100/2000
EC8103676	360x7,6	102	54,4	100/2000
EC8104390	430x9,0	110	79,4	100/1000
EC8105390	530x9,0	140	79,4	100/1000

Natural or black screw fixable supports

ITEM NATURAL	ITEM BLACK	DIMENSIONS mm	MAX TIE WIDTH mm	PACKAGING PIECES
EC85048	EC86048	15x9,5	4,8	100/5000
EC85090	EC86090	22x16	9,0	100/5000

Plug for cable ties

ITEM	PLUG DIMENSION mm	MAX RESISTANCE TO STRESS Kg	PACKAGING PIECES
EC88085	8	50	100/5000



CHOICE TABLE FOR SPIRAL FLEXIBLE CONDUITS AND FITTINGS

MODEL	DESCRIPTION	SPIRAL CONDUIT INTERNAL DIAMETER													
		Ø 8	Ø 10	Ø 12	Ø 14	Ø 16	Ø 20	Ø 22	Ø 25	Ø 28	Ø 32	Ø 35	Ø 40	Ø 50	Ø 60
	SPIRAL FLEXIBLE CONDUIT	ECGFE8	ECGFE10	ECGFE12	ECGFE14	ECGFE16	ECGFE20	ECGFE22	ECGFE25	ECGFE28	ECGFE32	ECGFE35	ECGFE40	ECGFE50	ECGFE60
	BOX STRAIGHT JOINT GAS THREAD	-	ECGX10	ECGX12	ECGX14	ECGX16	ECGX20	ECGX22	ECGX25	ECGX28	ECGX32	ECGX35	ECGX40	ECGX50	-
	BOX STRAIGHT JOINT PG THREAD	-	ECGX10/9	ECGX12/11 ECGX12/13	ECGX14/13	ECGX16/11 ECGX16/13 ECGX16/16	ECGX20/21	ECGX22/21	ECGX25/29	ECGX28/29	ECGX32/36	ECGX35/36	-	-	-
	BOX STRAIGHT JOINT MET. THREAD	-	-	ECGX12M	-	ECGX16M	ECGX20M	-	ECGX25M	-	ECGX32M	ECGX35M	ECGX40M	ECGX50M	-

CHOICE TABLE FOR FIXING SYSTEMS



DIAMETER CONDUIT mm	ITEM					
	SNAP CONDUIT CLIPS	COLLAR CONDUIT CLIPS	FIXING GUIDE	CONDUIT CLIPS WITH PLUG	CLAMP CONDUIT CLIPS Ø CONDUIT MIN. - MAX	TIE CLIPS Ø CONDUIT MIN. - MAX
16	ECCF16	ECCFC16	ECGC	ECCT16	ECC12 12 - 20	ECCFF1 16 - 32
20	ECCF20	ECCFC20	ECGC	ECCT20	ECC16 14 - 22	ECCFF1 16 - 32
25	ECCF25	ECCFC25	ECGC	ECCT25	ECC25 23 - 35	ECCFF1 16 - 32
32	ECCF32	ECCFC32	ECGC	ECCT32	ECC25 23 - 35	ECCFF1 16 - 32
40	ECCF40	ECCFC40	ECGC	-	ECC50 38 - 50	ECCFF2 32 - 63
50	ECCF50	ECCFC50	ECGC	-	ECC50 38 - 50	ECCFF2 32 - 63

CHOICE TABLE FOR RIGID CONDUIT ACCESSORIES
IP67

patented system

CONDUIT DIAMETER mm								
ITEM	CONDUIT BOX JOINT	COUPLING	RIGID-FLEXIBLE CONDUIT	90° BEND	CONDUIT BOX JOINT	COUPLING	RIGID-FLEXIBLE CONDUIT	90° BEND
16	EC74116	EC74016	EC74216	EC74316	EC70016	EC71016	EC72016	EC73016
20	EC74120	EC74020	EC74220	EC74320	EC70020	EC71020	EC72020	EC73020
25	EC74125	EC74025	EC74225	EC74325	EC70025	EC71025	EC72025	EC73025
32	EC74132	EC74032	EC74232	EC74332	EC70032	EC71032	EC72032	EC73032
40	EC74140	EC74040	EC74240	EC74340	EC70040	EC71040	EC72040	EC73040
50	EC74150	EC74050	EC74250	EC74350	EC70050	EC71050	EC72050	EC73050

IP65

CONDUIT DIAMETER mm								
ITEM	CONDUIT BOX JOINT	COUPLING	RIGID-FLEXIBLE CONDUIT	RIGID-FLEXIBLE =CONDUIT	90° BEND	CONDUIT CONDUIT FLEXIBLE BEND	CONDUIT BOX FLEXIBLE BEND	
16	ECBS16	ECMS16	ECGS16 (12 mm)	ECRS16	ECCS16	ECCXT16	ECCXS16	
20	ECBS20	ECMS20	ECGS20 (16 mm)	ECRS20	ECCS20	ECCXT20	ECCXS20	
25	ECBS25	ECMS25	ECGS25 (20 mm)	ECRS25	ECCS25	ECCXT25	ECCXS25	
32	ECBS32	ECMS32	ECGS32 (25 mm)	ECRS32	ECCS32	ECCXT32	ECCXS32	
40	ECBS40	ECMS40	ECGS40 (32 mm)	ECRS40	ECCS40	ECCXT40	ECCXS40	
50	ECBS50	ECMS50	ECGS50 (40 mm)	ECRS50	ECCS50	ECCXT50	ECCXS50	

IP40

CONDUIT DIAMETER mm								
ITEM	90° BEND	FLEXIBLE BEND	INSPECTIONABLE 90° BEND	INSPECTIONABLE T-JOINT	COUPLING	SMOOTH JOINT	CONDUIT BENDING STEEL SPRING	
16	ECCRS16	ECCV16	ECCI16	ECTI16	ECGSU16	ECGI16	ECAC16	
20	ECCRS20	ECCV20	ECCI20	ECTI20	ECGSU20	ECGI20	ECAC20	
25	ECCRS25	ECCV25	ECCI25	ECTI25	ECGSU25	ECGI25	ECAC25	
32	ECCRS32	ECCV32	ECCI32	ECTI32	ECGSU32	ECGI32	ECAC32	
40	ECCRS40				ECGSU40	ECGI40		
50	ECCRS50				ECGSU50	ECGI50		